

Cross section area: 112 mm²
Size in mm

Description

- Aluminum mounting profile for flexible LED tape IP
- Flexible LED tape with a width of up to 12 mm and a thickness of 6 mm
- Use in combination with different lenses is possible
- Aluminum, anodized natural
- Mounting unit for plastic cover
- Installation with Fixing Plates
- Compact cross-section [17,9 x 16,2 mm]
- Can be expanded with extensive accessories [optional]

Applications

- Long lengths of profiles where it is difficult to joint IP tape and maintain the protection
- Standard length 5,10 m. Other lengths available upon request

Accessories

- Wide variety of lenses and covers with a selection of end caps and mounting clips to fit every need and application

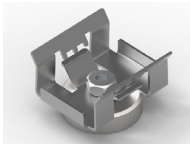
→ page 2 & 3

Type	Article Code	LxWxH (mm)	Weight kg / m
Z23 - Welight Mounting profile Al for LEDtape IP6x	W8465	5100 x 17,9 x 16,2 mm ①	0,302 kg

① Length tolerance ±1mm

ACCESSORIES - Mounting Clips

PLATE METAL 0° MAGNETIC



- Mounting holder with 0° angle & magnet
- Material: Metal

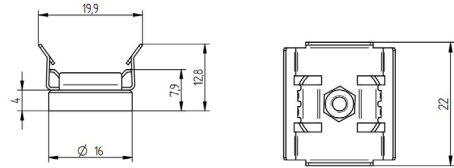


PLATE METAL 0°



- Mounting holder with 0° angle
- Material: Metal
- Assembly: By means of self-tapping sheet metal screws

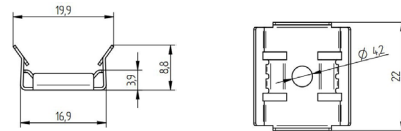
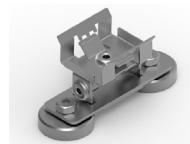


PLATE METAL ADJUSTABLE MAGNETIC



- Magnetic mounting plate
- Material: Metal
- Angle adjustable from -60° to +60°

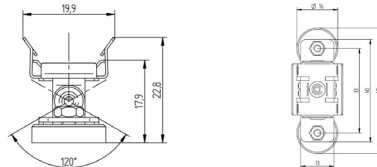
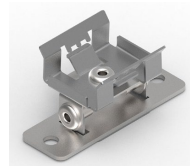
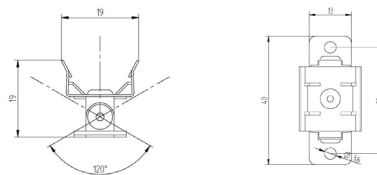


PLATE METAL ADJUSTABLE



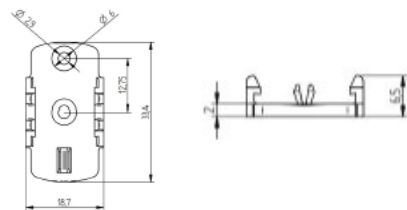
- Mounting plate
- Material: Metal
- Angle adjustable from -60° to +60°



MOUNTING BRACKET 0°



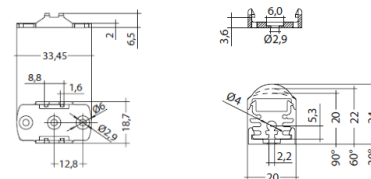
- Mounting plate with 0° angle
- Material: PBT
- With studs to prevent sliding in the longitudinal direction



MOUNTING BRACKET 15°



- Mounting plate with 15° angle
- Also available in 30°, 45°, 60°
- Material: PBT
- With studs to prevent sliding in the longitudinal direction



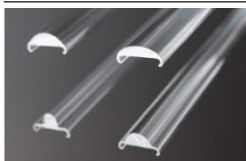
Type	Article Code	LxWxH (mm)	Weight
LED Magnetic Plate Metal 0°	88167382	22 x 19,9 x 12,8	0,009 kg
LED Fixing Plate Metal 0°	88167376	22 x 19,9 x 8,8	0,002 kg
LED Magnetic Plate Metal - adjustable	88167385	49 x 19,9 x 22,8	0,024 kg
LED Fixing Plate Metal - adjustable	88167384	40 x 19 x 19	0,010 kg
LED Z161 Fixing Plate ECS 0°	88166859	33,4 x 18,7 x 6,5	0,002 kg
LED Fixing Plate ECS 15°	88167372	35 x 20,8 x 11,2	0,002 kg

Ambient temperature

- In installed condition: -30 ... +80 °C
- During assembly of the luminaire or profile: +10 ... +30 °C

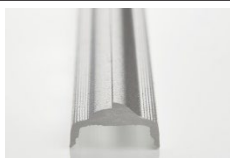
ACCESSORIES - Lenses and End caps

O200-2 LINEAR LENS



- Linear lens for Profile
- Beam angle 15° (frosted only), 30°, 60°, 90°
- Material: PMMA
- Semi-transparent
- Uniform distribution of light
- No tools required for installing, Slide-on mounting

O200-2 ASYMMETRIC



- Linear lens for Profile
- Beam angle 30° asymmetric
- Material: PMMA
- UV-resistant
- Semi-transparent
- Uniform distribution of light
- No tools required for installing, Slide-on mounting

O200-2 SIDE EMITTING



- Linear lens for Profile
- Beam angle 30° asymmetric, Batwing
- Material: PMMA
- UV-resistant
- Semi-transparent
- Uniform distribution of light
- No tools required for installing, Snap-on mounting

COVER

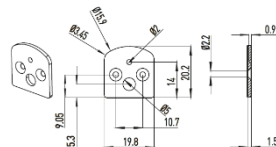


- Plastic cover for Profile
- Beam angle 30° asymmetric, Batwing
- Material: PMMA
- UV-resistant
- Colour: Diffuse, White
- Radiation: 120°
- No tools required for installing, Snap-on mounting

LED END CAP Z22W



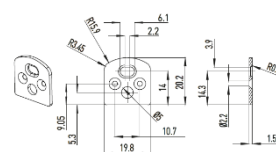
- End Caps for Profile
- Material: Aluminium



LED END CAP Z22W WITH CABLE ENTRY



- End Caps for Profile
- Material: Aluminium



Type	Article Code	Lenght (mm)	Weight
LED O200-2 Linear Lens NB 15° frosted	24166405	2000 ①	0,18 kg
LED O200-2 linear lens 15°/30° frosted	24166409	2000 ①	0,18 kg
LED O200-2 linear lens 30°/60° frosted	24166410	2000 ①	0,20 kg
LED O200-2 linear lens 60°/90° frosted	24166411	2000 ①	0,17 kg
LED O200 linear lens 30° asymmetric frosted	24166412	2020 ①	0,17 kg
LED O200-2 linear lens side-emitting frosted (8%)	24166123	2000 ①	0,20 kg
LED Z221 Cover Frosted	24138743	2000 ①	0,17 kg
LED Z220 Cover white	24138742	2000 ①	0,17 kg

Type	Article Code	LxWxH (mm)	Weight
LED End Cap Z22W	24139174	19,8 x 1,5 x 20,2	0,002 kg
LED End Cap Z22W cable entry	24139173	19,8 x 1,5 x 20,2	0,002 kg

Ambient temperature

Lenses:

- Operating temperature: -30 ... +80 °C
- Storage temperature ts: -30 ... +80 °C

End caps:

- In installed condition: -30 ... +80 °C
- During assembly of the luminaire or profile: +10 ... +30 °C

① Length tolerance – 0 mm / + 20 mm