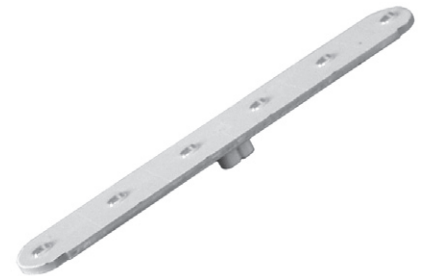
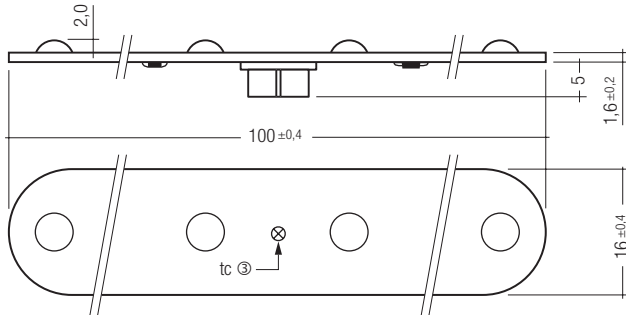


TALEXspaceLED P602 – 6 COB module

RoHS



Applications:

- TALEX module chain system for highlighting lines and edges and for backlighting letters and symbols
- backlighting of complex contours
- optimised for use in illuminated advertising (lettering, surface)
- edge lighting of transparent or diffuse materials
- suitable for use with TALEXprofile Z202 / 203

Highlights:

- patented TALEXspaceLED contact system, IP 54
- high reliability and safety
- flexibility
- no tools required for installing
- simple replacement of TALEXspaceLED modules

Properties:

- high-power LED in COB technology
- dimmable by pulse width modulation (PWM)
- colour temperature white: ④
warm white (WW): 3,000 K
neutral white (NW): 4,200 K
daylight white (DL): 6,500 K
- integrated current source to stabilise luminous flux
- broad 140° light distribution for uniform illumination

Notes:

- reversing the polarity may damage the TALEXspaceLED!
- none of the components of the TALEXspaceLED (substrate, LED, electronic components etc.) may be exposed to tensile or compressive stresses
- for further information on installation please refer to the brochure entitled "TALEX installation instructions"

TALEX

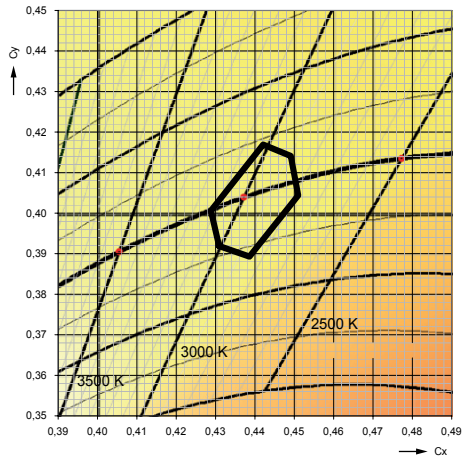
type	article number	colour	wavelength colour temp.	light points per module	typ. luminous flux lm ①	voltage V _{dc} ②	power W ①	ta °C	tc point °C ③	dimensions mm	packing unit
P602 R	89600104	red	624–630 nm	6	12.9	8	1.0	-25 → +55	75	100 x 16	50
P602 A	89600105	amber	586–592 nm	6	9.9	8	1.0	-25 → +55	75	100 x 16	50
P602 G	89600106	green	520–540 nm	6	17.3	12	1.0	-25 → +55	75	100 x 16	50
P602 B	89600107	blue	460–465 nm	6	3.3	12	1.0	-25 → +55	75	100 x 16	50
P602 WW	89600239	warm white	3,000 K	6	14.2	12	1.0	-25 → +55	75	100 x 16	50
P602 NW	89600108	neutral white	4,200 K	6	19.0	12	1.0	-25 → +55	75	100 x 16	50
P602 DL	89600110	daylight white	6,500 K	6	21.4	12	1.0	-25 → +55	75	100 x 16	50

all values at ta = 25 °C

- ① Tolerance range for optical and electrical data: ±15 %
- ② Exceeding the maximum operating voltage leads to an overload on the TALEXspaceLED module. This may in turn result in a significant reduction in lifetime or even destruction of the TALEXspaceLED. Tolerance range for the supply voltage: 8V: +2V/-0V; 12V: +2V/-0V
- ③ If the maximum temperature limits are exceeded, the life of the module will be greatly reduced or the module may be damaged. The temperature of the TALEXspaceLED at the tc point in the thermally stable state by means of a temperature sensor or temperature-sensitive sticker (available for example from www.conrad.com, www.rs-components.com) as per EN60598-1. For the precise position of the tc point see the above diagram.
- ④ For colour temperatures and tolerances see page 2.

TALEXspaceLED P602 – 6 COB module

Corresponding colour temperature and CIE coordinates 3,000 K

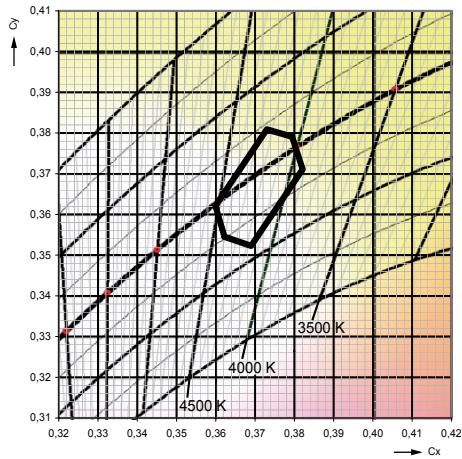


CIE coordinates: tolerance area

warm white, 3,000 K

	Cx	Cy
tolerance area	0.4309	0.3919
	0.4288	0.4006
	0.4421	0.4169
	0.4491	0.4141
	0.4510	0.4044
	0.4386	0.3893

Corresponding colour temperature and CIE coordinates 4,200 K

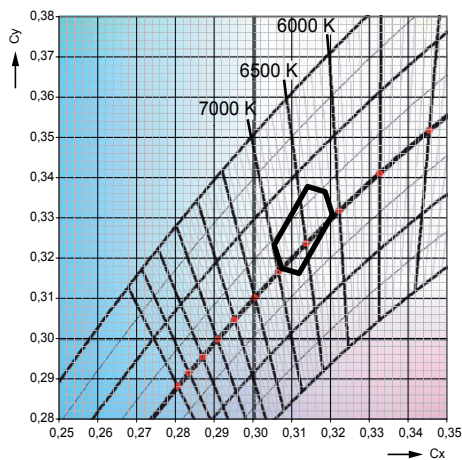


CIE coordinates: tolerance area

neutral white, 4,200 K

	Cx	Cy
tolerance area	0.3622	0.3545
	0.3599	0.3621
	0.3730	0.3809
	0.3794	0.3791
	0.3821	0.3711
	0.3690	0.3523

Corresponding colour temperature and CIE coordinates 6,500 K



CIE coordinates: tolerance area

daylight white, 6,500 K

	Cx	Cy
tolerance area	0.3074	0.3175
	0.3055	0.3233
	0.3141	0.3378
	0.3186	0.3365
	0.3205	0.3308
	0.3119	0.3162