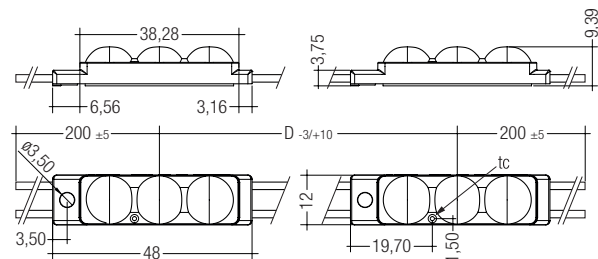


IP68       

TALEXchain CRYSTAL CLASSIC E G1
TALEXchain CRYSTAL

Product description

- LED chain for highlighting lines and edges and for backlighting complex contours, letters and symbols in signage applications
 - Optimised for use in signage (lettering, surface backlighting)
 - High colour consistency (MacAdam 5)
 - Beam characteristic: 155°
 - LED module with plastic casing and strain relief with IP68 protection
 - Integrated current source to stabilise luminous flux
 - Flexible chain, can be split between any module
 - Mounting with screw or premounted double-sided adhesive tape possible
 - Nominal life-time up to 50,000 h
(at t_a 60 °C with a failure rate ≤ 0.2 % per 1,000 h)
- For product data sheet go to www.tridonic.com, or available on request



Technical data

Ambient temperature t_a	-40 ... +60 °C
Max. surface temperature on module t_c ①	65 °C
Storage temperature t_s	-40 ... +85 °C
Type of protection ②	IP68
Risk group (EN 62471:2008)	0



For standards see data sheet

For colour temperatures and tolerances see data sheet

Ordering data

Type	Article number	Colour	Wavelength range	Colour temperature ③	Pack-aging, roll	Pack-aging, carton	Pack-aging, pallet
3 light points per module							
LED P541E-C CW 12 200 100 68 B G1 X	28000716	Crystal white	-	7,500 K	1 pc(s).	30 pc(s).	180 pc(s).
LED P541E-C DL 12 100 100 68 B G1	28000361	Daylight white	-	6,500 K	1 pc(s).	30 pc(s).	180 pc(s).
LED P541E-C DL 12 150 100 68 B G1	28000362	Daylight white	-	6,500 K	1 pc(s).	30 pc(s).	180 pc(s).
LED P541E-C DL 12 150 100 68 B G1 X	28000363	Daylight white	-	6,500 K	1 pc(s).	30 pc(s).	180 pc(s).
LED P541E-C DL 12 200 100 68 B G1 X	28000364	Daylight white	-	6,500 K	1 pc(s).	30 pc(s).	180 pc(s).
LED P541E-C R 12 150 100 68 B G1	28000468	Red	620 – 630 nm	-	1 pc(s).	30 pc(s).	180 pc(s).
LED P541E-C G 12 150 100 68 B G1	28000471	Green	520 – 537 nm	-	1 pc(s).	30 pc(s).	180 pc(s).
LED P541E-C B 12 150 100 68 B G1	28000472	Blue	465 – 470 nm	-	1 pc(s).	30 pc(s).	180 pc(s).
LED P541E-C O 12 150 100 68 B G1	28000469	Orange	600 – 609 nm	-	1 pc(s).	30 pc(s).	180 pc(s).
LED P541E-C A 12 150 100 68 B G1	28000470	Amber	583 – 592 nm	-	1 pc(s).	30 pc(s).	180 pc(s).

Specific technical data

Type	Photometric code ④ ⑤	Wavelength range	Colour temperature ③	Typ. luminous flux per module ④	Colour rendering index CRI ④	Supply voltage DC ⑥	Typ. current per module ④	Typ. power per module	Luminous efficacy
3 light points per module									
LED P541E-C CW	775/5xx	-	7,500 K	31 lm	> 63	12 V	28 mA	0.34 W	92 lm/W
LED P541E-C CW ... X	775/5xx	-	7,500 K	45 lm	> 63	12 V	42 mA	0.50 W	88 lm/W
LED P541E-C DL	765/5xx	-	6,500 K	31 lm	> 70	12 V	28 mA	0.34 W	92 lm/W
LED P541E-C DL ... X	765/5xx	-	6,500 K	45 lm	> 70	12 V	42 mA	0.50 W	88 lm/W
LED P541E-C R	-	620 – 630 nm	-	12 lm	-	12 V	45 mA	0.54 W	22 lm/W
LED P541E-C G	-	520 – 537 nm	-	35 lm	-	12 V	37 mA	0.44 W	79 lm/W
LED P541E-C B	-	465 – 470 nm	-	11 lm	-	12 V	54 mA	0.65 W	17 lm/W
LED P541E-C O	-	600 – 609 nm	-	16 lm	-	12 V	37 mA	0.44 W	36 lm/W
LED P541E-C A	-	583 – 592 nm	-	12 lm	-	12 V	37 mA	0.44 W	27 lm/W

① If the max. temperature limits are exceeded, the life of the module will be greatly reduced or the module may be damaged. For the precise position of the t_c point see the above diagram.
 ② Maximum submerge depth 1 m / 60 min.
 ③ Colour temperature for information only. Valid colour see data sheet.
 ④ Tolerance range for optical and electrical data: ± 15 % (optical data for red and blue: ± 15 / -30 %).
 ⑤ Photometric code in evaluation.
 ⑥ Exceeding the max. operating voltage leads to an overload on the TALEXchain. This may in turn result in a significant reduction in life-time or even in destruction. Tolerance range for the supply voltage: 12 V: ± 2 V / -0 V.