

IP 20 

TALEXengine IMAGE
TALEXengine IMAGE

Product description

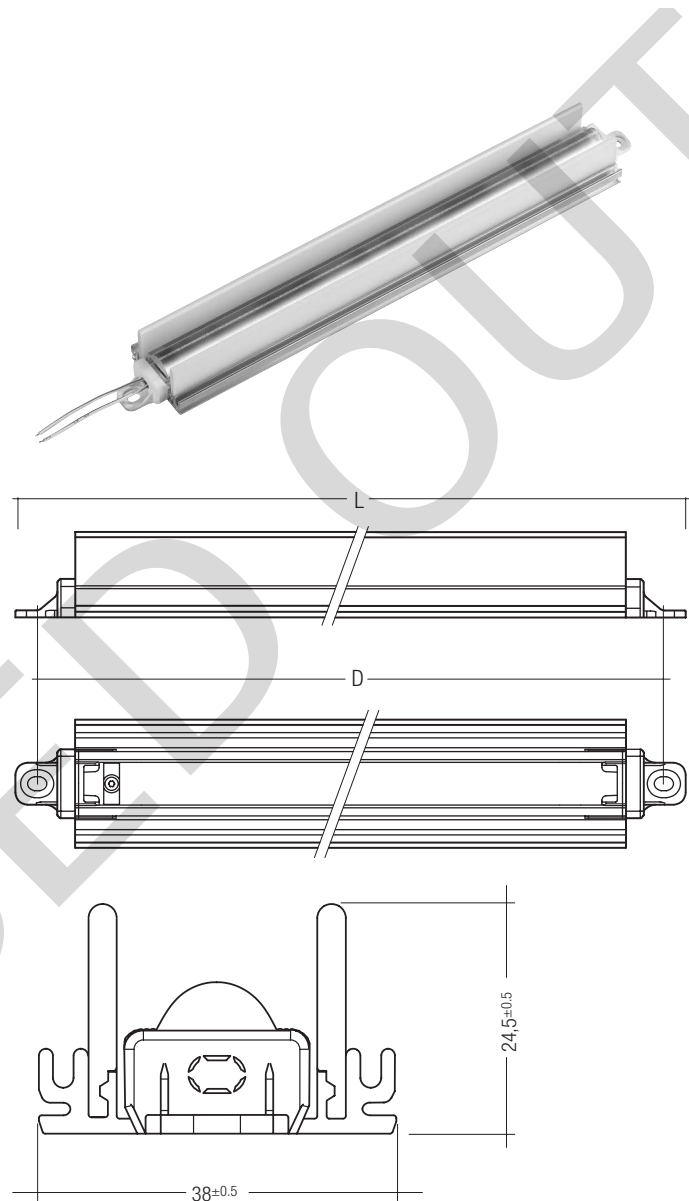
- Complete solution with standard cable
- High efficiency thanks to directional lighting and integrated heat removal
- High quality of light thanks to a combination of COB LEDs and optics
- Safety extra low voltage (SELV)
- Simple installation
- Connection: Cable 55 mm
- Cooling section made of anodised, extruded aluminium
- End caps made of PBT
- Linear lenses made of PMMA
- Safety extra low voltage (SELV), protection class III

Technical data

Supply current DC	700 mA
Ambient temperature t_a	-25 ... +45 °C
Max. surface temperature on profile	65 °C
Type of protection	IP20
Protection class	III



Colour temperatures and tolerances, page 3



Ordering data

Length L	Colour	Type	Article number
1,075 mm	Daylight white	LB1075 12P211-3 DL 700 mA FROSTED 30°	89600927
445 mm	Daylight white	LB445 5P211-3 DL 700 mA FROSTED 30°	89600945
265 mm	Daylight white	LB265 3P211-3 DL 700 mA FROSTED 30°	89600946

Packaging 1,075 mm length: 224 pieces/carton, 3,136 pieces/pallet

Packaging 445 mm length: 152 pieces/carton, 2,128 pieces/pallet

Packaging 265 mm length: 12 pieces/carton, 240 pieces/pallet

Specific technical data

Type	Hole spacing D	Beam angle	Typ. luminous flux ^①	Power ^②
LED LB1075 12P211-3 DL 700 mA FROSTED 30°	1,063 mm	30°	1,200 lm	29.4 W
LED LB445 5P211-3 DL 700 mA FROSTED 30°	432 mm	30°	500 lm	12.3 W
LED LB265 3P211-3 DL 700 mA FROSTED 30°	253 mm	30°	300 lm	7.4 W

^① Tolerance range for optical data: ±15 %.

^② Tolerance range for electrical data: ±15 %.

All values at $t_a = 25$ °C.

Converter matrix – TALEXengine IMAGE

Type	REMOTE LCI			IN-BUILT LCI			
	LCAI 030/0700 A120	LCI 015/0700 E020	LCI 030/0700 E020	LCI 033/0700 U010			
Article number	86458901	24166313	24166314	25000669			
Assignable converter					Assignable converter		
Type	Article number	Number of engines				Number of engines	
		Min.	Max.	Min.	Max.	Min.	Max.
LED LB1075 12P211-3 DL 700 mA FROSTED 30°	89600927	1	1			1	1
LED LB445 5P211-3 DL 700 mA FROSTED 30°	89600945	1	2	1	1	2	2
LED LB265 3P211-3 DL 700 mA FROSTED 30°	89600946	1	3	1	1	3	4

Electrical characteristics:

- Supply current: 700 mA
- AWG24 11 x 0.16, length 55mm
- Identification of polarity: + red / – black

Note:

- There is no provision for chaining multiple TALEXengine IMAGE units
- The converter must be switched off before connecting the TALEXengine IMAGE. This can damage the TALEXengine IMAGE!

Electrical supply/choice of converter:

TALEXengine IMAGE modules from Tridonic are not protected against overvoltages, overcurrents, overloads or short-circuit currents. Safe and reliable operation can only be guaranteed in conjunction with a converter which complies with the relevant standards. The use of TALEX converters from Tridonic in combination with TALEXengine IMAGE guarantees the necessary protection for safe and reliable operation.

TALEXengine IMAGE must be supplied by a constant current converter. Operation with a constant voltage converter will lead to an irreversible damage. The TALEXengine IMAGE is equipped with reverse voltage protection up to 50 V.

If a converter other than Tridonic TALEXconverter is used, it must provide the following protection:

- Short-circuit protection
- Overload protection
- Overtemperature protection

Thermal behaviour

operation temperature (operation, no defects)	ta	- 25 → + 45 °C
storage temperature	ts	- 25 → + 60 °C
max. temperature cooling profile ①②	t _{profile}	- 25 → + 65 °C

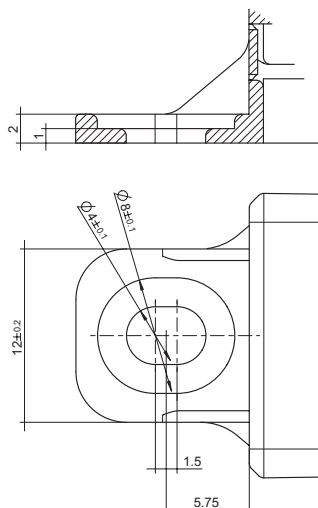
① The values apply to operation at 100% output, natural convection

② If the maximum temperature limits are exceeded, the life of the module will be greatly reduced or the module may be destroyed.

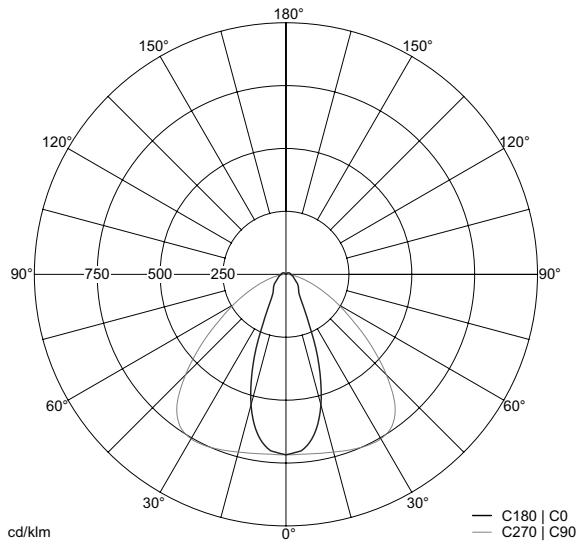
The tc point temperature on the profile of TALEXengine IMAGE should be measured in the thermally stable state and under operating conditions by means of a temperature sensor or temperature-sensitive sticker (available for example from www.conrad.com, www.rs-components.com) as per EN60598-1. The entire profile can be used as the tc point.

Installation of TALEXengine IMAGE

- Mount with end caps. Screws ST3.9 and ST3.5 (according to EN ISO 15481) can be used for the slot hole.
- The converter must be switched off before connecting the TALEXengine IMAGE. This can damage the TALEXengine IMAGE!



Luminous intensity distribution TALEXengine IMAGE:



Coordinates and tolerances according to CIE 1964

CIE coordinates:

daylight white

	x0	y0
Centre	0.3200	0.3270

MacAdam Ellipse: 5SDCM

daylight white

