

Overview

Product / function matrix Page 387

Product information

luxCONTROL lighting control systems Page 388

DALI sensors

Multi-sensor for DALI system

DALI MSensor 02 Page 390

IR SMART Controller Page 391

DALI RC Page 391

DALI control units

Control module with switch input

DALI GC / DALI GC-A Page 392

DALI SC / DALI SC-A Page 393

DALI MC Page 394

Operating and control units

DALI TOUCHPANEL 02 Page 395

x/e-touchPANEL 02 Page 396

Sequencer module for DALI systems

DALI SQM Page 397

DALI power supply

DALI PS Page 398

DALI PS2 Page 399

DALI PS2 standby Page 400

DALI PS1 Page 401

DALI interface

PC interface module for DALI systems

DALI USB Page 402

Converter for DALI signals

DALI DSI Page 403

DALI DSI II Page 404

DALI Repeater Page 405

Control module for Somfy motor control unit

DALI Somfy animeo interface Page 406

proDIM

Cluster Controller	Page 407
proDIM XC	Page 408

DALI actuator**DALI control module for 3 relays**

DALI 3-RM-C	Page 409
DALI RM/S 4 x 10 A	Page 410

**Leading-edge and trailing-edge phase dimmers
with automatic load detection**

DALI PCD 300 one4all	Page 411
DALI PCD/S	Page 412

SMART sensors**Ambient light sensor and presence detector for constant lighting control**

SMART Sensor 5D 19f	Page 413
SMART Sensor 5DP 19f	Page 416
SMART Sensor 5DPI 19f	Page 419
SMART Sensor 10DPI 19f	Page 422

basicDIM**Ambient light sensor and motion detector for constant lighting control**

basicDIM RCL	Page 425
basicDIM RCL DBC	Page 428
DSI SMART PTM	Page 431
smartDIM SM Ip	Page 433

DSI control units**Modular lighting control for 3 DSI channels**

modularDIM Basic	Page 436
modularDIM SC (accessory for Basic)	Page 437
modularDIM DM (accessory for Basic)	Page 438
modularDIM LC (accessory for Basic)	Page 439

Control module with input for infra-red receiver and one-way switch

DSI-IR	Page 440
DSI-2IR	Page 441

Control module for amplifying DSI signals and switch input

DSI-V/T	Page 443
---------	----------

Automatic switching depending on presence and light value

Smart SWITCH II	Page 444
-----------------	----------

DSI interface

Converter for 1...10 V to DSI signals

DSI-A/D Page 445

DSI-A/DS Page 446

Converter for KNX- and LON- to DSI signals

KNX DSI/S 6CH Page 447

LON DSI/S 6CH Page 448

DSI actuator

Leading-edge and trailing-edge phase dimmers 40-1,000 VA with preset

DSI-PCD/S Page 449

Relay module for switching ohmic loads

DSI-RK Page 450

Wiring diagrams and installation examples Page 451

Product / function matrix

				Manual dimming	Presets / scenes	Motion detection	Daylight control / ambient light control	Remote control	Tunable white	Automatic scene control (sequence)	Time-controlled daily processes (scheduler)	Type of mounting: built-in	Type of mounting: surface-mount	Switching contact	SMART interface
System	Category	Type	Page												
DALI	DALI sensors	DALI MSensor 02	Page 390		•	•	•	•				•	•		
	DALI control modules	DALI GC/GC-A	Page 392	•								•			
		DALI SC/SC-A	Page 393		•							•			
		DALI MC	Page 394	•	•					•		•			
		DALI TOUCHPANEL 02	Page 395	•	•					•			•		
		DALI x/e-touchPANEL 02	Page 396	•	•					•	•	•	•		
		DALI SQM	Page 397							•		•			
SMART		SMART Sensor	Page 413			•	•	•			•			•	
basicDIM		basicDIM RCL	Page 425	•		•	•					•			
		basicDIM RCL DBC	Page 428	•		•	•					•			
		DSI-SMART PTM	Page 431	•		•	•					•	•		
		smartDIM SM Ip	Page 433	•		•	•					•		•	
		modularDIM	Page 436	•	•	•	•					•			
		DSI-V/T	Page 443	•	•							•	•		
		DSI-A/D	Page 445	•			•					•			
Sensor		Smart SWITCH II	Page 444			•					•		•		

luxCONTROL lighting control systems

Intelligent lighting control

The right light in the right amount at the right place – this saves energy and creates an individual level of lighting comfort that promotes a feeling of well-being. luxCONTROL components from Tridonic provide the basis for innovative and tailor-made lighting solutions in which maximum energy efficiency is combined with optimum functionality for the specific application. luxCONTROL represents the next generation of lighting management for modern lighting systems with daylight-dependent control, spectacular lighting moods and impressive colour chases.

Intelligent luxCONTROL systems are characterised by the optimum interplay of controller, sensors, controls, electronic ballasts and lamps. They are perfectly tailored to work with digital dimmable PCA EXCEL one4all, PCA ECO and PCA BASIC ballasts, TE one4all electronic transformers, digital PCI FOX ballasts, TALEX converters for LED modules and EM PRO emergency lighting units.

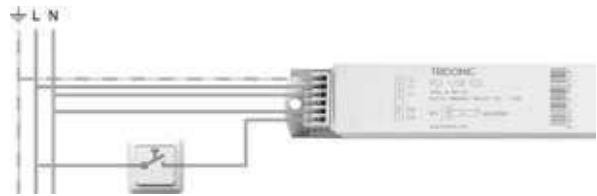
Task-specific lighting management

With luxCONTROL all the lighting tasks are performed with the versions that are ecologically, economically and functionally the most attractive. Integrated solutions enable manufacturers to produce cost-effective energy-saving luminaires. Lighting planners and installers can use the right configuration based on an extensive range of equipment to suit the specific task and the required lighting design.

Tried and tested DSI technology (Digital Serial Interface) and the DALI interface protocol (Digital Addressable Lighting Interface) offer impressive flexibility – from individual intelligent luminaires and large room installations to lighting concepts for buildings that can even be linked to emergency lighting systems to provide a total package.

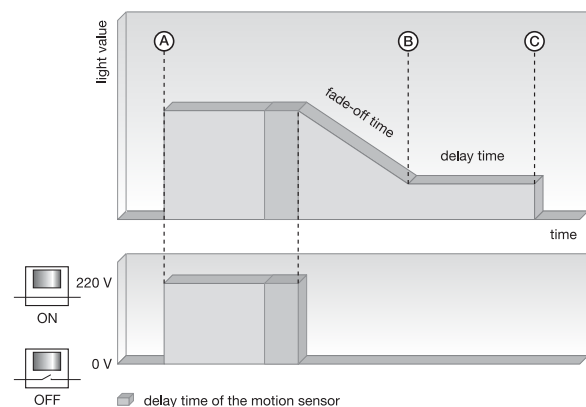
Ballasts from Tridonic: the simplest form of lighting management

switchDIM applications use the mains voltage as the control signal for the digital dimmable ballasts from Tridonic. This is the simplest form of lighting management, which makes switchDIM uncomplicated, cost-effective and extremely user-friendly. Only simple conventional mains voltage switches are therefore needed to dim and switch the lighting system from several locations. For more information go to page 73.



Safe passage with integrated corridorFUNCTION

In presence-controlled lighting systems the corridorFUNCTION integrated in dimmable ballasts from Tridonic provides a new level of energy efficiency, safety and comfort. Instead of being switched-off abruptly if no movement is detected in stairwells, corridors, underground car parks or entrance halls, the lighting is dimmed to a low level and then switched-off after a delay of one minute. As soon as someone enters the room the light is switched back up to its full level.



corridorFUNCTION – huge benefits in terms of energy efficiency, safety and comfort. Within a user-definable time window (fade-off time) the lighting is dimmed to a low level (B) and switched-off after a certain dwell time (C). Alternatively the lighting can remain at this low background level.

SMART sensors – elements of a cost-effective constant lighting solution

Simple, cost-effective and energy-efficient constant lighting systems can be produced on the basis of digital dimmable PCA EXCEL one4all, PCA ECO and PCA BASIC, ballasts. SMART sensors, which are connected to the ballasts via the Tridonic SMART Interface, register the available ambient light or the presence of a person in the room. The level of light can be regulated to a user-defined constant light value or the luminaire can be switched-off if there is no-one in the room.

The compact components are easy to integrate, enabling luminaire manufacturers to offer products with added intelligence without having to compromise on the freedom of optimum design. Further control inputs on the ballast enable the luminaires to be integrated in a complete lighting system.

DSI – simply functional

To optimise the energy consumption of extensive groups of luminaires, for example in sports stadiums or factories, there are solutions based on the modularDIM system and the DSI digital interface. The attractive functions of a DSI lighting management system include simple programming of scenes and the option of common routing of the control line and mains power supply cabling in one duct. Digital transmission means no problems of interference and an identical dimming value for all the luminaires.

DALI – the established standard

DALI enables up to 64 digital dimmable ballasts with one4all interfaces to be individually addressed on a single line, 16 groups to be assigned and 16 lighting scenes to be programmed. Regrouping is possible at any time without the need for costly rewiring, for example after renovation or a change of function for a room.

With individual addressability and status feedback, the DALI-based comfortDIM lighting control systems not only offer top-quality monitoring functions but

also open up new opportunities for developing high-quality lighting solutions because the various parameters can be easily programmed. With comfortDIM it is also possible for external systems such as louvre blind controllers to be integrated in the overall concept.

Other functions that have been implemented by Tridonic in ballasts with one4all interfaces and that go beyond the DALI standard contribute to greater lighting comfort and even greater energy savings.

Networked solutions

The proDIM light management solution based on the Cluster Controller combines standardised DALI technology with the tried and tested TCP/IP internet protocol. This means that the lighting control system can be fully integrated in a building management system so everything can be controlled centrally with just one system.

Intelligent emergency lighting system

Compact emergency lighting systems for up to 120 individually addressable DALI emergency lighting units are easily implemented with e-touch. The status report for the emergency lighting system can be retrieved locally via an infra-red interface or in a networked installation with EM LINK software (available free of charge) via a standard web browser (TCP/IP).

Technical information

The latest technical information is available on the internet at: www.tridonic.com, menu “Technical data”, submenu “Data sheets”

Personal enquiries

A form for personal enquiries is available on the internet at www.tridonic.com, menu “Contact”, submenu “Contact form”



NEW

DALI MSensor 02
Multi-sensor for DALI system

Product description

- Component of the comfortDIM system (DALI standalone)
 - With ambient light dependent control and presence detection
 - Simple group assignment via rotary switch
 - Multiple MSensors possible in a group
 - Can be remote controlled
 - Lighting control and presence detection can be deactivated
 - Individual adjustment of the parameters with configuration software
 - Multi-master compatible: Multiple control modules are possible in a DALI system
 - Power supply via DALI line
- For product data sheet go to www.tridonic.com, or available on request

Technical data

Supply via	DALI cable
Current draw	6 mA from DALI
Operating temperature	0 ... +50 °C
Storage temperature	-25 ... +55 °C
Type of protection	IP20



Product matrix, page 387

Wiring diagrams and installation examples, page 451



Fig. 1

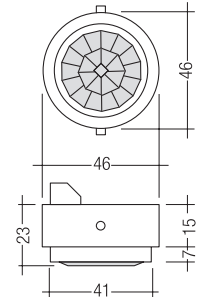


Fig. 2

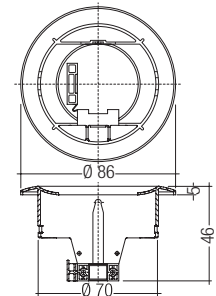


Fig. 3

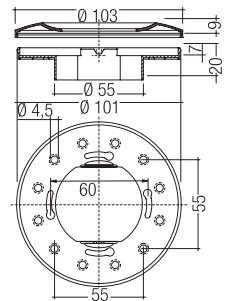
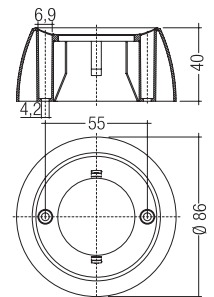


Fig. 4



Ordering data

Type	Article number	Figure	Packaging, carton
DALI MSensor 02 5DPI 41f Luminaire installation	86459305	1	1 piece
DALI MSensor 02 5DPI 41rc Ceiling installation	86459303	2	1 piece
DALI MSensor 02 5DPI 41w Box installation	86459304	3	1 piece
DALI MSensor 02 5DPI 41rs Surface mounting	86459302	4	1 piece

Specific technical data

Type	Detection						
	Ø of detection range, mounted at a height of 2.5 m	Extension of the detection area ^①	Swivel design	Swivel range	Detection angle	Light measurement at the sensor head ^②	Infra-red control range
DALI MSensor 02 5DPI 41f	5 m	–	no	0°	360°	10 – 650 lx	5 m
DALI MSensor 02 5DPI 41rc	5 m	2 m	yes	±15°	360°	10 – 650 lx	5 m
DALI MSensor 02 5DPI 41w	5 m	2 m	yes	±15°	360°	10 – 650 lx	5 m
DALI MSensor 02 5DPI 41rs	5 m	–	no	0°	360°	10 – 650 lx	5 m

^① If mounted at a height of 2.5 m and swivelled through 15 °.

^② The measured value at the sensor head corresponds to approx. 15 to 2,000 lux on the surface measured.

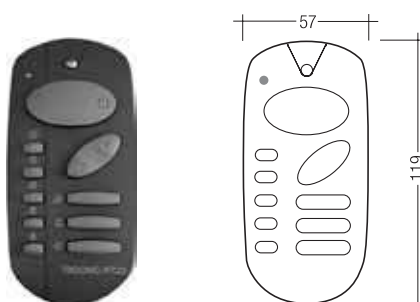
RoHS

ACCES-
SORIES

DALI RC

Product description

- Optional infra-red remote control
- Switching on and off (On/Off button)
- Dimming (Up/Down button)
- Activating automatic lighting control (sun/cloud button)
- Calling up two scenes
- Calling up five fixed light output values (100, 50, 25, 12 and 6 %)
- Individual adjustment of the button assignments with configuration software
- Setting the threshold control point
- With wall bracket



Ordering data

Type	Article number	Packaging, carton
DALI-RC	86458263	1 piece

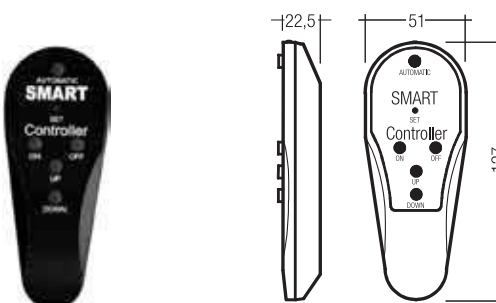
RoHS

ACCES-
SORIES

IR SMART Controller

Product description

- Optional infra-red remote control
- Switching on and off (On/Off button)
- Dimming (Up/Down button)
- Activation of automatic lighting control (Automatic button)
- Setting the threshold control point (Set button)



Ordering data

Type	Article number	Packaging, carton
DSI-SMART Controller	86451922	1 piece



DALI GC / DALI GC-A

Control module for 2 DALI groups

Product description

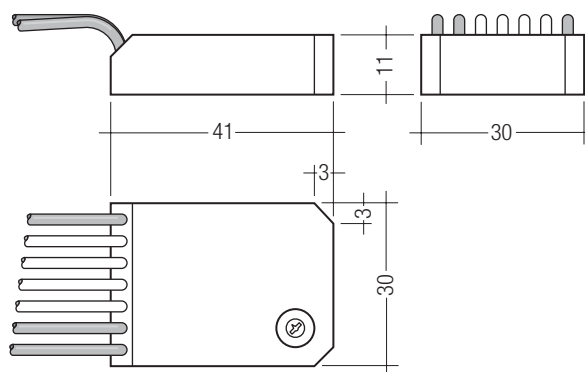
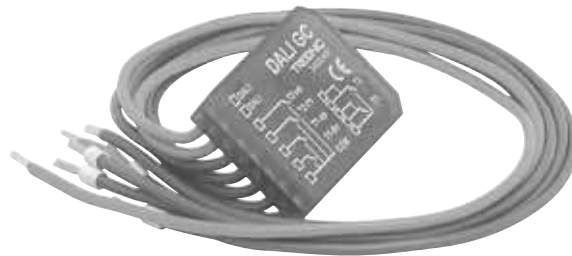
- Control module for standard momentary-action switch
- For sending dimming and switching commands to two DALI groups
- 2 momentary-action switch inputs
- DALI GC only: DALI devices can be addressed and assigned by means of a simple key sequence
- Rotary switch for selecting groups 1 – 16 or “broadcast”
- Multi-master compatible: Multiple control modules are possible in a DALI system
- Power supply via DALI line

Note

- Wires to momentary-action switches must not be extended
- For product data sheet go to www.tridonic.com, or available on request

Technical data

Supply via	DALI cable
Current draw	6 mA from DALI
Input, 2 momentary-action switches	1-way / 2-way
Output	DALI
Ambient temperature t_a	0 ... +50 °C
Type of protection	IP20



Ordering data

Type	Article number	Packaging, carton
DALI GC	24033450	1 piece
DALI GC-A	24138907	1 piece



Product matrix, page 387

Wiring diagrams and installation examples, page 451



DALI SC / DALI SC-A

Control module for 4 DALI lighting scenes

Product description

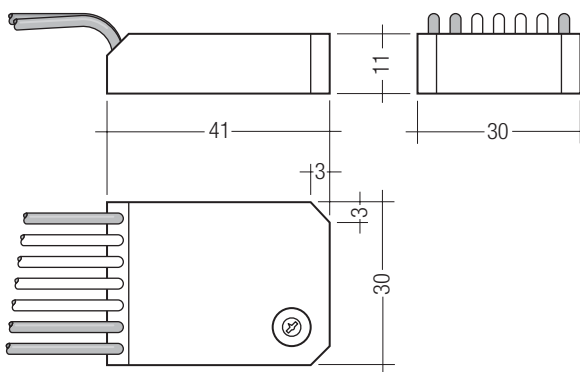
- Control module for standard momentary-action switch
- For calling up lighting scene values in DALI devices
- 4 momentary-action switch inputs
- DALI SC only: Lighting scene values in DALI devices can be programmed by means of a simple key sequence
- Rotary switch for selecting 4 DALI scenes 1 – 16
- Multi-master compatible: Multiple control modules are possible in a DALI system
- Power supply via DALI line

Note

- Wires to momentary-action switches must not be extended
- For product data sheet go to www.tridonic.com, or available on request

Technical data

Supply via	DALI cable
Current draw	6 mA from DALI
Input, 4 momentary-action switches	single
Output	DALI
Ambient temperature t_a	0 ... +50 °C
Type of protection	IP20



Ordering data

Type	Article number	Packaging, carton
DALI SC	24034263	1 piece
DALI SC-A	24138906	1 piece



Product matrix, page 387

Wiring diagrams and installation examples, page 451



DALI MC

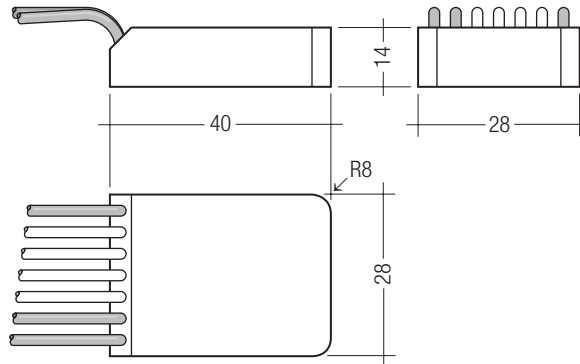
Control module with 4 freely programmable inputs

Product description

- Control module with 4 inputs
 - User-definable switching modes
 - Each input can be individually set
 - Objective: Setting individual addresses 1 – 64, groups 1 – 16 or “broadcast”
 - Multi-master compatible: Multiple control modules are possible in a DALI system
 - Sequencer for 4 scenes
 - Stairwell function with 2 dimming levels
 - Power-up function for sending a preset command after a delay
 - Power supply via DALI line
- For product data sheet go to www.tridonic.com, or available on request

Technical data

Supply via	DALI cable
Current draw	6 mA from DALI
Input	4 momentary-action switches or relays
Output	DALI
Ambient temperature t_a	0 ... +50 °C
Type of protection	IP20



Product matrix, page 387

Wiring diagrams and installation examples, page 451

Ordering data

Type	Article number	Packaging, carton
DALI MC	86458507	1 piece

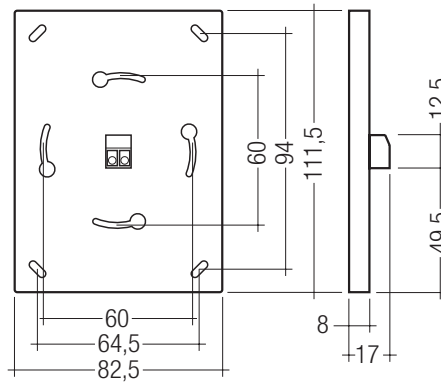


NEW

DALI TOUCHPANEL 02
Operating and control unit

Product description

- Control panels and controllers for DALI systems
 - For controlling multiple luminaire groups and calling up preset lighting scenes
 - Flexible design: individual design can be used
 - Multi-master compatible: Multiple control modules are possible in a DALI system
 - Power supply via DALI line
 - Individual adjustment of the control panel and button assignments with configuration software
 - Setting group addresses 1 – 16 or “broadcast”
 - Setting scene addresses 1 – 16
 - Tunable white (device type 8) capable
- For product data sheet go to www.tridonic.com, or available on request



Technical data

Supply via	DALI cable
Current draw	6 mA (max. 10 mA im service mode)
Output	DALI
Ambient temperature ta	0 ... +50 °C
Protection class	IP20



Product matrix, page 387

Wiring diagrams and installation examples, page 451

Ordering data

Type	Article number	Packaging, carton
DALI TOUCHPANEL 02 white	28000022	1 piece



NEW

DALI x/e-touchPANEL 02
Operating and control unit

Product description

DALI control system with 3 choosable modes:

- Light management
- Emergency lighting

Properties

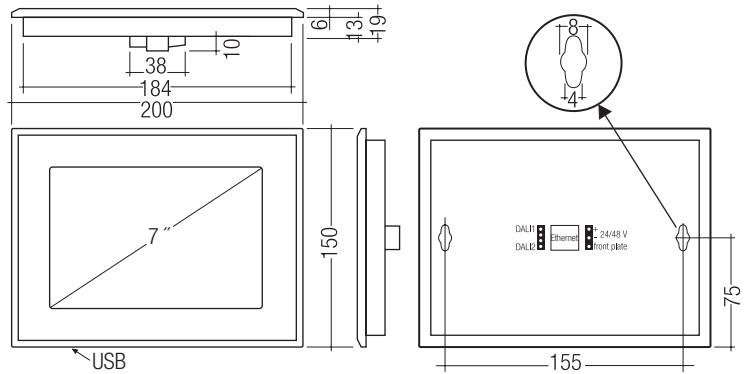
Light management:

- Lighting management system with up to 128 DALI ECGs
- Start-up, control and operating unit
- Colour touch screen (7")
- Background lighting with RGB LEDs
- Manual dimming and switching
- Manual scene recall or timed scene recall with a maximum of 99 sequences
- Tunable white (colour converter) control
- Weekday-controlled sequence programming (schedule)
- User-defined labelling of scenes, groups, sequences and schedules
- Optimised mode for RGB coloured light management
- Operation via a web browser (Ethernet)

→ For product data sheet go to www.tridonic.com, or available on request

Technical data

Rated supply voltage mains adapter	230 – 240 V
Mains frequency mains adapter	50 / 60 Hz
Rated supply voltage DALI x/e-touchPANEL 02	24 – 48 V DC
Power	10 W
Number of DALI circuits	2
Current consumption of each DALI line	2 mA
Ambient temperature t_a	0 ... +50 °C
Touchscreen size	7"
Touchscreen pixel	800 x 480
Colours	64K
Interface	USB, Ethernet
Dimensions L x W x H	200 x 150 x 20 mm
Distance between mounting holes (D)	155 mm
Type of protection	IP20
Protection class	I



Ordering data

Type	Article number	Packaging, carton
DALI x/e-touchPANEL 02	28000005	1 piece



Product matrix, page 387

Wiring diagrams and installation examples, page 451



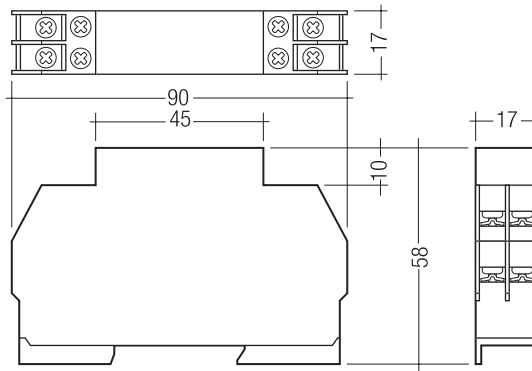
DALI SQM
Sequencer module for DALI systems

Product description

- Sequencer module for DALI systems
 - Continual transmission of DALI signals (step time)
 - Calling up scenes 0 – 15
 - End scene programmable
 - Power supply via DALI line
 - Rotary switch: 1 s to 30 min
 - For installation in switching cabinets
- For product data sheet go to www.tridonic.com,
or available on request

Technical data

Supply via	DALI cable
Current draw	9 mA from DALI
Input	Rotary switch, 1 s – 30 min. Function switch: max. cable length 100 m
Output	DALI
Ambient temperature t_a	0 ... +50 °C
Type of protection	IP20



Product matrix, page 387

Wiring diagrams and installation examples, page 451

Ordering data

Type	Article number	Packaging, carton
DALI SQM	86458211	1 piece



DALI PS

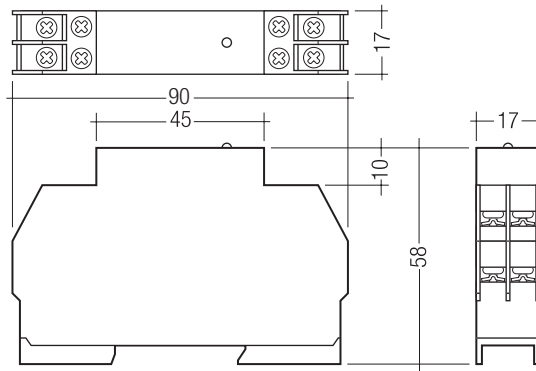
DALI power supply for installation in switch cabinet

Product description

- For supplying 200 mA for DALI devices or control modules without their own power supplies
 - For installation in switching cabinets
- For product data sheet go to www.tridonic.com, or available on request

Technical data

Rated supply voltage	120 – 240 V
Mains frequency	50 / 60 Hz
Power	4 W
Output	DALI
Max. output current, DALI	200 mA
Ambient temperature t_a	0 ... +50 °C
Type of protection	IP20



Product matrix, page 387

Wiring diagrams and installation examples, page 451

Ordering data

Type	Article number	Packaging, carton
DALI PS	24033444	1 piece



DALI PS2

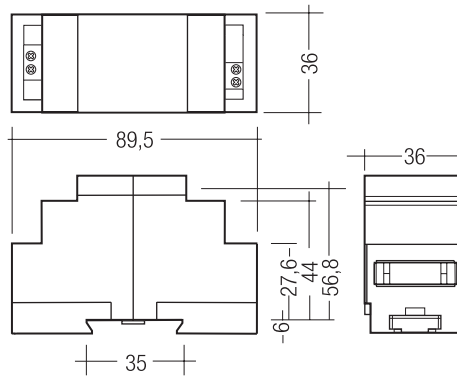
DALI power supply for installation in switch cabinet

Product description

- For supplying 240 mA for DALI devices or control modules without their own power supplies
 - For installation in switching cabinets
- For product data sheet go to www.tridonic.com, or available on request

Technical data

Rated supply voltage	220 – 240 V
Mains frequency	50 / 60 Hz
Power	5 W
Max. output current, DALI	240 mA
Operating temperature	0 ... +50 °C
Storage temperature	0 ... +70 °C
Type of protection	IP20



Product matrix, page 387

Wiring diagrams and installation examples, page 451

Ordering data

Type	Article number	Packaging, carton
DALI PS2	86458559	1 piece

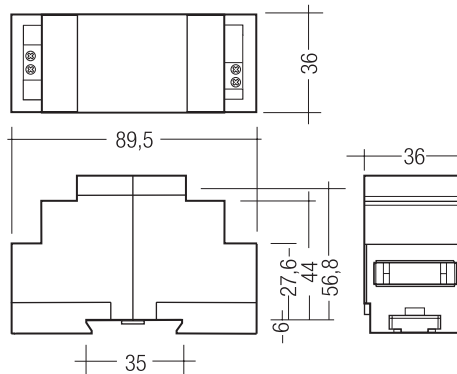


DALI PS2 standby

DALI power supply for installation in switchgear cabinets and standby function

Product description

- For supplying 240 mA for DALI devices or control modules without their own power supplies
 - For installation in switching cabinets
 - Automatic monitoring of the connected luminaires
 - The built-in relay isolates the connected equipment from the power supply via an external contactor if all the luminaires are switched off
 - The ballasts are switched on and set to the required status via DALI commands
- For product data sheet go to www.tridonic.com, or available on request



Technical data

Rated supply voltage	220 – 240 V
Mains frequency	50 / 60 Hz
Power	5 W
Max. output current, DALI	240 mA
Operating temperature	0 ... +50 °C
Storage temperature	0 ... +70 °C
Type of protection	IP20



Product matrix, page 387

Wiring diagrams and installation examples, page 451

Ordering data

Type	Article number	Packaging, carton
DALI PS2 Standby	86458560	1 piece

Specific technical data

Type	Output, relay				
	Max. switching voltage AC	Max. switching current	DC switching capability at 100 – 250 V DC	DC switching capability at 50 – 100 V DC	DC switching capability at 0 – 50 V DC
DALI PS2 Standby	250 V	1 A	0.3 A	0.5 A	1 A



DALI PS1

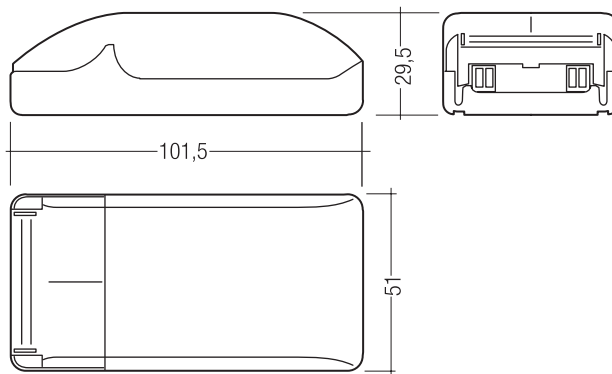
DALI power supply for separate installation

Product description

- For supplying 200 mA for DALI devices or control modules without their own power supplies
 - Surface-mounted casing
- For product data sheet go to www.tridonic.com, or available on request

Technical data

Rated supply voltage	120 – 240 V
Mains frequency	50 / 60 Hz
Power	4 W
Output	DALI
Max. output current, DALI	200 mA
Ambient temperature t_a	0 ... +50 °C
Type of protection	IP20



Product matrix, page 387

Wiring diagrams and installation examples, page 451

Ordering data

Type	Article number	Packaging, carton
DALI PS1	24034323	1 piece



DALI USB

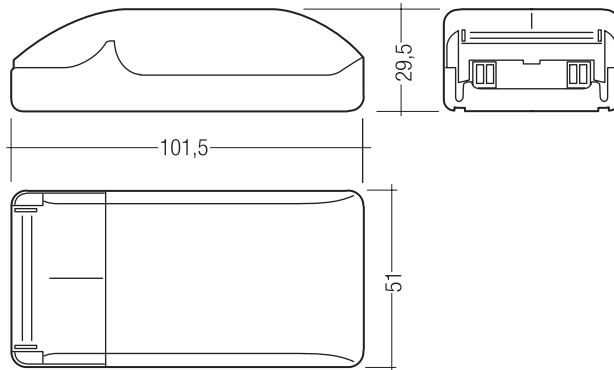
PC interface module for DALI systems

Product description

- Interface module from USB to a DALI system
 - For connecting Tridonic software tools
 - Addressing, programming and parametrising DALI installations and Tridonic devices
 - Power supply via DALI line and USB interface
- For product data sheet go to www.tridonic.com, or available on request

Technical data

Supply via	DALI cable and USB interface
Current draw	6 mA from DALI
Input	1 USB (Personal Computer)
Output	DALI
Ambient temperature t_a	0 ... +50 °C
Type of protection	IP20



Product matrix, page 387

Wiring diagrams and installation examples, page 451

Ordering data

Type	Article number	Packaging, carton
DALI USB	24138923	1 pieces



DALI DSI
Converter for DALI into DSI signals

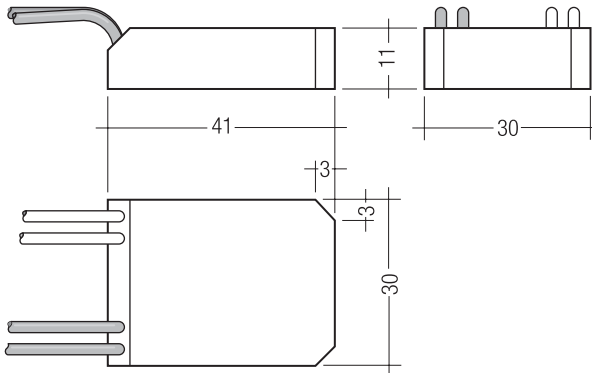
Product description

- Converter for converting DALI signals into DSI signals
 - For integrating DSI-based devices in DALI lighting control systems
 - Rotary switch for assigning the group address for the DSI output
 - 1 DSI output for a maximum of 5 DSI devices
 - Power supply via DALI line
- For product data sheet go to www.tridonic.com, or available on request



Technical data

Supply via	DALI cable
Ambient temperature t_a	0 ... +50 °C
Type of protection	IP20



Product matrix, page 387

Wiring diagrams and installation examples, page 451

Ordering data

Type	Article number	Packaging, carton
DALI DSI	24034689	1 pieces

Specific technical data

Type	Inputs			Outputs	
	DALI control input	Current draw	Number of DALI addresses	Digital control line DSI	Control output per physical output (devices)
DALI DSI	1	16 mA from DALI	1	1	5



DALI DSI II

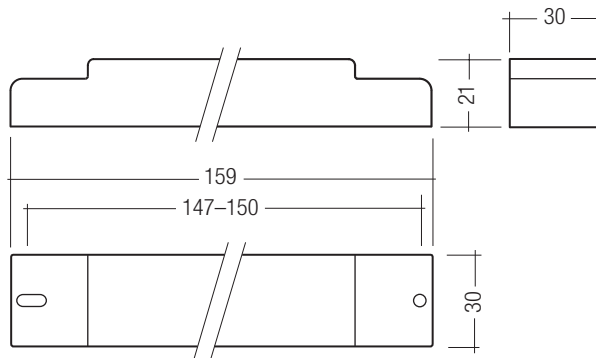
Converter for DALI into DSI signals

Product description

- Converter for converting DALI signals into DSI signals
 - For integrating DSI-based devices in DALI lighting control systems
 - 1 DALI input, 2 DSI outputs
 - A DALI address can be assigned to each DSI output
 - Rotary selector switch for assigning two group addresses for the two DSI outputs
 - 25 DSI devices can be controlled per output
 - Integrated power supply
- For product data sheet go to www.tridonic.com, or available on request

Technical data

Rated supply voltage	120 – 277 V
Mains frequency	50 / 60 Hz
Power	< 1 W
Ambient temperature t_a	0 ... +60 °C
Protection class	IP20



Product matrix, page 387

Wiring diagrams and installation examples, page 451

Ordering data

Type	Article number	Packaging, carton	Packaging, carton
DALI-DSI II	86458691	1 piece	10 piece

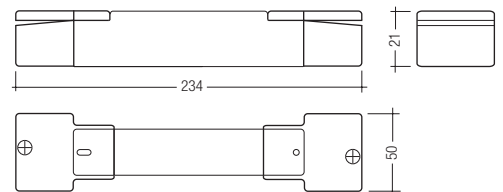
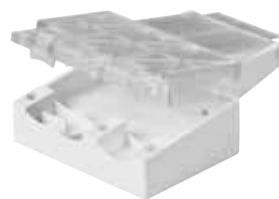
Specific technical data

Type	Inputs			Outputs		
	DALI control input	Current draw	Number of DALI addresses	Digital control line DSI	Control output per physical output (devices)	Maximum DSI cable length at 1.5 mm ²
DALI-DSI II	1	2 mA from DALI	2	2	25	250 m

RoHS

ACCES-
SORIES

Strain-relief set



Ordering data

Type	Article number	Packaging, carton
Strain-relief set	86458689	1 piece



DALI Repeater

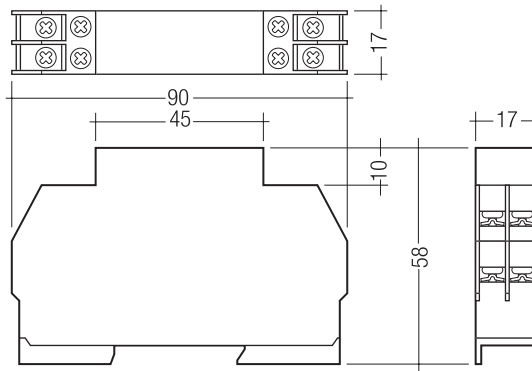
Extension of DALI cable length

Product description

- For amplifying the DALI signal
- For extending the DALI line length from 300 to 600 m
- A star-type network with multiple DALI Repeater can be set up
- Power supply via DALI line
- For installation in switching cabinets

Note

- Because of the signal delay it is not possible to connect multiple DALI Repeater in series (no cascading)
 - There is no increase in the maximum number of DALI units. A maximum of 64 DALI addresses can be configured in a DALI circuit (main and subordinate circuit)
 - Because of the electrical isolation between the main circuit and the subordinate circuit an additional DALI power supply unit is needed for each DALI Repeater
- For product data sheet go to www.tridonic.com, or available on request



Technical data

Supply via	DALI cable
Current draw for main control circuit (IN)	6 mA from DALI
Current draw for subordinate control circuit (OUT)	4 mA from DALI
Input	DALI
Output	DALI
Operating temperature	0 ... +50 °C
Storage temperature	-20 ... +70 °C
Type of protection	IP20

Ordering data

Type	Article number	Packaging, carton
DALI Repeater	86458401	1 piece



Product matrix, page 387

Wiring diagrams and installation examples, page 451

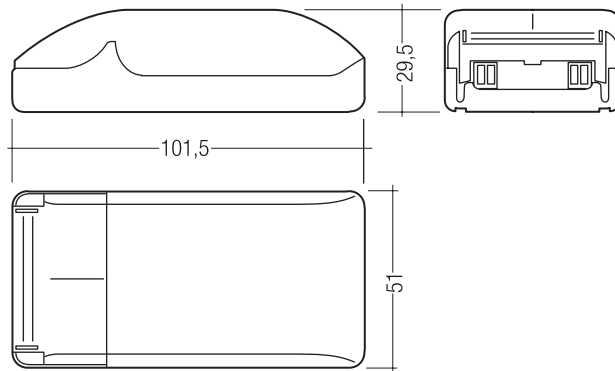


DALI Somfy animeo interface

Control module for Somfy motor control unit

Product description

- For integrating Somfy animeo IB+ motor controllers in the DALI circuit
 - Lighting moods and louvre blind positions can be recalled together
 - For animeo IB+ 4 AC motor controller (1860049, 1860081, 1860103, 1860108), animeo IB+ 4 DC motor controller (1860086), animeo IB+ 4 DC/DC-E motor controller (1860087)
 - Compatible with DALI GC-A, DALI SC and SC-A, DALI MC, DALI TOUCHPANEL 02, DALI USB and x/e-touchPANEL 02 (Version 3.00 and higher)
 - For 4 louvre blinds (4 DALI addresses therefore required)
 - Support for 16 DALI groups and 16 DALI scenes
 - Louvre blind is started up (e.g. travel) via the Somfy animeo IB+ motor controller
- For product data sheet go to www.tridonic.com, or available on request



Technical data

Rated supply voltage	220 – 240 V
Mains frequency	50 / 60 Hz
Power	4 W
Operating temperature	0 ... +50 °C
Storage temperature	-20 ... +70 °C
Type of protection	IP20

Ordering data

Type	Article number	Packaging, carton
DALI-Somfy animeo Interface	86458491	1 pieces



Product matrix, page 387

Wiring diagrams and installation examples, page 451

Specific technical data

Type	Inputs			Outputs	
	DALI control input	Current draw	Number of DALI addresses	Control output	Output, maximum number of controllable motors
DALI-Somfy animeo Interface	1	6 mA from DALI	4 (one per motor)	Somfy motor controller protocol	4

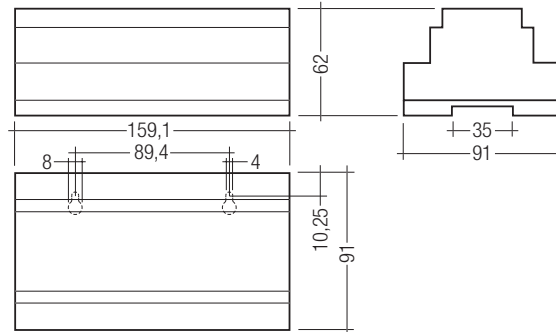


NEW

proDIM Cluster Controller
proDIM

Product description

- Independent lighting control for up to 256 DALI ballasts on 4 DALI lines
 - Can be expanded up to 500 DALI ballasts
 - User-oriented web interface for configuration and monitoring
 - Simple setup via mobile web interface
 - Status LED and installation test directly on the controller
 - Highly efficient bus supply with 240 mA per DALI line
 - Incorporation of up to 100 proDIM sensors and up to 160 proDIM XC controllers
 - Adjustable daylight regulation and control
 - Freely programmable daily scheduling with calendar function
 - Cross-DALI-line groups can be defined
 - DALI emergency lighting units can be integrated for individual batteries
 - Maintenance and monitoring function
 - Open web interface tailored to lighting requirements (ulml) for linking to building automation systems
- For product data sheet go to www.tridonic.com, or available on request



Technical data

Rated supply voltage	110 – 240 V
Mains frequency	50 / 60 Hz
Power	16 W
Max. output current, DALI	240 mA
Output voltage	16 V ±5 %
Operating temperature	0 ... +50 °C
Storage temperature	-25 ... +70 °C
Mounting	DIN rail mounting, 35 mm
Casing material	PC, ABC self-extinguishing, V0
Type of protection	IP20

Ordering data

Type	Article number	Packaging, carton	Weight per pcs.
proDIM Cluster Controller	22176714	1 piece	0.37 kg



Wiring diagrams and installation examples, page 451

Specific technical data

Type	Inputs		Outputs		Max. numbers of increments
	Ethernet	Max. transfer rate	Digital control lines DALI	Control output per physical output (devices)	
proDIM Cluster Controller	1	100 Mbit/s	4	64	4



NEW

proDIM XC
proDIM

Product description

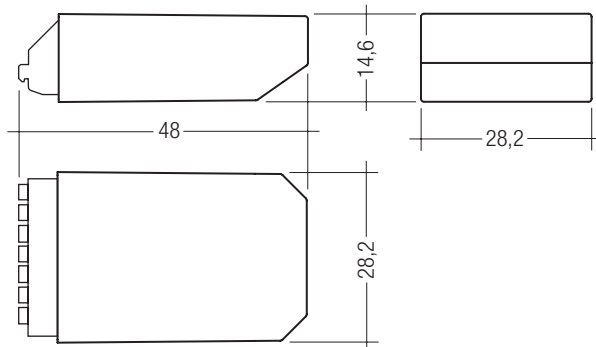
DALI input controller

- 4 independent inputs for floating contacts
 - For connecting standard momentary-action switch or switches
 - The function can be freely assigned in the Cluster Controller
 - Multiple proDIM XCs possible on the DALI line
 - Power supply via DALI line
 - Connection wires according to the terminal colours with 30 cm length included
- For product data sheet go to www.tridonic.com, or available on request



Technical data

Supply via	DALI cable
Current draw	4 mA
Input	4 momentary-action switches
Output	DALI
Operating temperature	0 ... +60 °C
Storage temperature	-25 ... +80 °C
Humidity	20 % ... 90 % (non-condensing)
Type of protection	IP20
Mounting	Mounting box for momentary-action switch
Casing material	PC, halogen-free polycarbonate, non-flammable



Wiring diagrams and installation examples, page 451

Ordering data

Type	Article number	Packaging, carton	Weight per pcs.
proDIM XC	22185328	1 piece	0.012 kg



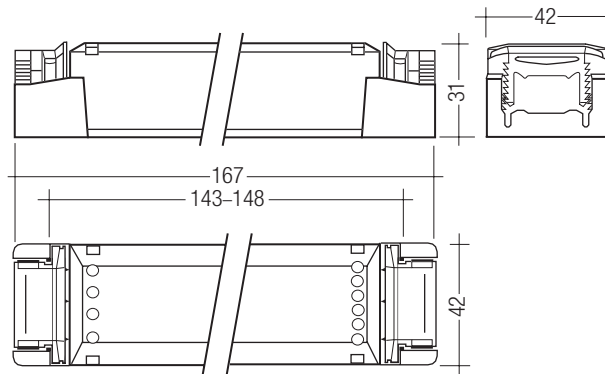
DALI 3-RM-C
DALI control module for 3 relays

Product description

- Control of up to three standard 24 V DC contactors
 - 1 DALI address per output
- For product data sheet go to www.tridonic.com,
or available on request

Technical data

Input voltage, AC	198 – 254 V
Input voltage, DC	200 – 240 V
Mains frequency	0 / 50 / 60 Hz
Power	< 30 W
Ambient temperature t_a	-25 ... +45 °C
Type of protection	IP20



Product matrix, page 387

Wiring diagrams and installation examples, page 451

Ordering data

Type	Article number	Packaging, carton	Packaging, carton
DALI 3-RM-C	86458247	1 piece	10 piece

Specific technical data

Type	Inputs			Outputs	
	DALI control input	Current draw	Number of DALI addresses	Output voltage, DC	Output power
DALI 3-RM-C	1	2 mA from DALI	3	3 x 24 V	25 W



NEW

DALI-RM/S 4x10A

DALI relay output with 4 independent 10 A switching contacts

Product description

- Switching of 4 independent and potential free contacts via DALI
 - Max. switching current per contact: 10 A at ohmic load ($\cos \Phi = 1$)
 - 1 DALI address per switching contact
 - For installation in switching cabinets
 - Status LED for indicating the operating status
 - Test switch for installation test
- For product data sheet go to www.tridonic.com,
or available on request



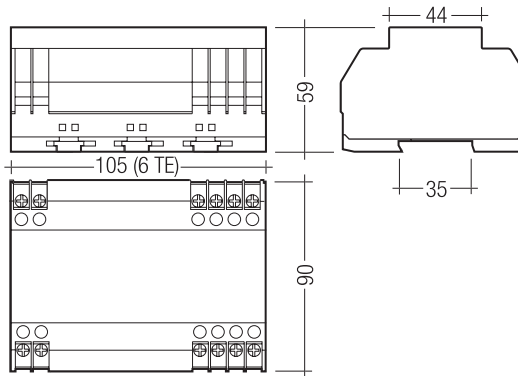
Technical data

Rated supply voltage	230 – 240 V
Mains frequency	50 / 60 Hz
Power	< 2 W
Ambient temperature t_a	0 ... +50 °C
Storage temperature	-20 ... +70 °C
Humidity ^①	5 % ... max. 85 %
Type of protection	IP20
Weight per pcs.	0.4 kg



Product matrix, page 387

Wiring diagrams and installation examples, page 451



Ordering data

Type	Article number	Packaging, carton
DALI-RM/S 4x10A	22185237	1 piece

Specific technical data

Type	Inputs			Output, relay		
	DALI control input	Current draw	Number of DALI addresses	Relay, floating	Switching output (at 125 V DC max.) ^②	Switching output (at 240 V AC max.) ^②
DALI-RM/S 4x10A	1	2 mA from DALI	4 (1 per contact)	4 (make contact)	30 W (ohmic load)	2,000 W / 10 A (ohmic load)

^① Not condensed (max. 56 days/year at 85 %).

^② More loads see data sheet.



DALI PCD 300 one4all

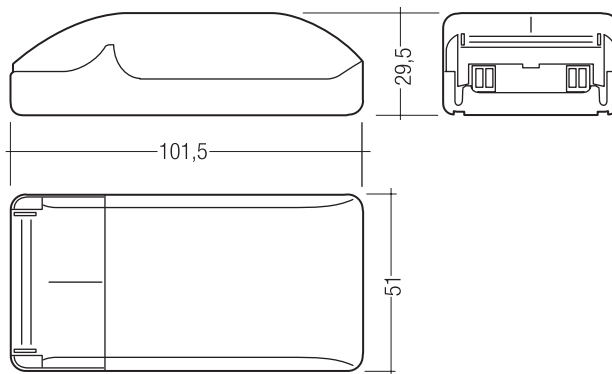
Leading-edge/trailing-edge phase dimmer

Product description

- Digital leading-edge and trailing-edge phase dimmer
 - Total connected load: 30 – 300 VA
 - one4all input: DALI, DSI and switchDIM input
 - 1 dimmed phase (output)
 - With automatic load detection
 - Surface-mounted casing
 - Status LED for indicating the operating status
- For product data sheet go to www.tridonic.com,
or available on request

Technical data

Rated supply voltage	220 – 240 V
Mains frequency	50 / 60 Hz
Connected load	30 – 300 VA
Power loss	0.75 W (1.8 W at full load)
Ambient temperature t_a	0 ... +50 °C
Type of protection	IP20



Product matrix, page 387

Wiring diagrams and installation examples, page 451

Ordering data

Type	Article number	Packaging, carton
DALI-PCD 300 one4all	86458303	20 pieces

Specific technical data

Type	Inputs			Dimmed phase	Outputs		Terminals
	Input, DALI/DSI control input and switchDIM	Current draw	Number of DALI addresses		Control range, DSI	Control range, DALI	
DALI-PCD 300 one4all	1	2 mA from DALI	1	1	0; 1 – 100 %	0; 0.1 – 100 %	0.5 – 1.5 mm ²

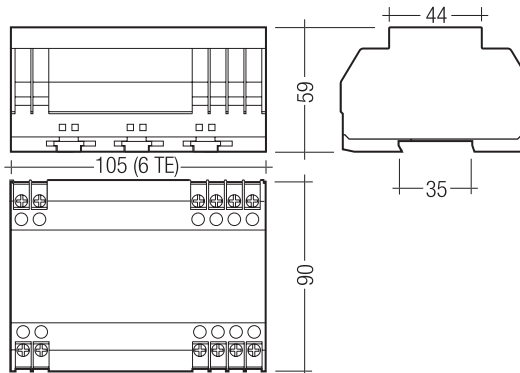


DALI PCD/S

Leading-edge/trailing-edge phase dimmer

Product description

- Digital leading-edge and trailing-edge phase dimmer
 - Total connected load: 40 – 1,000 VA
 - DALI/DSI input
 - Single (switchDIM) or double momentary-action switch input
 - Preset function: storage and retrieval of any lighting value
 - 1 dimmed phase (output)
 - With automatic load detection
 - For installation in switching cabinets
 - Status LED for indicating the operating status
- For product data sheet go to www.tridonic.com,
or available on request



Technical data

Rated supply voltage	220 – 240 V
Mains frequency	50 / 60 Hz
Connected load	40 – 1,000 VA
Power loss	2 W (15 W at full load)
Ambient temperature t_a	0 ... +40 °C
Type of protection	IP20



Product matrix, page 387

Wiring diagrams and installation examples, page 451

Ordering data

Type	Article number	Packaging, carton
DALI-PCD/S	22154332	1 piece

Specific technical data

Type	Inputs					Outputs		Terminals
	Momentary-action switch input for preset retrieval	Single or twin momentary-action switches	DALI/DSI control input	Current draw	Number of DALI addresses	Dimmed phase	Control range, output	
DALI-PCD/S	1	1	1	2 mA from DALI	1	1	0; 1 – 100 %	0.75 – 2.5 mm ²



NEW

SMART Sensor 5D 19f

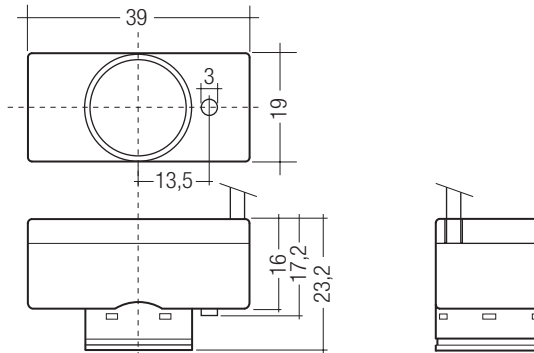
Ambient light sensor for lighting control

Product description

- Optional ambient light sensor for PCA EXCEL one4all, PCA ECO and PCA BASIC devices from the xtec II generation
 - With ambient light dependent control
 - Simple setting of the set-point via integrated momentary-action switch at the sensor
 - Compact dimensions for luminaire installation
 - Simple cable connection to the ballast via SMART interface
 - Power supply via ballast
 - Fixing on lamp possible with lamp clip
 - Max. installation height 5 m
- For product data sheet go to www.tridonic.com, or available on request

Technical data

Supply via	SMART interface
Current draw	1 mA from SMART interface
Operating temperature	0 ... +70 °C
Storage temperature	-20 ... +75 °C
Type of protection	IP20
Max. casing temperature tc	73 °C



Ordering data

Type	Article number	Packaging, bag
SMART Sensor 5D 19f	86459169	1 piece

Product matrix, page 387

Wiring diagrams and installation examples, page 451

Specific technical data

Type	Detection			Max. cable length	Control output (devices)
	Light detection angle symmetric	Light measurement at the sensor head ^①	Illuminance (factory default) ^②		
SMART Sensor 5D 19f	42°	40 – 1,000 lx	500 lx	0.8 m	1

^① The measured value at the sensor head corresponds to approx. 60 to 3,000 lux on the surface measured.

^② The illuminance is set for a room defined by Tridonic. Depending on the actual room (reflectance) the measured illuminance may deviate from this value.

The illuminance should therefore be checked in the installation and adjusted if necessary.

RoHS

ACCES-
SORIES

SMART Sensor T5 Clip



Product description

- Mounting Clip for mounting the sensor directly to the lamp incl. mounting flange

Ordering data

Type	Article number	Packaging, bag
SMART Sensor T5 Clip + Mounting Flange	86459343	10 pieces

RoHS

ACCES-
SORIES

SMART Sensor T8 Clip



Product description

- Mounting Clip for mounting the sensor directly to the lamp incl. mounting flange

Ordering data

Type	Article number	Packaging, bag
SMART Sensor T8 Clip + Mounting Flange	86459344	10 pieces

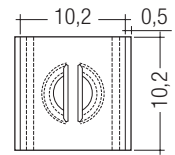
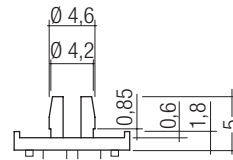
RoHS

ACCES-
SORIES

SMART Sensor Mounting Flange

Product description

- Mounting flange for connecting the sensor to the lamp clip
- Mounting flange for connecting the sensor directly to the luminaire housing



Ordering data

Type	Article number	Packaging, bag
SMART Sensor Mounting Flange	86459328	50 pieces

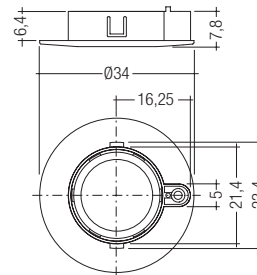
RoHS

ACCES-
SORIES

SMART Sensor Cover Frame

Product description

- Cover frame for attaching the sensor directly to the luminaire casing



Ordering data

Type	Article number	Packaging, bag
SMART Cover 19f 02	07992913	10 pieces



NEW

SMART Sensor 5DP 19f

Ambient light sensor and presence detector for lighting control

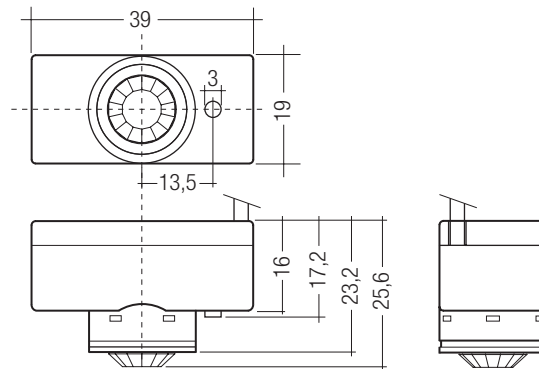
Product description

- Optional ambient light sensor and motion detector for PCA EXCEL one4all devices from the x!tec II generation
- Simple setting of the set-point via integrated momentary-action switch at the sensor
- Compact dimensions for luminaire installation
- Simple cable connection to the ballast via SMART interface
- Power supply via ballast
- Fixing on lamp possible with lamp clip
- Lighting control and presence detection can be deactivated
- Individual adjustment of the parameters with configuration software
- Max. installation height 5 m

→ For product data sheet go to www.tridonic.com,
or available on request

Technical data

Supply via	SMART interface
Current draw	1 mA from SMART interface
Operating temperature	0 ... +60 °C
Storage temperature	-20 ... +65 °C
Type of protection	IP20
Max. casing temperature tc	63 °C



Ordering data

Type	Article number	Packaging, bag
SMART Sensor 5DP 19f	86459170	1 piece



Product matrix, page 387

Wiring diagrams and installation examples, page 451

Specific technical data

Type	Detection				Max. cable length	Control output (devices)
	Light detection angle asymmetric	Light measurement at the sensor head ^①	Illuminance (factory default) ^②	Motion detection angle symmetric		
SMART Sensor 5DP 19f	31 °	40 – 1,000 lx	500 lx	92 °	0.8 m	1

^① The measured value at the sensor head corresponds to approx. 60 to 3,000 lux on the surface measured.

^② The illuminance is set for a room defined by Tridonic. Depending on the actual room (reflectance) the measured illuminance may deviate from this value.

The illuminance should therefore be checked in the installation and adjusted if necessary.

RoHS

ACCES-
SORIES

SMART Sensor T5 Clip



Ordering data

Type	Article number	Packaging, bag
SMART Sensor T5 Clip + Mounting Flange	86459343	10 pieces

Product description

- Mounting Clip for mounting the sensor directly to the lamp incl. mounting flange

RoHS

ACCES-
SORIES

SMART Sensor T8 Clip



Ordering data

Type	Article number	Packaging, bag
SMART Sensor T8 Clip + Mounting Flange	86459344	10 pieces

Product description

- Mounting Clip for mounting the sensor directly to the lamp incl. mounting flange

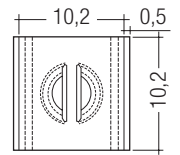
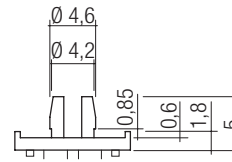
RoHS

ACCES-
SORIES

SMART Sensor Mounting Flange

Product description

- Mounting flange for connecting the sensor to the lamp clip
- Mounting flange for connecting the sensor directly to the luminaire housing



Ordering data

Type	Article number	Packaging, bag
SMART Sensor Mounting Flange	86459328	50 pieces

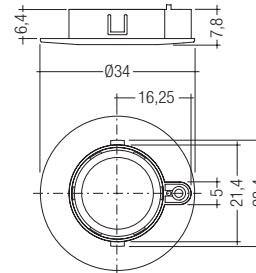
RoHS

ACCES-
SORIES

SMART Sensor Cover Frame

Product description

- Cover frame for attaching the sensor directly to the luminaire casing



Ordering data

Type	Article number	Packaging, bag
SMART Cover 19f 02	07992913	10 pieces



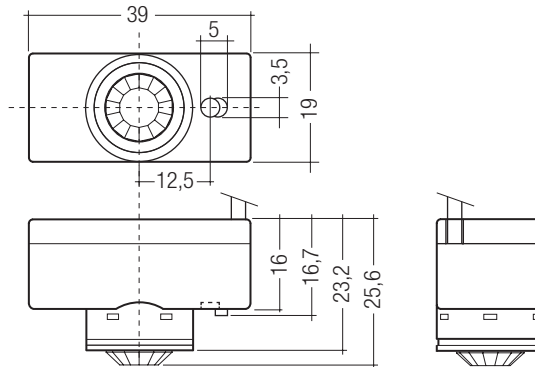
NEW

SMART Sensor 5DPI 19f

Ambient light sensor and presence detector for lighting control

Product description

- Optional ambient light sensor and presence detector for PCA EXCEL one4all devices from the xtec II generation
 - Can be remote controlled
 - Compact dimensions for luminaire installation
 - Simple cable connection to the ballast via SMART interface
 - Power supply via ballast
 - Fixing on lamp possible with lamp clip
 - Lighting control and presence detection can be deactivated
 - Individual adjustment of the parameters with configuration software
 - Optional with corridorFUNCTION profile
 - Optional connection with second ballast possible via accessory cable
 - Max. installation height 5 m
- For product data sheet go to www.tridonic.com, or available on request



Technical data

Power supply via	SMART interface
Current draw	1 mA from SMART interface
Operating temperature	0 ... +60 °C
Storage temperature	-20 ... +65 °C
Type of protection	IP20
Max. casing temperature tc	63 °C

Ordering data

Type	Article number	Packaging, bag
SMART Sensor 5DPI 19f	86459167	1 piece
SMART Sensor 5DPI 19f cF n.o.	86459327	1 piece
SMART Sensor 5DPI 19f cF 01	86459325	1 piece
SMART Sensor 5DPI 19f cF 30	86459326	1 piece



Product matrix, page 387

Wiring diagrams and installation examples, page 451

Specific technical data

Type	Detection				Max. cable length	Control output (devices)	corridorFUNCTION profile
	Light detection angle asymmetric	Light measurement at the sensor head ^①	Illuminance (factory default) ^②	Motion detection angle symmetric			
SMART Sensor 5DPI 19f	31°	40 – 1,000 lx	500 lx	92°	0.8 m	2	–
SMART Sensor 5DPI 19f cF n.o.	31°	40 – 1,000 lx	500 lx	92°	0.8 m	2	never off
SMART Sensor 5DPI 19f cF 01	31°	40 – 1,000 lx	500 lx	92°	0.8 m	2	switch-off 1 minute
SMART Sensor 5DPI 19f cF 30	31°	40 – 1,000 lx	500 lx	92°	0.8 m	2	switch-off 30 minutes

^① The measured value at the sensor head corresponds to approx. 60 to 3,000 lux on the surface measured.

^② The illuminance is set for a room defined by Tridonic. Depending on the actual room (reflectance) the measured illuminance may deviate from this value. The illuminance should therefore be checked in the installation and adjusted if necessary.

RoHS

ACCES-
SORIES

SMART Sensor T5 Clip

Product description

- Mounting Clip for mounting the sensor directly to the lamp incl. mounting flange



Ordering data

Type	Article number	Packaging, bag
SMART Sensor T5 Clip + Mounting Flange	86459343	10 pieces

RoHS

ACCES-
SORIES

SMART Sensor T8 Clip

Product description

- Mounting Clip for mounting the sensor directly to the lamp incl. mounting flange



Ordering data

Type	Article number	Packaging, bag
SMART Sensor T8 Clip + Mounting Flange	86459344	10 pieces

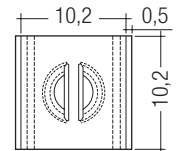
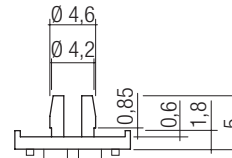
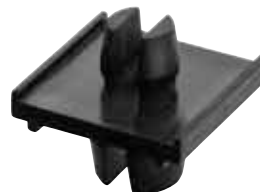
RoHS

ACCES-
SORIES

SMART Sensor Mounting Flange

Product description

- Mounting flange for connecting the sensor to the lamp clip
- Mounting flange for connecting the sensor directly to the luminaire housing



Ordering data

Type	Article number	Packaging, bag
SMART Sensor Mounting Flange	86459328	50 pieces

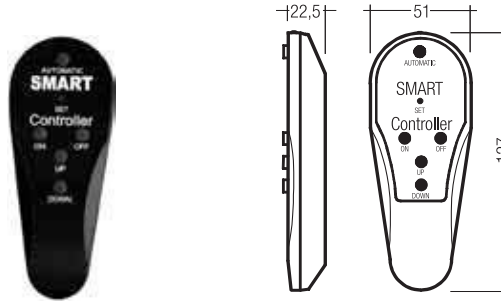
RoHS

ACCES-
SORIES

IR SMART Controller

Product description

- Optional infra-red remote control
- Switching on and off (On/Off button)
- Dimming (Up/Down button)
- Activation of automatic lighting control (Automatic button)
- Setting the threshold control point (Set button)



Ordering data

Type	Article number	Packaging, bag
DSI-SMART Controller	86451922	1 piece

RoHS

ACCES-
SORIES

SMART Sensor Extension Cable

Product description

- Cable for optional connection of the sensor with a second ballast



Ordering data

Type	Article number	Length	Packaging, bag
SMART Sensor Extension Cable	86459176	0.8 m	10 pieces

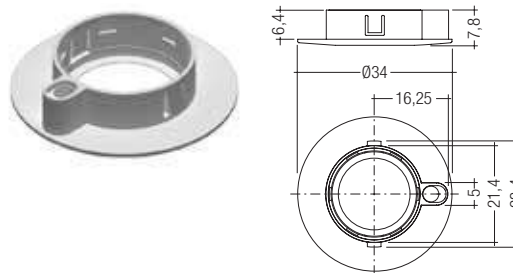
RoHS

ACCES-
SORIES

SMART Sensor Cover Frame

Product description

- Cover frame for attaching the sensor directly to the luminaire casing



Ordering data

Type	Article number	Packaging, bag
SMART Cover 19f 03	07992914	10 pieces



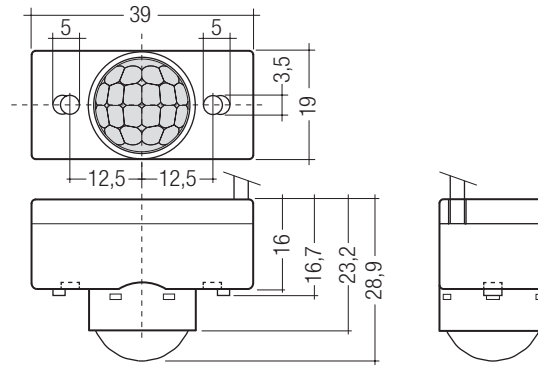
NEW

SMART Sensor 10DPI 19f

Ambient light sensor and presence detector for lighting control

Product description

- Optional ambient light sensor and motion detector for PCA EXCEL one4all devices from the x!tec II generation
 - Can be remote controlled
 - Max. installation height 10 m
 - Compact dimensions for luminaire installation
 - Simple cable connection to the ballast via SMART interface
 - Power supply via ballast
 - Fixing on lamp possible with lamp clip
 - Lighting control and presence detection can be deactivated
 - Individual adjustment of the parameters with configuration software
 - Optimal with corridorFUNCTION profile
 - Optional connection with second ballast possible via accessory cable
- For product data sheet go to www.tridonic.com, or available on request



Technical data

Supply via	SMART interface
Current draw	1 mA from SMART interface
Operating temperature	0 ... +60 °C
Storage temperature	-20 ... +65 °C
Type of protection	IP20
Max. casing temperature tc	63 °C

Ordering data

Type	Article number	Packaging, bag
SMART Sensor 10DPI 19f	86459168	1 piece
SMART Sensor 10DPI 19f cF n.o.	86459324	1 piece
SMART Sensor 10DPI 19f cF 01	86459322	1 piece
SMART Sensor 10DPI 19f cF 30	86459323	1 piece



Product matrix, page 387

Wiring diagrams and installation examples, page 451

Specific technical data

Type	Detection				Max. cable length	Control output (devices)	corridorFUNCTION profile
	Light detection angle symmetric	Light measurement at the sensor head ^①	Illuminance (factory default) ^②	Motion detection angle symmetric			
SMART Sensor 10DPI 19f	38 °	40 – 1,000 lx	500 lx	93 °	0.8 m	2	–
SMART Sensor 10DPI 19f cF n.o.	38 °	40 – 1,000 lx	500 lx	93 °	0.8 m	2	never off
SMART Sensor 10DPI 19f cF 01	38 °	40 – 1,000 lx	500 lx	93 °	0.8 m	2	switch off 1 minute
SMART Sensor 10DPI 19f cF 30	38 °	40 – 1,000 lx	500 lx	93 °	0.8 m	2	switch off 30 minutes

^① The measured value at the sensor head corresponds to approx. 60 to 3,000 lux on the surface measured.

^② The illuminance is set for a room defined by Tridonic. Depending on the actual room (reflectance) the measured illuminance may deviate from this value.
The illuminance should therefore be checked in the installation and adjusted if necessary.

RoHS

ACCES-
SORIES

SMART Sensor T5 Clip



Ordering data

Type	Article number	Packaging, bag
SMART Sensor T5 Clip + Mounting Flange	86459343	10 pieces

Product description

- Mounting Clip for mounting the sensor directly to the lamp incl. mounting flange

RoHS

ACCES-
SORIES

SMART Sensor T8 Clip



Ordering data

Type	Article number	Packaging, bag
SMART Sensor T8 Clip + Mounting Flange	86459344	10 pieces

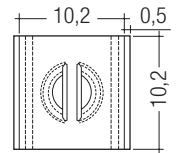
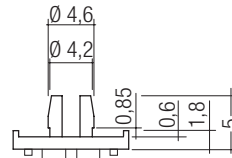
Product description

- Mounting Clip for mounting the sensor directly to the lamp incl. mounting flange

RoHS

ACCES-
SORIES

SMART Sensor Mounting Flange



Ordering data

Type	Article number	Packaging, bag
SMART Sensor Mounting Flange	86459328	50 pieces

Product description

- Mounting flange for connecting the sensor to the lamp clip
- Mounting flange for connecting the sensor directly to the luminaire housing

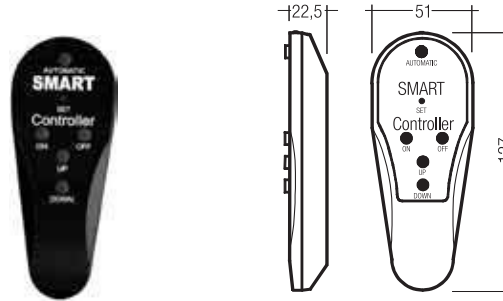
RoHS

ACCES-
SORIES

IR SMART Controller

Product description

- Optional infra-red remote control
- Switching on and off (On/Off button)
- Dimming (Up/Down button)
- Activation of automatic lighting control (Automatic button)
- Setting the threshold control point (Set button)



Ordering data

Type	Article number	Packaging, bag
DSI-SMART Controller	86451922	1 piece

RoHS

ACCES-
SORIES

SMART Sensor Extension Cable

Product description

- Cable for optional connection of the sensor with a second ballast



Ordering data

Type	Article number	Length	Packaging, bag
SMART Sensor Extension Cable	86459176	0.8 m	10 pieces

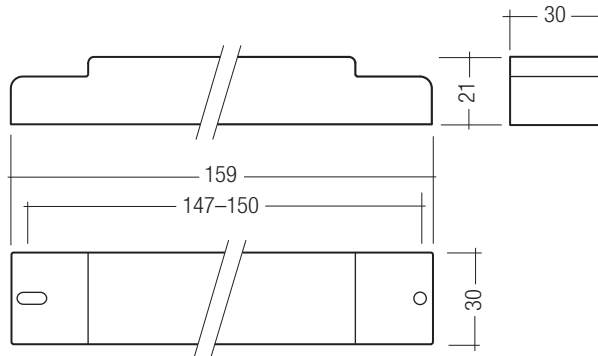


basicDIM RCL

Control module for combination with ambient light sensor, momentary-action switch and presence sensor

Product description

- Digital control module with ambient light sensor, motion detector and momentary-action switch input
 - Control module for controlling up to 25 DSI ballasts
 - Dimming, switching and saving of the daylight set value via single momentary-action switch; multiple switches can be connected in parallel
 - Saving of the daylight set value lockable
 - With the Link Line it is possible to connect up to 20 basicDIM RCL's to one system (synchronisation of motion detection)
 - Mode can be selected via rotary switch
 - Input for a maximum of 4 basicDIM sensors
- For product data sheet go to www.tridonic.com, or available on request



Technical data

Rated supply voltage	220 – 240 V
Mains frequency	50 / 60 Hz
Power	1.5 W
Operating temperature	0 ... +60 °C
Storage temperature	-25 ... +70 °C
Type of protection	IP20

Ordering data

Type	Article number	Packaging, carton	Packaging, carton
basicDIM RCL	86458998	1 piece	10 pieces



Product matrix, page 387

Wiring diagrams and installation examples, page 451

Specific technical data

Type	Inputs			Outputs			Link Line	
	Dimming momentary-action switch	Max. basicDIM sensors	Max. sensor line length	Digital control line DSI	Control output per physical output DSI (devices)	Dimming range	Voltage DC	Number of combinable modules
basicDIM RCL	single	4	10 m	1	25	1 – 100 %	15 V	20

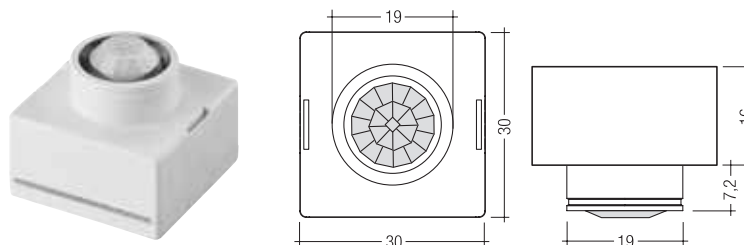
RoHS

ACCES-
SORIES

basicDIM Sensor 5DP 19f

Product description

- Optional ambient light sensor and motion detector for basicDIM RCL and basicDIM RCL DBC
- Ceiling installation
- With push-in terminal



Ordering data

Type	Article number	Packaging
basicDIM 5DP 19f	86459173	1 piece

RoHS

ACCES-
SORIES

Accessories for basicDIM Sensor 5DP 19f

Product description

- Optional for increasing the detection range of the motion detector for basicDIM Sensor 5DP 19f



Ordering data

Type	Article number	Packaging
smartDIM mirror	86454640	1 piece

RoHS

ACCES-
SORIES

basicDIM Sensor 5DP 41rc

Product description

- Optional ambient light sensor and motion detector for basicDIM RCL and basicDIM RCL DBC
- Surface mounting



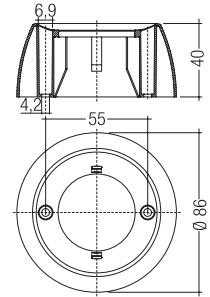
Ordering data

Type	Article number	Packaging
basicDIM Sensor 5DP 41rc	86459115	1 piece

RoHS

ACCES-
SORIES

basicDIM Sensor 5DP 41rs



Product description

- Optional ambient light sensor and motion detector for basicDIM RCL and basicDIM RCL DBC
- Surface mounting

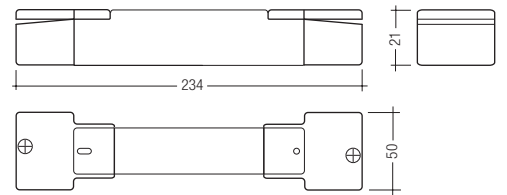
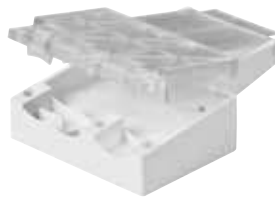
Ordering data

Type	Article number	Packaging
basicDIM Sensor 5DP 41rs	86459116	1 piece

RoHS

ACCES-
SORIES

Strain-relief set



Ordering data

Type	Article number	Packaging
Strain-relief set	86458689	1 piece



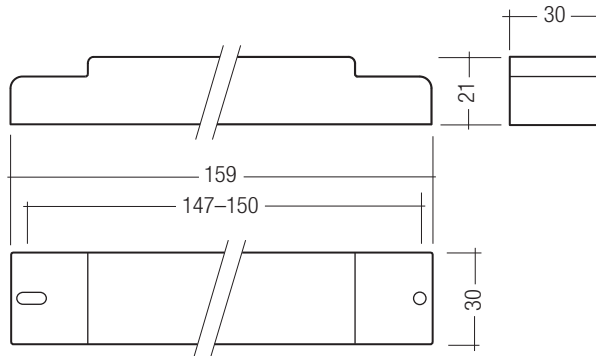
NEW

basicDIM RCL DBC

Control module for combination with ambient light sensor, momentary-action switch and presence sensor

Product description

- Digital control module with ambient light sensor, motion detector and momentary-action switch input
 - DALI Broadcast control module for controlling up to 10 DALI ballasts
 - Dimming, switching and saving of the daylight set value via single momentary-action switch; multiple switches can be connected in parallel
 - Saving of the daylight set value lockable
 - With the Link Line it is possible to connect up to 20 basicDIM RCL DBC to one system (synchronisation of motion detection)
 - Mode can be selected via rotary switch
 - Input for a maximum of 4 basicDIM sensors
- For product data sheet go to www.tridonic.com, or available on request



Technical data

Rated supply voltage	220 – 240 V
Mains frequency	50 / 60 Hz
Power	1.5 W
Operating temperature	0 ... +60 °C
Storage temperature	-25 ... +70 °C
Type of protection	IP20



Product matrix, page 387

Wiring diagrams and installation examples, page 451

Ordering data

Type	Article number	Packaging, carton	Packaging, carton
basicDIM RCL DBC	86459306	1 piece	10 pieces

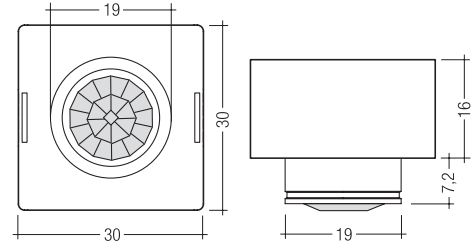
Specific technical data

Type	Inputs			Outputs			Link Line	
	Dimming momentary-action switch	Max. basicDIM sensors	Max. sensor line length	Digital control line DALI	Control output per physical output DALI (devices)	Dimming range	Voltage DC	Number of combinable modules
basicDIM RCL DBC	single	4	10 m	1	10	1 – 100 %	15 V	20

RoHS

ACCES-
SORIES

basicDIM Sensor 5DP 19f



Product description

- Optional ambient light sensor and motion detector for basicDIM RCL and basicDIM RCL DBC
- Ceiling installation
- With push-in terminal

Ordering data

Type	Article number	Packaging
basicDIM 5DP 19f	86459173	1 piece

RoHS

ACCES-
SORIES

Accessories for basicDIM Sensor 5DP 19f



Product description

- Optional for increasing the detection range of the motion detector for basicDIM Sensor 5DP 19f

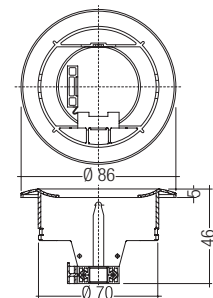
Ordering data

Type	Article number	Packaging
smartDIM mirror	86454640	1 piece

RoHS

ACCES-
SORIES

basicDIM Sensor 5DP 41rc



Product description

- Optional ambient light sensor and motion detector for basicDIM RCL and basicDIM RCL DBC
- Surface mounting

Ordering data

Type	Article number	Packaging
basicDIM Sensor 5DP 41rc	86459115	1 piece

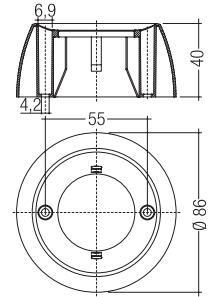
RoHS

ACCES-
SORIES

basicDIM Sensor 5DP 41rs

Product description

- Optional ambient light sensor and motion detector for basicDIM RCL and basicDIM RCL DBC
- Surface mounting



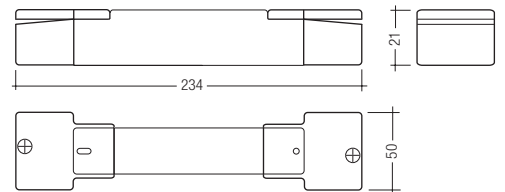
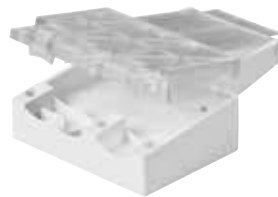
Ordering data

Type	Article number	Packaging
basicDIM Sensor 5DP 41rs	86459116	1 piece

RoHS

ACCES-
SORIES

Strain-relief set



Ordering data

Type	Article number	Packaging
Strain-relief set	86458689	1 piece



DSI-SMART PTM

Ambient light sensor and presence detector for constant lighting control

Product description

- Ambient light sensor with motion detector
- Momentary-action switch input for on/off switching and dimming
- 3 different casing versions
- For 4 or 25 DSI or DALI ballasts
- Functions can be configured with the DSI-SMART Programmer
→ For product data sheet go to www.tridonic.com,
or available on request

Technical data

Rated supply voltage	220 – 240 V
Mains frequency	50 / 60 Hz
Operating temperature	0 ... +60 °C
Storage temperature	-25 ... +60 °C
Type of protection	IP20



Product matrix, page 387

Wiring diagrams and installation examples, page 451

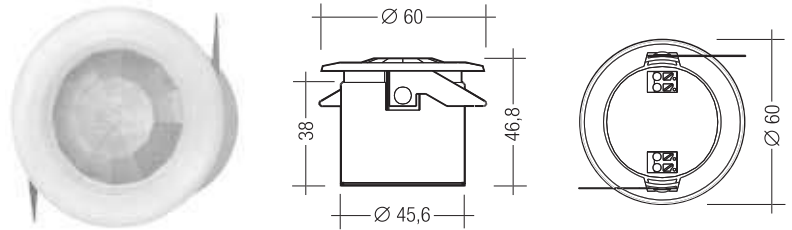


Fig. 1

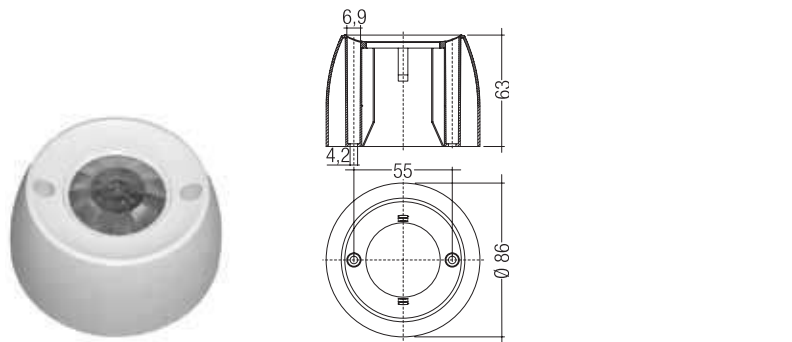


Fig. 2

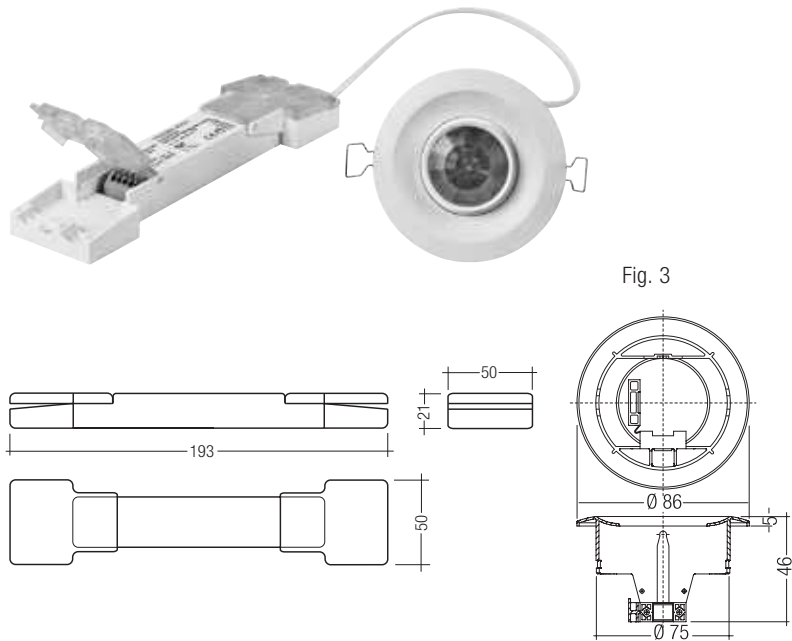


Fig. 3

Ordering data

Type		Article number	Figure	Packaging, carton
DSI-SMART PTM integrated	Luminaire installation	86458588	1	10 pieces
DSI-SMART PTM remote surface	Surface mounting	86458589	2	1 piece
DSI-SMART PTM remote ceiling	Ceiling installation	86458587	3	1 piece

Specific technical data

Type	Supply		Inputs	Outputs		
	Power	Output, standby	Dimming momentary-action switch	Digital control line DSI/DALI [®]	Control output per physical output (devices)	Maximum DSI cable length at 1.5 mm ²
DSI-SMART PTM integrated	1.7 W	1.5 W	single	1	4	250 m
DSI-SMART PTM remote surface	1.7 W	1.5 W	single	1	4	250 m
DSI-SMART PTM remote ceiling	3.9 W	1.3 W	single	1	25	250 m

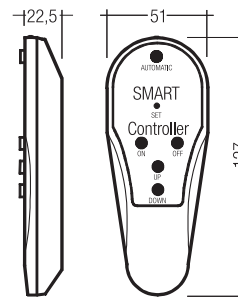
[®] DALI from DSI SMART PTM V1.1 – for parameterization the DSI SMART Programmer from V2.01 is required.

RoHS

ACCES- SORIES IR SMART Controller

Product description

- Optional infra-red remote control
- Switching on and off (On/Off button)
- Dimming (Up/Down button)
- Activation of automatic lighting control (Automatic button)
- Setting the threshold control point (Set button)



Ordering data

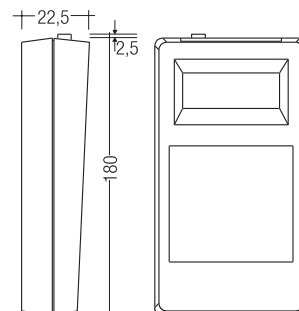
Type	Article number	Packaging, carton
DSI-SMART Controller	86451922	1 piece

RoHS

ACCES- SORIES DSI SMART Programmer

Product description

- Optional infra-red programming unit for DSI-SMART PTM
- Settings can be read and modified
- Programmable functions such as light level, time delay, P.I.R., bright-out, power up, start, override



Ordering data

Type	Article number	Packaging, carton
DSI-SMART Programmer	86447355	1 piece

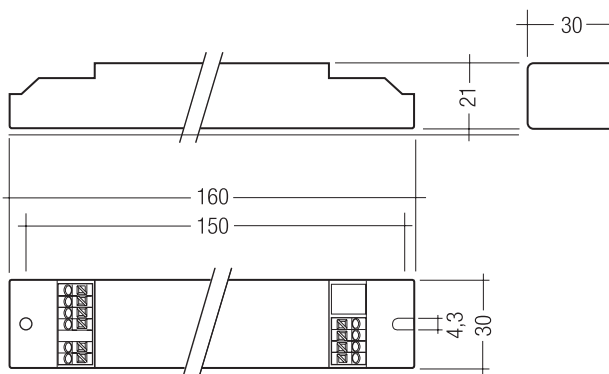


smartDIM SM Ip

Control module for combination with ambient light sensor, momentary-action switch or presence sensor

Product description

- Digital DSI control module (luminaire installation unit) for daylight control, motion detector and momentary-action switch input
 - For luminaire installation in a low-profile casing
 - Input for a maximum of 2 smartDIM sensors
 - Dimming and switching via single momentary-action switch; multiple switches can be connected in parallel
 - Mode can be selected via rotary switch
 - The device can be disconnected from the power supply via a built-in relay (this reduce standby losses)
- For product data sheet go to www.tridonic.com, or available on request



Technical data

Rated supply voltage	220 – 240 V
Mains frequency	50 / 60 Hz
Power	1.5 W
Operating temperature	0 ... +60 °C
Storage temperature	-25 ... +55 °C
Type of protection	IP20



Product matrix, page 387

Wiring diagrams and installation examples, page 451

Ordering data

Type	Article number	Packaging, carton
smartDIM SM Ip	86458337	10 pieces

Specific technical data

Type	Inputs			Outputs			Output, relay (L')		
	Dimming momentary-action switch	Max. smartDIM sensors	Max. sensor line length	Digital control line DSI	Control output per physical output (devices)	Maximum DSI cable length at 1.5 mm ²	Max. switching output (e.g. PCA)	Maximum apparent power	Max. switching output
smartDIM SM Ip	single	2	10 m	1	25	250 m	2	200 VA	500 W

RoHS

ACCES-
SORIES

smartDIM Sensor 1

Product description

- Optional ambient light sensor and motion detector for smartDIM SM Ip
- Compact low-profile dimensions for luminaire installation
- With push-in terminal or cable



Product matrix, page 387

Wiring diagrams and installation examples, page 451

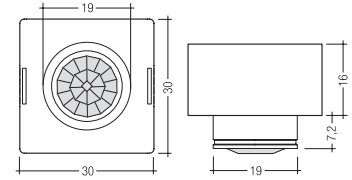


Fig. 1

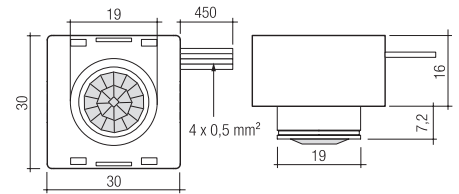


Fig. 2

Ordering data

Type	Article number	Figure	Packaging, carton
smartDIM Sensor 1	86454265	1	50 pieces
smartDIM Sensor 1 Cable	86458462	2	25 pieces

RoHS

ACCES-
SORIES

Accessories for smartDIM Sensor

Product description

- Optional for increasing the detection range of the motion detector for smartDIM Sensor 1



Ordering data

Type	Article number	Packaging, carton
smartDIM Mirror	86454640	1 piece

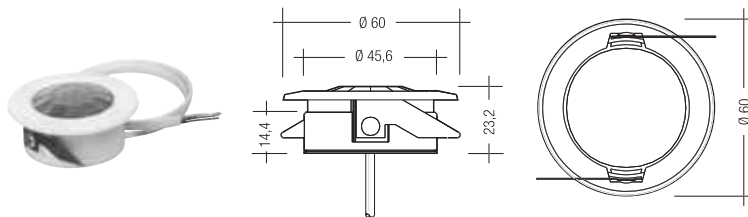
RoHS

ACCES-
SORIES

smartDIM Sensor 2

Product description

- Optional ambient light sensor and motion detector for smartDIM SM Ip
- Compact low-profile dimensions for luminaire installation



Ordering data

Type	Article number	Packaging, carton
smartDIM Sensor 2	86454523	10 pieces



Product matrix, page 387

Wiring diagrams and installation examples, page 451



modularDIM Basic

Control and lighting regulation module for 3 DSI channels

Product description

- Basic module for manual dimming and switching of 3 independent DSI output groups
 - SELV switch inputs for using conventional momentary-action switches
 - Up to 100 DSI devices per output channel
 - Floating motion detector inputs for switching each group
 - Ready to start without programming
 - For installation in switching cabinets
- For product data sheet go to www.tridonic.com, or available on request



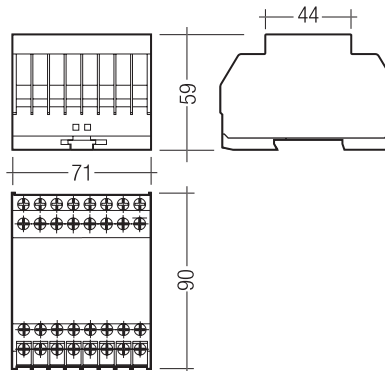
Technical data

Rated supply voltage	120 – 277 V
Mains frequency	50 / 60 Hz
Power	< 10 W
Ambient temperature t_a	0 ... +50 °C
Type of protection	IP20



Product matrix, page 387

Wiring diagrams and installation examples, page 451



Ordering data

Type	Article number	Packaging, carton	Packaging, carton
modularDIM BASIC	86454539	1 piece	10 piece

Specific technical data

Type	Inputs		Outputs		
	Dimming momentary-action switch	Presence sensor	Digital control line DSI	Control output per physical output (devices)	Maximum DSI cable length at 1.5 mm ²
modularDIM BASIC	1-way / 2-way	3	3	100	250 m



ACCES-
SORIES

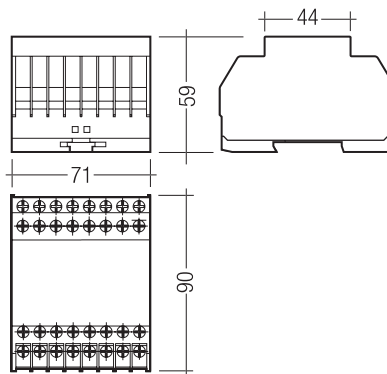
modularDIM SC

Product description

- Optional expansion module for scene control in the modularDIM system
- Retrieval and programming of up to 4 lighting scenes
- 4 SELV switch inputs for using conventional momentary-action switches
- 4 outputs for status LEDs

Technical data

Input, 4 momentary-action switches	single
Ambient temperature ta	0 ... +50 °C
Type of protection	IP20



Product matrix, page 387

Wiring diagrams and installation examples, page 451

Ordering data

Type	Article number	Packaging, carton	Packaging, carton
modularDIM SC	86454545	1 piece	10 piece



ACCES-
SORIES

modularDIM DM

Product description

- Optional expansion module for daylight control in the modularDIM system
- Simple programming of independent daylight characteristics for each DSI group
- On/off switching of the daylight function by means of conventional switches

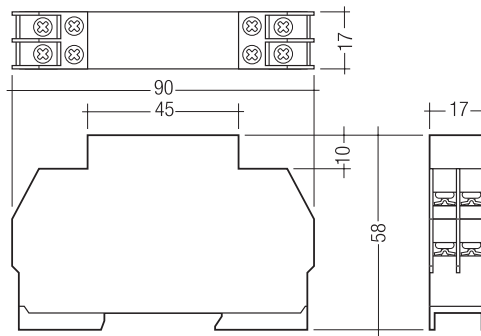
Technical data

Input, light sensor	1
Input, switch man/auto	1
Ambient temperature t_a	0 ... +50 °C
Type of protection	IP20



Product matrix, page 387

Wiring diagrams and installation examples, page 451



Ordering data

Type	Article number	Packaging, carton	Packaging, carton
modularDIM DM	86454564	1 piece	10 piece



ACCES-
SORIES

Accessories for modularDIM DM

Product description

- Ceiling sensor for measuring daylight



Ordering data

Type	Article number	Packaging, carton	Packaging, carton
Sensor DAYLIGHT	86454586	1 piece	40 pieces



ACCES-
SORIES

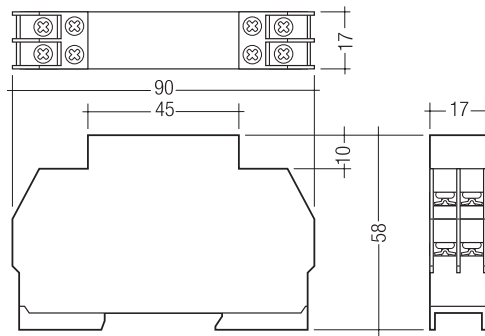
modularDIM LC

Product description

- Optional expansion module for non-floating motion detectors or momentary-action switches in the modularDIM system

Technical data

Rated supply voltage	220 – 240 V
Mains frequency	50 / 60 Hz
Max. output dielectric strength	30 V (SELV)
Input, with electrical isolation	4000 V 2 min.; 6 mm (SELV)
Ambient temperature t_a	0 ... +50 °C
Type of protection	IP20



Product matrix, page 387

Wiring diagrams and installation examples, page 451

Ordering data

Type	Article number	Packaging, carton	Packaging, carton
modularDIM LC	86457888	1 piece	10 piece



DSI-IR

Control module with input for infra-red receiver
and single momentary-action switch

Product description

- DSI control module for infra-red receiver and momentary-action switch input
 - For a luminaire group of up to 25 DSI ballasts
 - Input for one-way momentary-action switch for dimming
 - Input for infra-red receiver IRED
- For product data sheet go to www.tridonic.com, or available on request

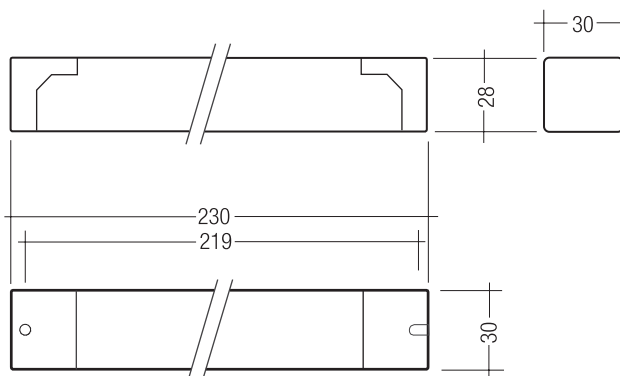
Technical data

Rated supply voltage	230 – 240 V
Mains frequency	50 / 60 Hz
Power	1 W
Ambient temperature t_a	-25 ... +60 °C
Type of protection	IP20



Product matrix, page 387

Wiring diagrams and installation examples, page 451



Ordering data

Type	Article number	Packaging, carton	Packaging, carton
DSI-IR	22114184	1 piece	10 piece

Specific technical data

Type	Inputs			Outputs		
	Dimming momentary-action switch	Infra-red receiver	Max. sensor line length	Digital control line DSI	Control output per physical output (devices)	Maximum DSI cable length at 1.5 mm ²
DSI-IR	1-way / 2-way	1	10 m	1	25	50 m



DSI-2IR

Control module with input for infra-red receiver
and single momentary-action switch

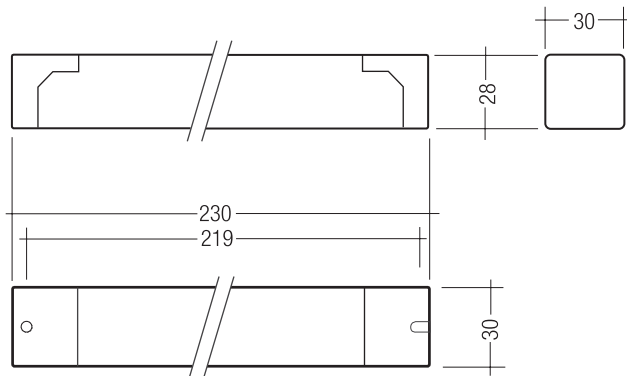
Product description

- DSI control module for infra-red receiver and momentary-action switch input
 - For up to 2 luminaire groups each with 25 digital dimmable ballasts
 - Input for 2 one-way momentary-action switches for dimming
 - Input for infra-red receiver IRED
- For product data sheet go to www.tridonic.com, or available on request



Technical data

Rated supply voltage	230 – 240 V
Mains frequency	50 / 60 Hz
Power	1 W
Ambient temperature t_a	-25 ... +60 °C
Type of protection	IP20



Product matrix, page 387

Wiring diagrams and installation examples, page 451

Ordering data

Type	Article number	Packaging, carton	Packaging, carton
DSI-2IR	22114190	1 piece	10 piece

Specific technical data

Type	Inputs			Outputs		
	Dimming momentary-action switch	Infra-red receiver	Max. sensor line length	Digital control line DSI	Control output per physical output (devices)	Maximum DSI cable length at 1.5 mm ²
DSI-2IR	1-way/2-way (per DSI output)	1	10 m	2	25	50 m

RoHS

ACCES-
SORIES

IRS

Product description

- Optional infra-red remote control for DSI-IR and DSI-2IR
- For controlling up to 5 addressed DSI-IR / DSI-2IR control modules
- Storage and retrieval of three lighting scenarios
- Complete with wall bracket



Ordering data

Type	Article number	Packaging, carton
IRS Infra-red remote control	20975492	1 piece

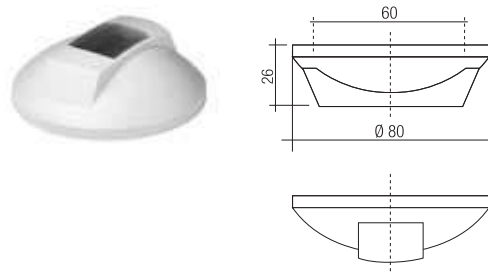
RoHS

ACCES-
SORIES

IRED

Product description

- Optional infra-red receiver for ceiling mounting for DSI-IR and DSI-2IR
- Compact low-profile dimensions



Ordering data

Type	Article number	Packaging, carton
IRS Infra-red remote control	22114587	1 piece

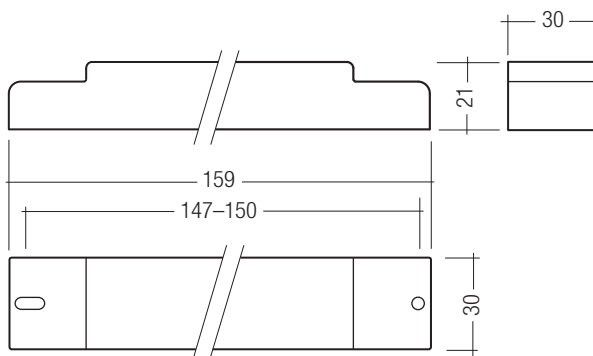


DSI-V/T

Control module for amplifying DSI signals or switch input

Product description

- Multi-functional DSI controller
 - For amplifying the DSI signal for a maximum of 50 DSI devices or for cascading long lines
 - Special function for tunnel applications
 - Function can be set via DIP switches
 - Input for manual dimming
 - Input for motion detector or momentary-action switch for scene recall
 - Different motion detector functions can be set
 - One scene can be set and recalled
- For product data sheet go to www.tridonic.com, or available on request



Technical data

Rated supply voltage	120 – 277 V
Mains frequency	50 / 60 Hz
Power	1 W
Ambient temperature t_a	-25 ... +60 °C
Type of protection	IP20

Ordering data

Type	Article number	Packaging, carton	Packaging, carton
DSI-V/T	86458690	1 piece	10 piece

→ [Product matrix](#), page 387

[Wiring diagrams and installation examples](#), page 451

Specific technical data

Type	Inputs			Outputs		
	Dimming momentary-action switch	Presence sensor	DSI signal ^①	Digital control line DSI	Control output per physical output (devices)	Maximum DSI cable length at 1.5 mm ² ^②
DSI-V/T	1-way / 2-way	1	1	1	50	250 m

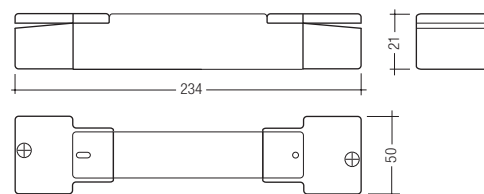
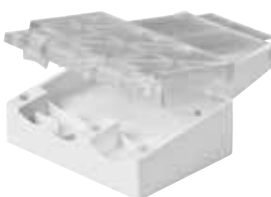
^① One DSI-V/T corresponds to the DSI load of two DSI devices.

^② Max. cable length in tunnel/security mode = 500 m (DSI-V function only).

RoHS

ACCES-
SORIES

Strain-relief set



Ordering data

Type	Article number	Packaging, carton
Strain-relief set	86458689	1 piece



Smart SWITCH II

Automatic switching based on presence and light level

Product description

- Motion detector for luminaire installation
- For automatic on/off switching of luminaires with electronic ballasts
- “Bright-Out” function: luminaire is not switched on if there is adequate brightness
- Maximum of 1 sensor possible
- Low-profile casing (21 x 30 mm)
- For a maximum of 2 ECGs
- Delay time and light value for the “Bright-Out” function can be set via 2 potentiometers

→ For product data sheet go to www.tridonic.com, or available on request



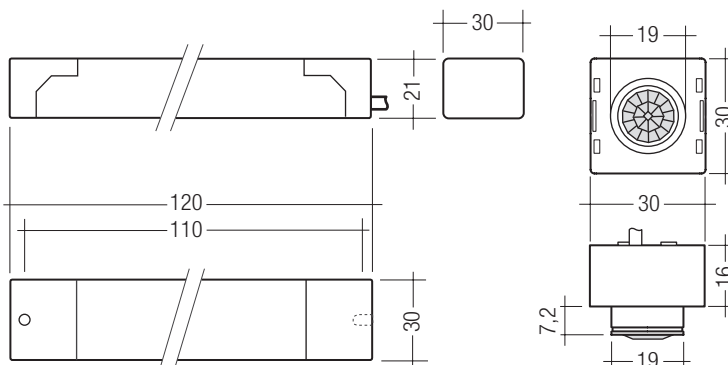
Technical data

Rated supply voltage	220 – 240 V
Mains frequency	50 / 60 Hz
Power	7.5 VA
Output, standby	0.6 W
Ambient temperature t_a	0 ... +60 °C



Product matrix, page 387

Wiring diagrams and installation examples, page 451



Ordering data

Type	Article number	Packaging, carton
Smart SWITCH II	86458452	10 pieces
Smart SWITCH strain relief	86458246	10 pieces

Specific technical data

Type	Inputs		Output, relay (L')			
	Max. Smart SWITCH sensors	Sensor cable length	L' (switched phase)	Max. switching output (e.g. PCA)	Max. switching output [W]	Max. switching output [VA]
Smart SWITCH II	1	0.50 m (can be extended to 2 m max.)	220 – 240 V	2	500 W	200 VA
Smart SWITCH strain relief	1	0.25 m (can be extended to 2 m max.)	220 – 240 V	2	500 W	200 VA

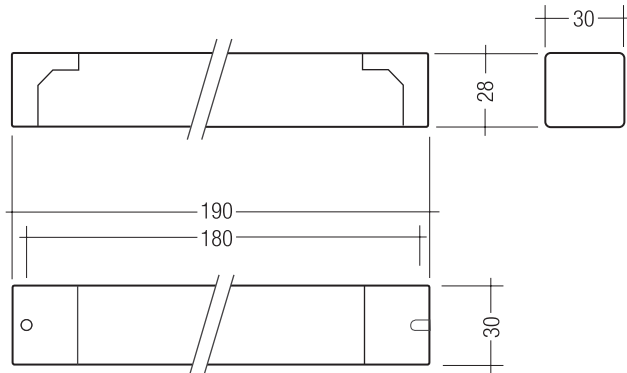


DSI-A/D

Converter for 1...10 V into DSI signal 1-channel for installation in luminaire

Product description

- Converter for converting analogue signals into DSI signals
 - For connecting DSI devices in 1...10 V control systems
 - For a maximum of 50 DSI devices
 - Constant lighting control possible via terminal for Smart-LS II (article number: 86448347)
 - On/off switching via separate switch input
- For product data sheet go to www.tridonic.com, or available on request



Technical data

Rated supply voltage	230 – 240 V
Mains frequency	50 / 60 Hz
Power	4 W
Ambient temperature t_a	0 ... +60 °C
Type of protection	IP20



Product matrix, page 387

Wiring diagrams and installation examples, page 451

Ordering data

Type	Article number	Packaging, carton	Packaging, carton
DSI-A/D	86453957	1 piece	10 piece

Specific technical data

Type	Inputs				Outputs		
	Dimming	Dimming, potentiometer (optional) ^①	ON/OFF switch (220–240 V)	Ambient light sensor	Digital control line DSI	Control output per physical output (devices)	Maximum DSI cable length at 1.5 mm ²
DSI-A/D	1 ... 10 V	47 (≥ 47 ≤ 100) kOhm	1	1	1	50	100 m

^① Potentiometer with linear characteristics, optimum: 47 kOhm, possible range: 47 – 100 kOhm; power ≥ 0.5 W.



DSI-A/DS

Converter for 1...10 V into DSI signal 1-channel for installation in switchgear cabinet

Product description

- Converter for converting analogue signals into DSI signals
 - For installation in switching cabinets
 - For connecting DSI devices in 1...10 V control systems
 - For a maximum of 100 DSI devices
 - On/off switching via separate switch input
- For product data sheet go to www.tridonic.com, or available on request



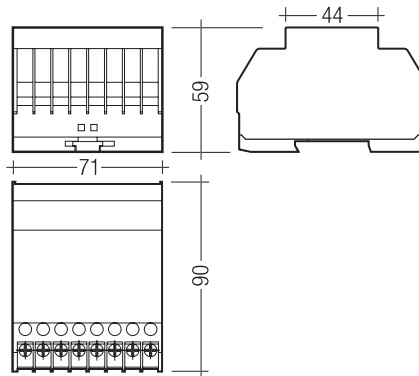
Technical data

Rated supply voltage	230 – 240 V
Mains frequency	50 / 60 Hz
Power	4 W
Ambient temperature t_a	0 ... +50 °C
Type of protection	IP20



Product matrix, page 387

Wiring diagrams and installation examples, page 451



Ordering data

Type	Article number	Packaging, carton	Packaging, carton
DSI-A/DS	86456111	1 piece	10 piece

Specific technical data

Type	Inputs			Outputs		
	Dimming	Dimming, potentiometer (optional) ^①	ON/OFF switch (220–240 V)	Digital control line DSI	Control output per physical output (devices)	Maximum DSI cable length at 1.5 mm ²
DSI-A/DS	1 ... 10 V	47 (≥ 47 ≤ 100) kOhm	1	1	100	250 m

^① Potentiometer with linear characteristics, optimum: 47 kOhm, possible range: 47 – 100 kOhm; power ≥ 0.5 W.



NEW

KNX-DSI/S 6CH

Converter for KNX into DSI signals for installation in switch cabinet

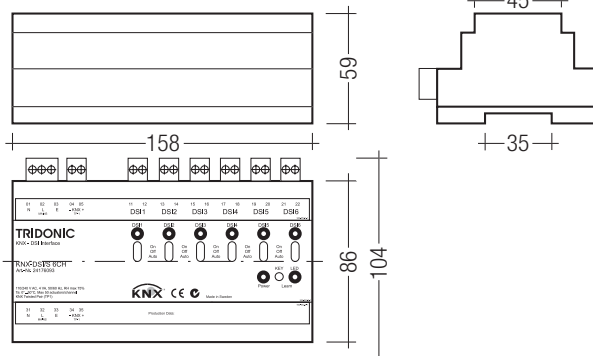
Product description

- Converter for converting KNX signals into DSI signals
 - For connecting digital DSI devices in KNX systems
 - Real-time clock for controlling of time events
 - 6 DSI outputs each for 50 DSI devices
 - For installation in switching cabinets
 - Status LED for indicating the operating status
 - Test switch for installation test
- For product data sheet go to www.tridonic.com, or available on request



Technical data

Rated supply voltage	110 – 240 V
Mains frequency	50 / 60 Hz
Power	5 W
Storage temperature	-20 ... +70 °C
Ambient temperature ta	0 ... +50 °C
Humidity	5 % ... max. 75 %
Type of protection	IP20



Ordering data

Type	Article number	Packaging, carton
KNX-DSI/S 6CH	24176093	1 piece

Specific technical data

Type	Inputs		Outputs	
	Dimming / Switching / Reporting	Digital control line DSI	Control output per physical output (devices)	Maximum DSI cable length at 1.5 mm ²
KNX-DSI/S 6CH	KNX (TP-1)	6	50	250 m



NEW

LON-DSI/S 6CH

Converter for LON into DSI signals for installation in switch cabinet

Product description

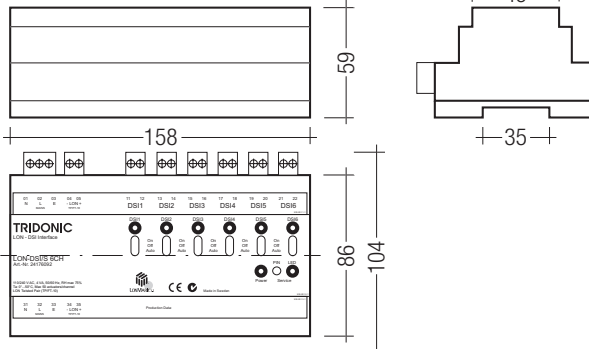
- Converter for converting LON signals into DSI signals
- For connecting digital DSI devices in LON systems
- Real-time clock for controlling of time events
- 6 DSI outputs each for 50 DSI devices
- For installation in switching cabinets
- Status LED for indicating the operating status
- Test switch for installation test

→ For product data sheet go to www.tridonic.com,
or available on request



Technical data

Rated supply voltage	110 – 240 V
Mains frequency	50 / 60 Hz
Power	5 W
Storage temperature	-20 ... +70 °C
Ambient temperature ta	0 ... +50 °C
Humidity	5 % ... max. 75 % (non-condensing)
Type of protection	IP20



Ordering data

Type	Article number	Packaging, carton
LON-DSI/S 6CH	24176092	1 piece

Specific technical data

Type	Inputs		Outputs	
	Dimming / Switching / Reporting	Digital control line DSI	Control output per physical output (devices)	Maximum DSI cable length at 1.5 mm ²
LON-DSI/S 6CH	LON (TP/FT-10)	6	50	250 m

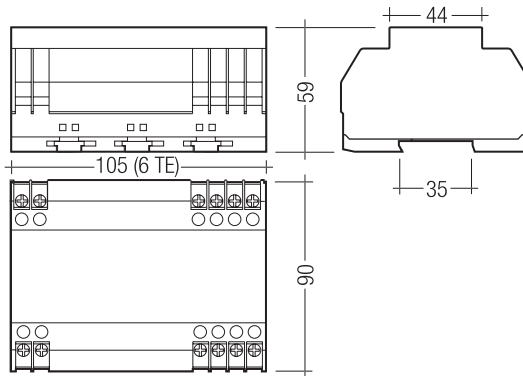


DSI-PCD/S

Leading-edge/trailing-edge phase dimmer 40 – 1,000 VA with preset

Product description

- Digital leading-edge and trailing-edge phase dimmer
 - Control via DSI signal or momentary-action switch
 - Preset function: storage and retrieval of any lighting value
 - With automatic load detection
 - For installation in switching cabinets
 - Status LED for indicating the operating status
- For product data sheet go to www.tridonic.com,
or available on request



Technical data

Rated supply voltage	220 – 240 V
Mains frequency	50 / 60 Hz
Connected load	40 – 1,000 VA
Power loss	2 W (15 W at full load)
Ambient temperature t_a	0 ... +40 °C
Type of protection	IP20



Product matrix, page 387

Wiring diagrams and installation examples, page 451

Ordering data

Type	Article number	Packaging, carton
DSI-PCD/S	22154333	1 pieces

Specific technical data

Type	Inputs			Outputs		Terminals
	Momentary-action switch input for preset retrieval	Single or twin momentary-action switches	DSI control input	Dimmed phase	Control range, output	
DSI-PCD/S	1	1	1	1	0; 1 – 100 %	0.75 – 2.5 mm ²



DSI-RK

Relay module for switching ohmic loads

Product description

- Relay module
 - For switching ohmic loads
 - Operation via momentary-action switch (switchDIM) or DSI signal
 - Parametrisation (RELAY-ON, RELAY-OFF) via configTOOL software
 - Floating switching output
- For product data sheet go to www.tridonic.com,
or available on request

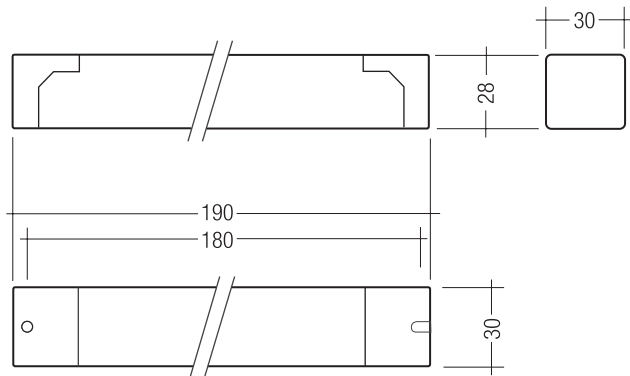
Technical data

Rated supply voltage	220 – 240 V
Mains frequency	50 / 60 Hz
Ambient temperature t_a	0 ... +60 °C
Type of protection	IP20



Product matrix, page 387

Wiring diagrams and installation examples, page 451



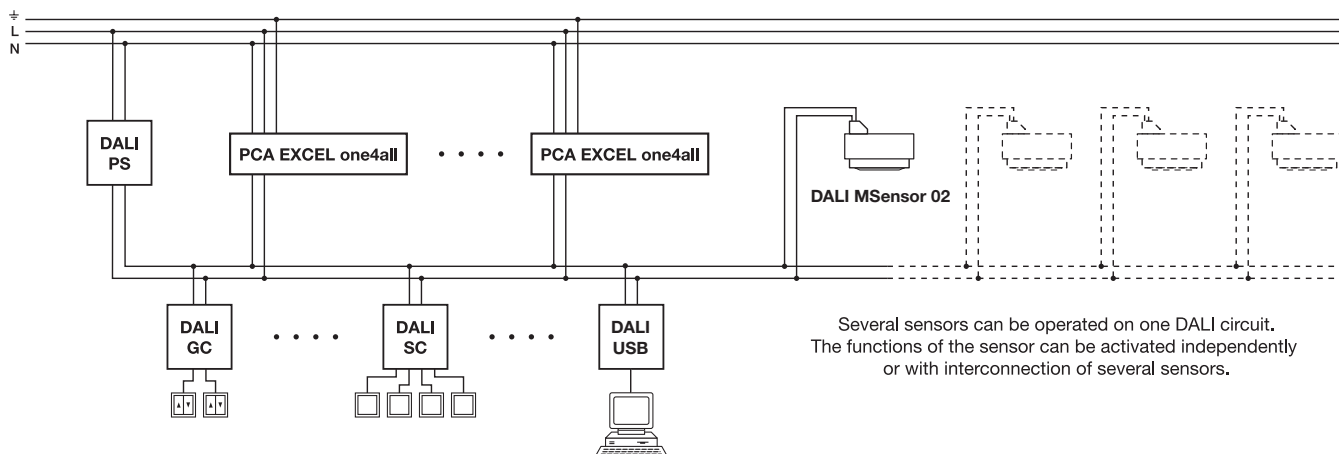
Ordering data

Type	Article number	Packaging, carton	Packaging, carton
DSI-RK	86449304	1 piece	10 piece

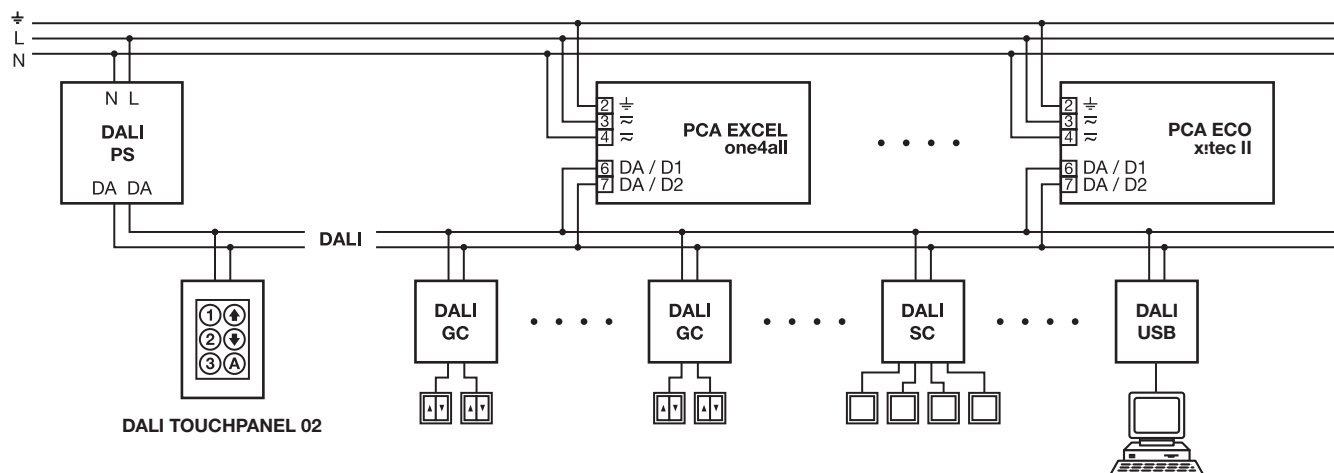
Specific technical data

Type	Input	Output, relay		
		Relay, floating	Switching output (at 110 V DC max.)	Switching output (at 250 V AC max.)
DSI-RK	DSI/switchDIM	Make contact	110 W / 1 A	500 W / 2 A

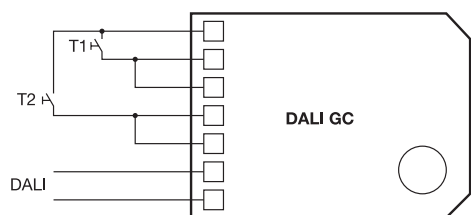
DALI MSensor 02



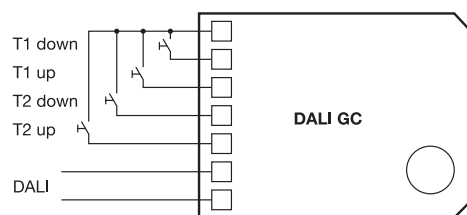
DALI modules in a network



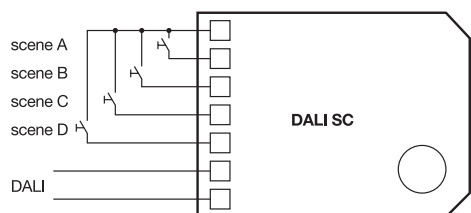
DALI GC, single push to make switches



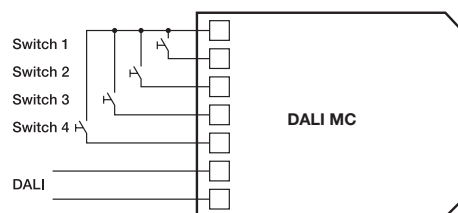
DALI GC, double push to make switches



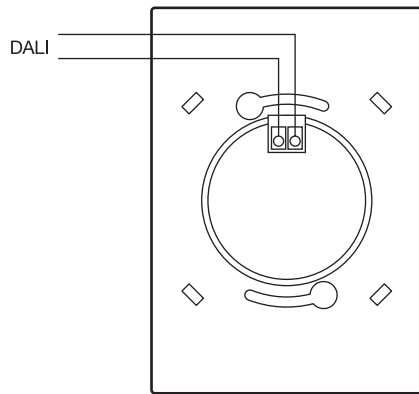
DALI SC



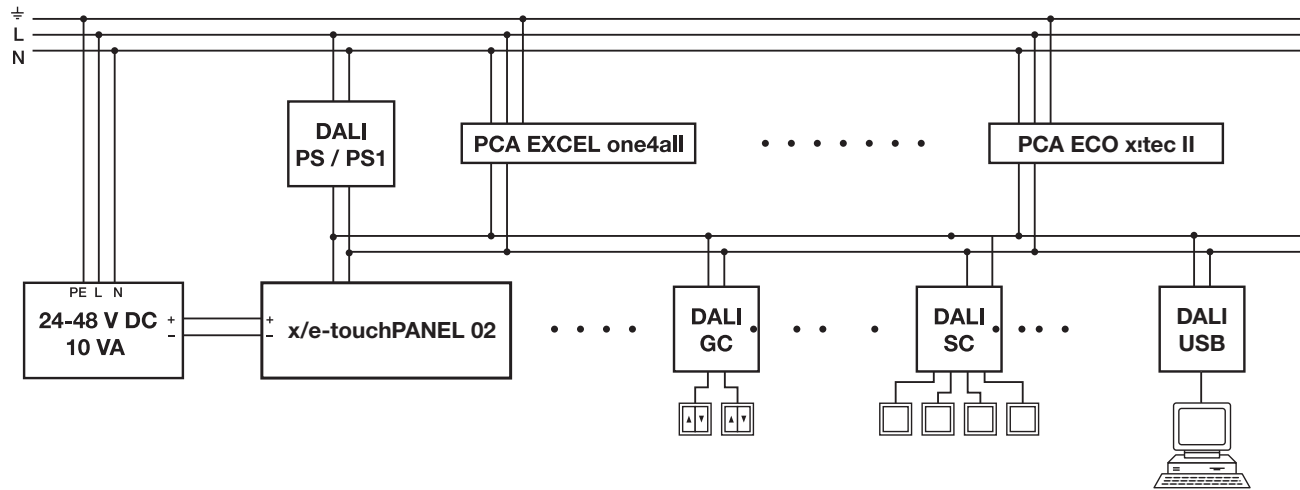
DALI MC



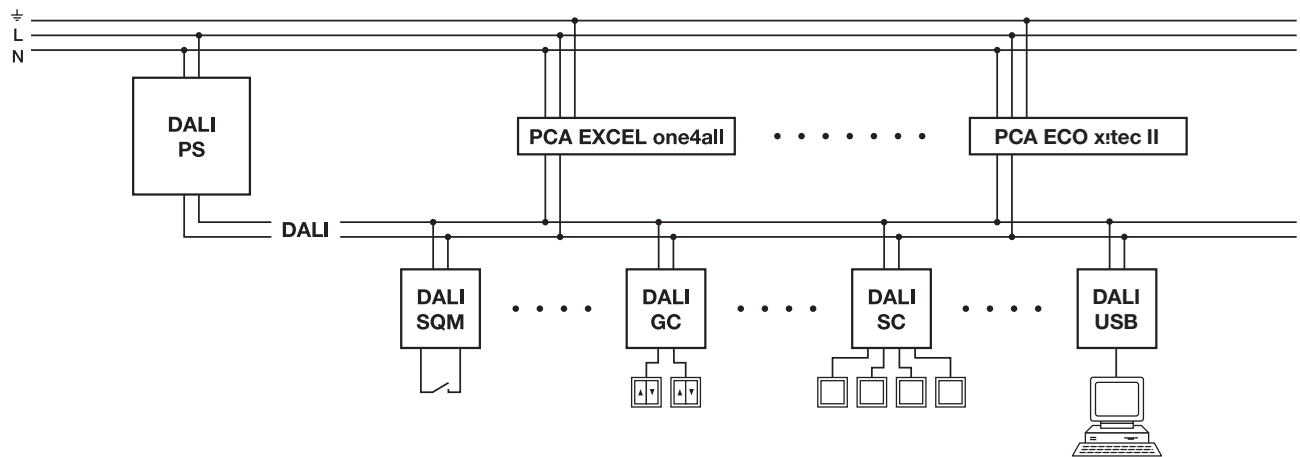
DALI TOUCHPANEL 02



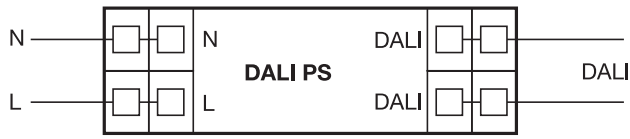
DALI x/e-touchPANEL 02



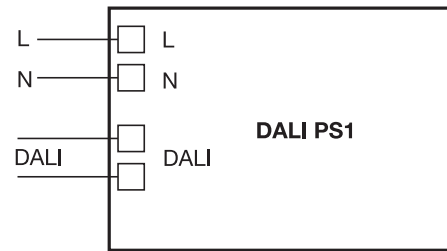
DALI SQM



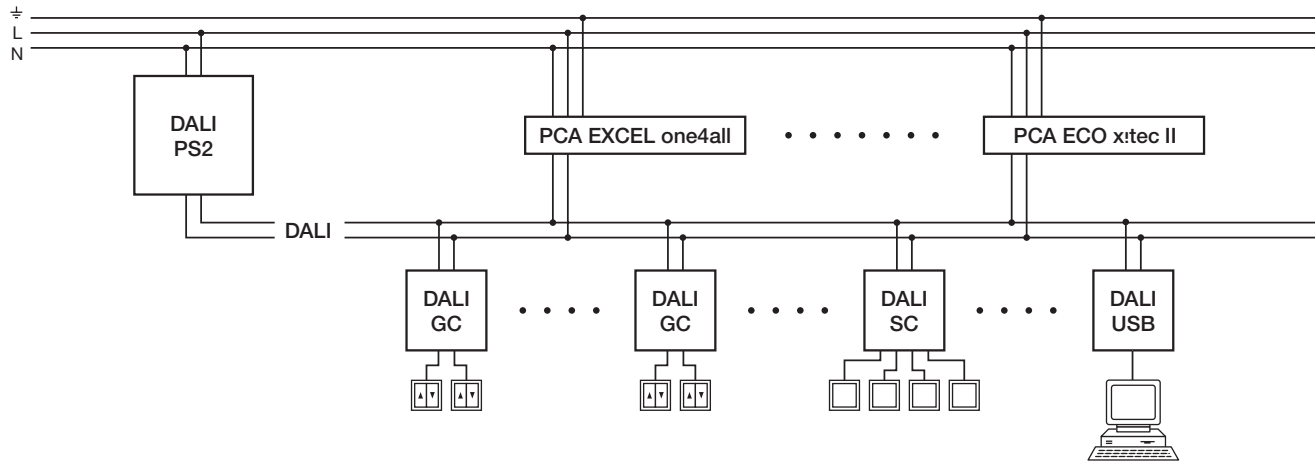
DALI PS



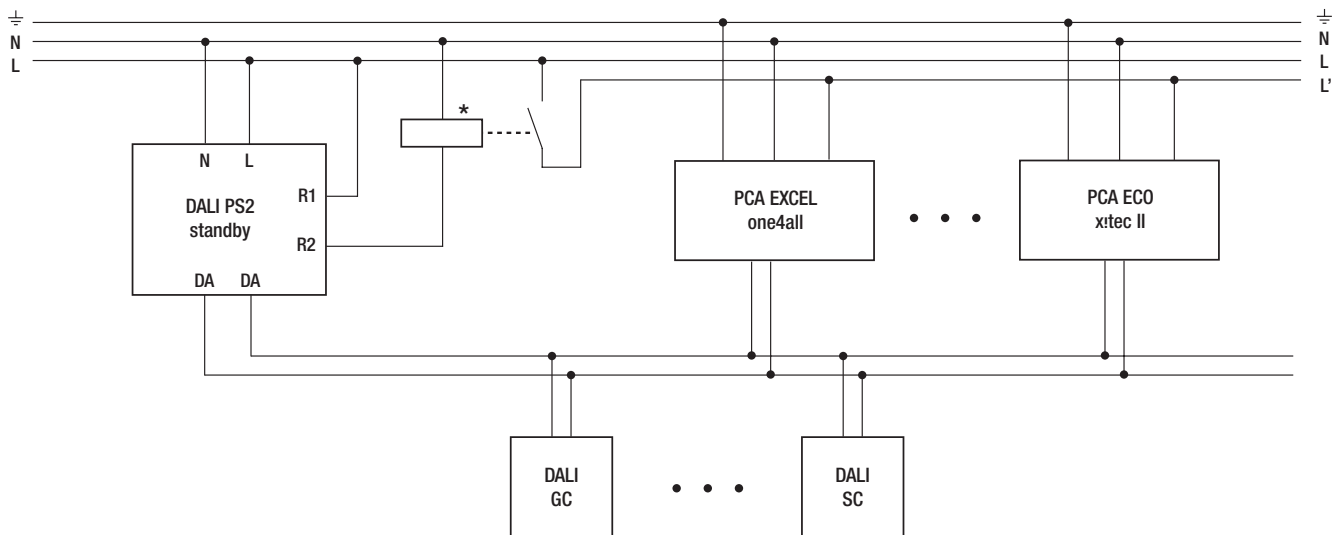
DALI PS1



DALI PS2

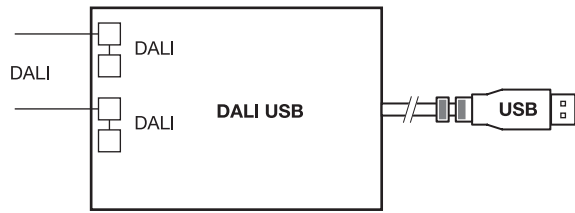


DALI PS2 standby

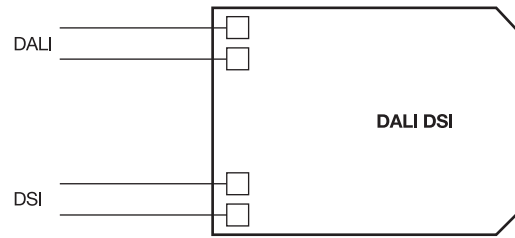


* DALI control modules that have their own power supply must not be connected to the switched phase L'
** The inrush currents of the ECG must be taken into account when dimensioning the contactor

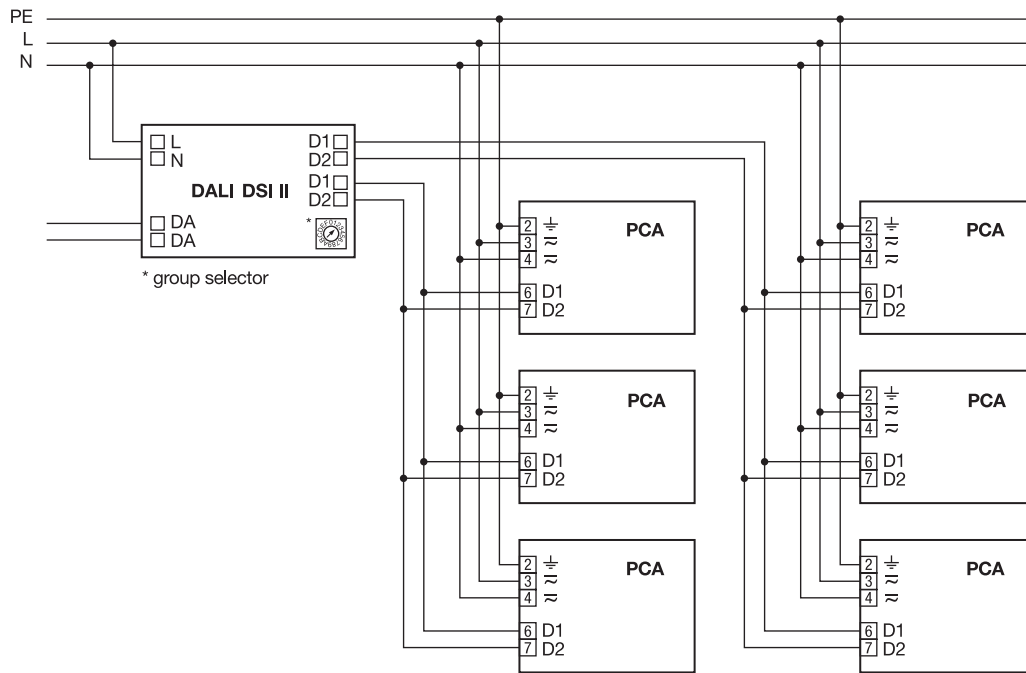
DALI USB



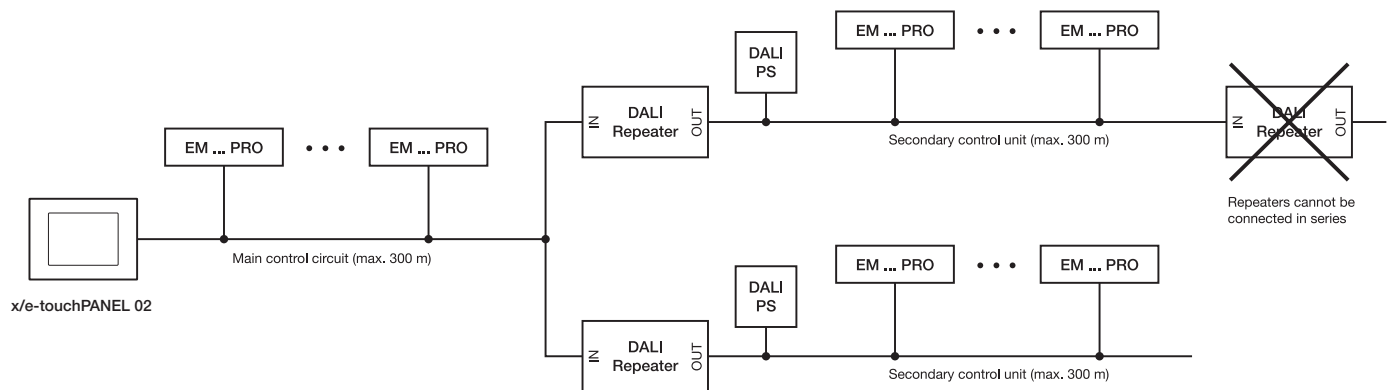
DALI DSI



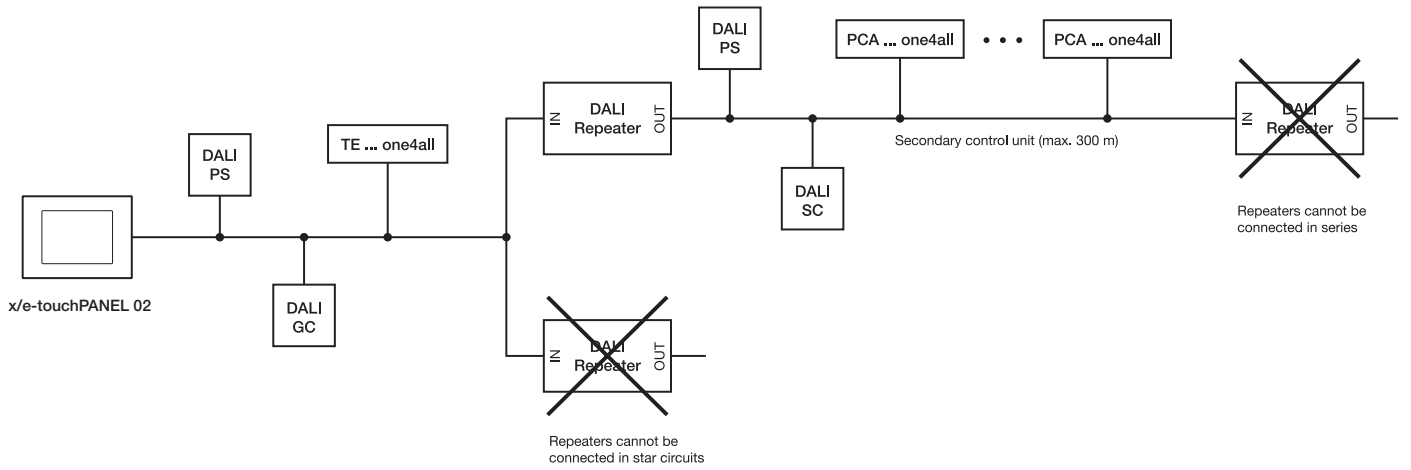
DALI DSI II



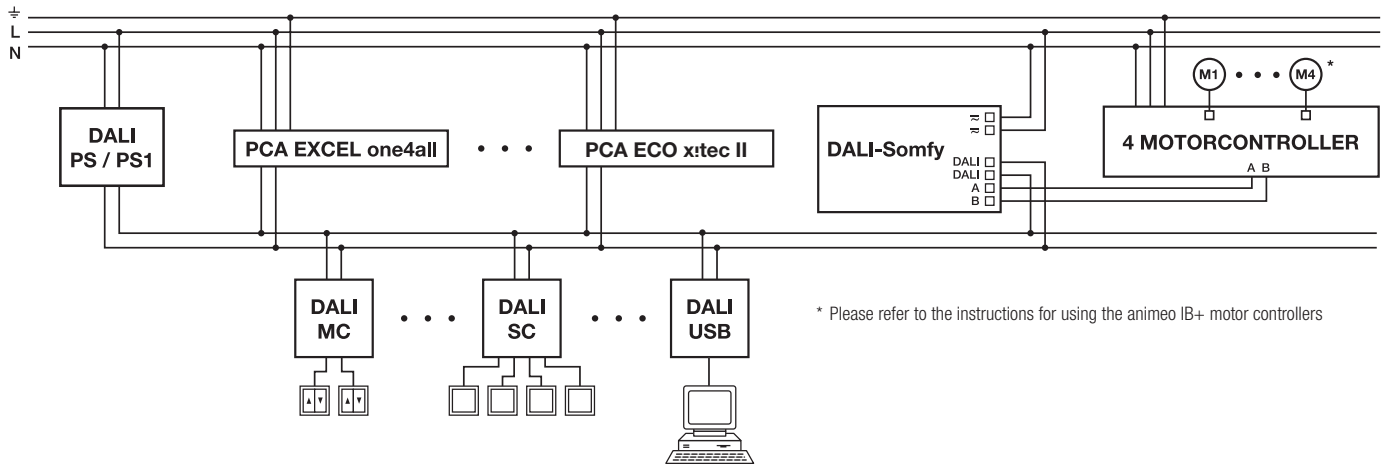
DALI Repeater – with one controller



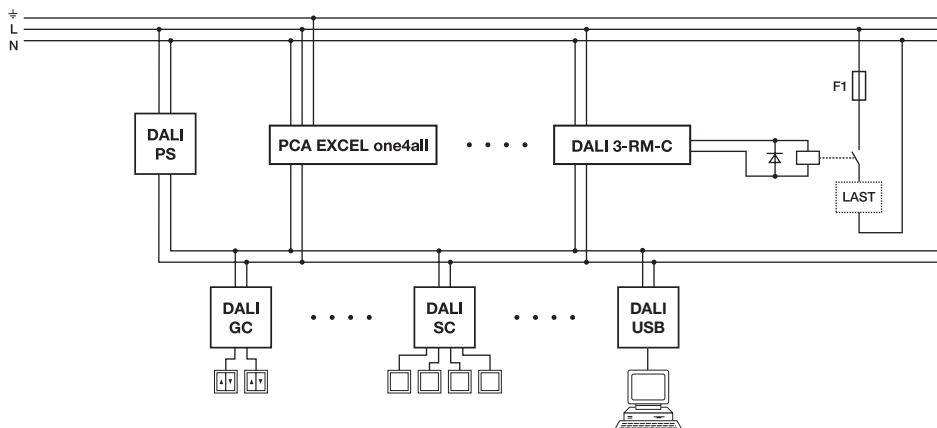
DALI Repeater – with multiple controllers



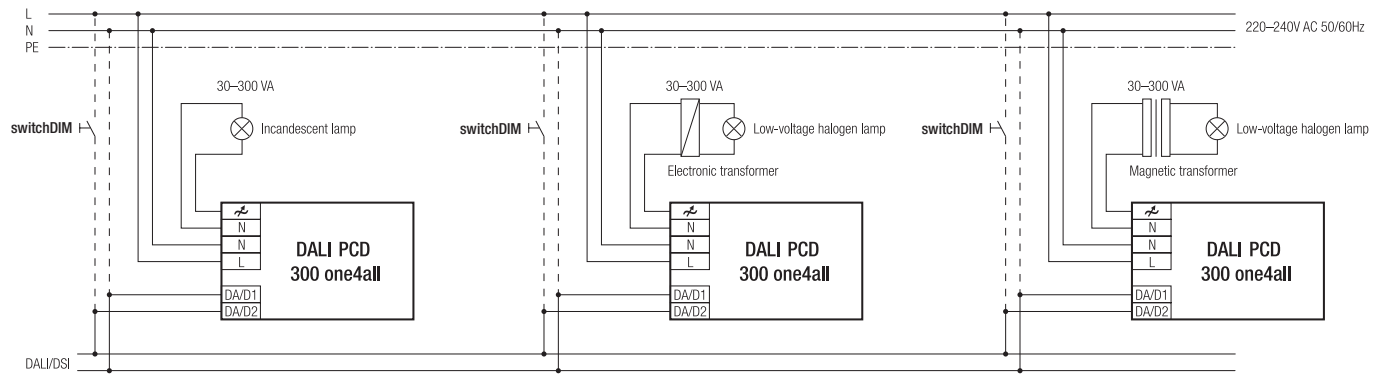
DALI Somfy animeo interface



DALI 3-RM-C

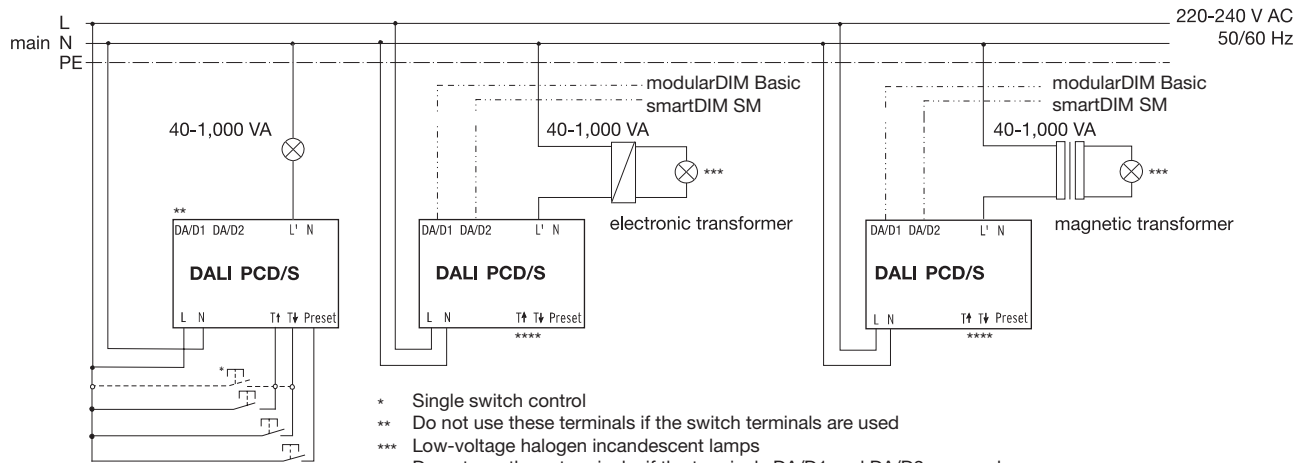


DALI PCD 300 one4all

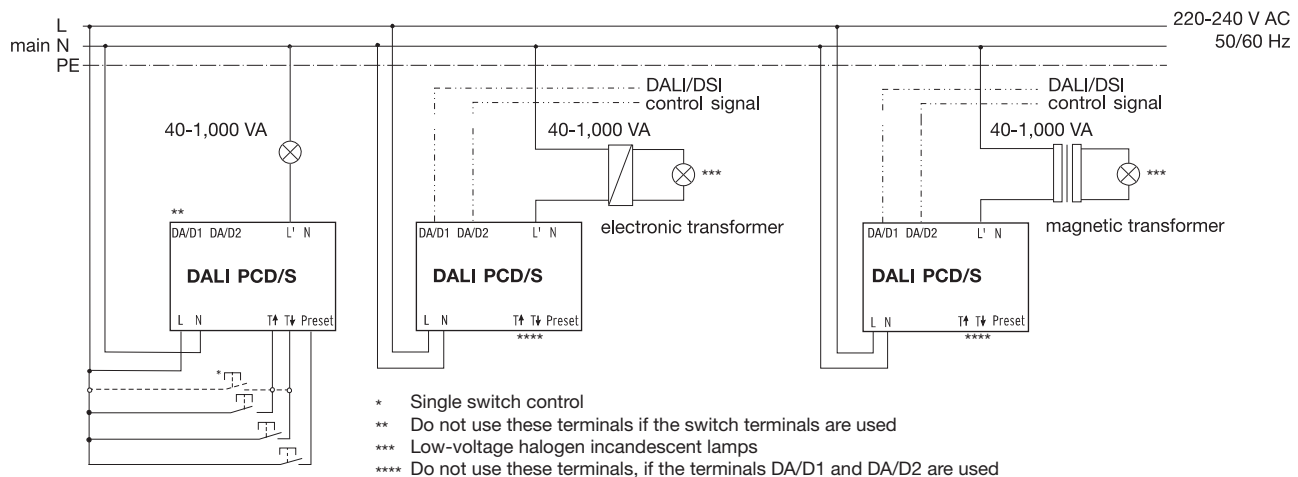


Mixed loads (capacitive, inductive and resistive) can be used.

DALI PCD/S – circuit 1

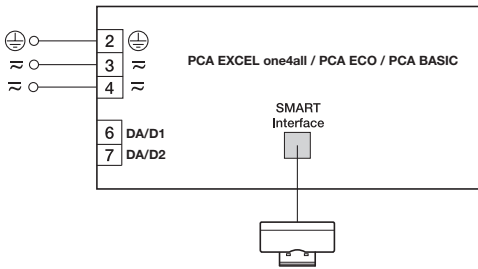


DALI-PCD/S – circuit 2

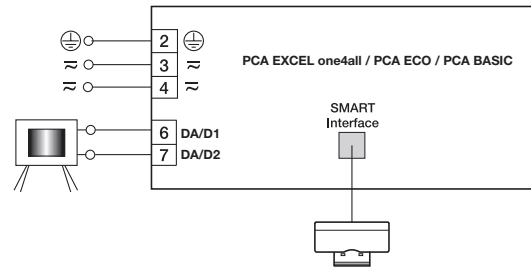


SMART Sensor 5D 19f

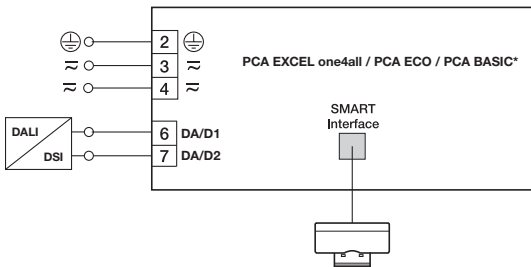
ON/OFF switch directly via mains voltage



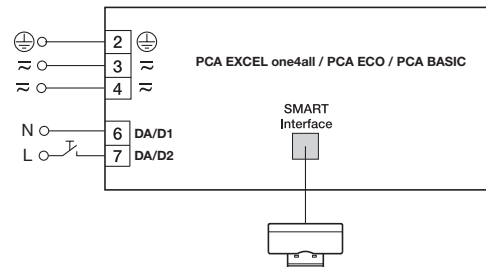
corridorFUNCTION with external motion sensor



DSI/DALI

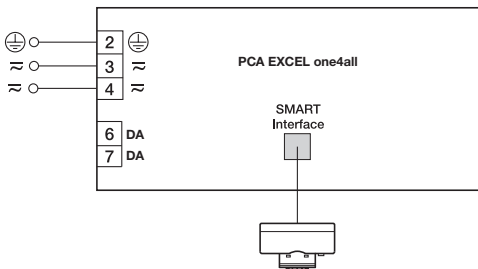


switchDIM

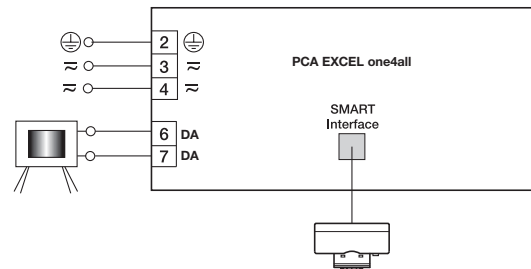


SMART Sensor 5DP 19f

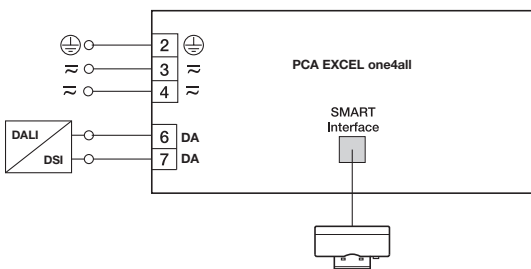
corridorFUNCTION with integrated motion sensor



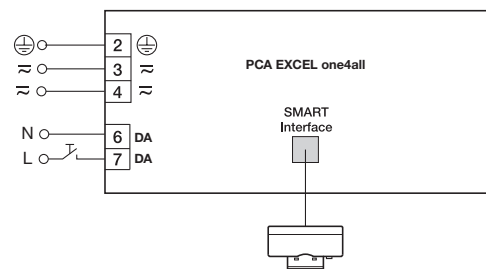
corridorFUNCTION with external motion sensor



DSI/DALI

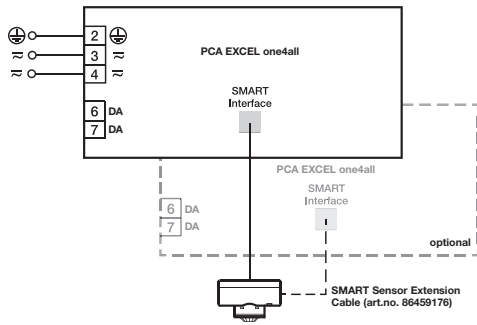


switchDIM

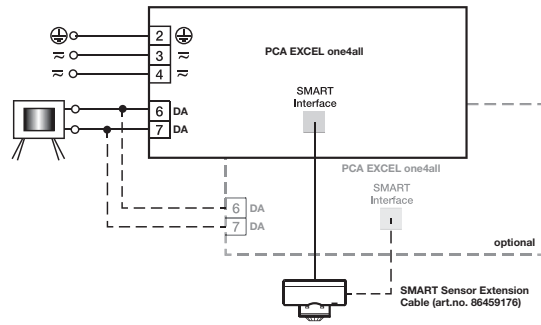


SMART Sensor 5DPI 19f / SMART Sensor 10DPI 19f

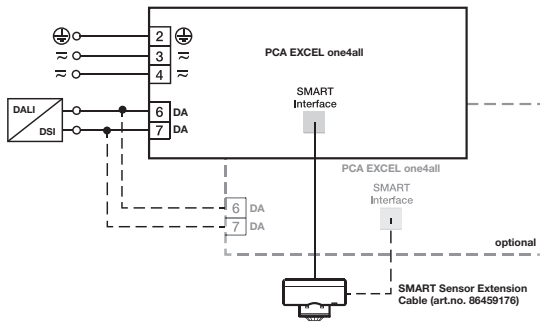
corridorFUNCTION with integrated motion sensor



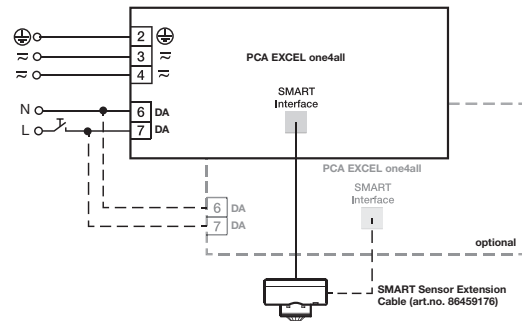
corridorFUNCTION with external motion sensor



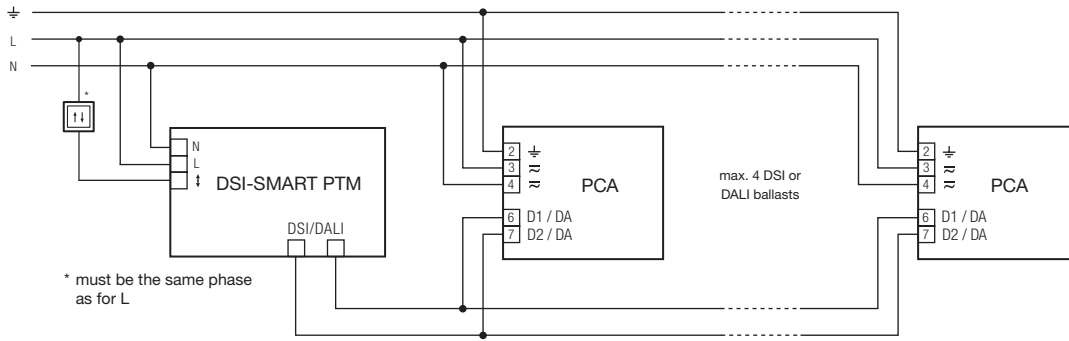
DSI/DALI



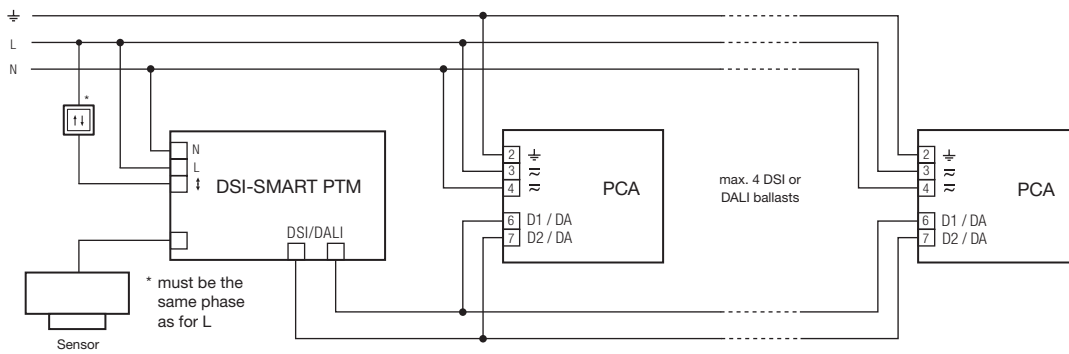
switchDIM



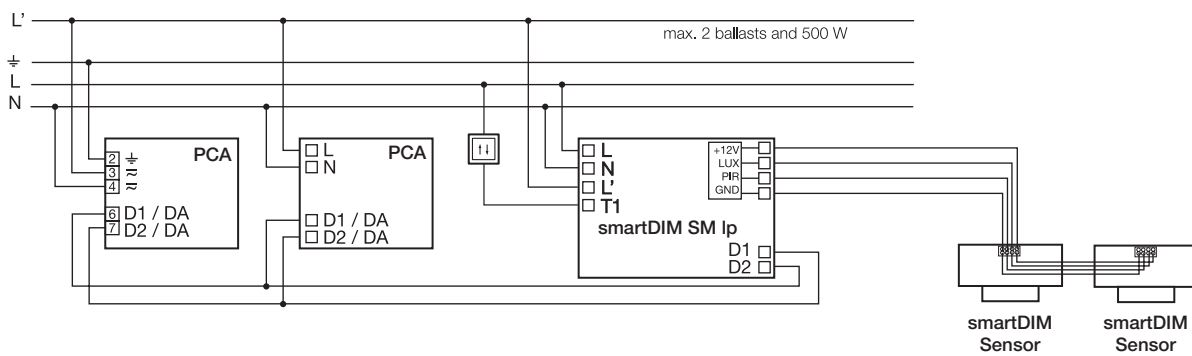
DSI SMART PTM – luminaire installation / surface mounting



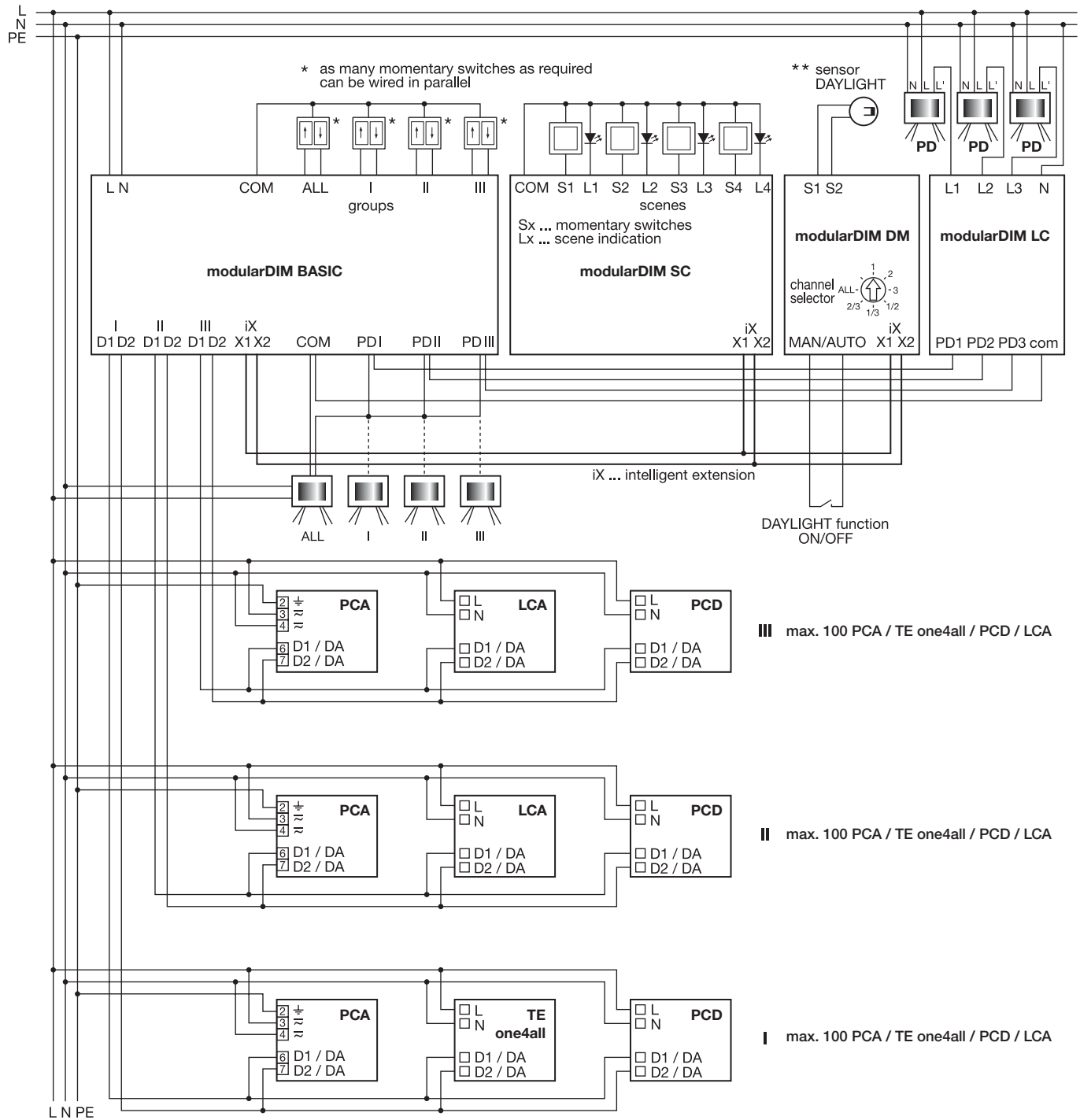
DSI SMART PTM – ceiling installation



smartDIM SM Ip



modularDIM

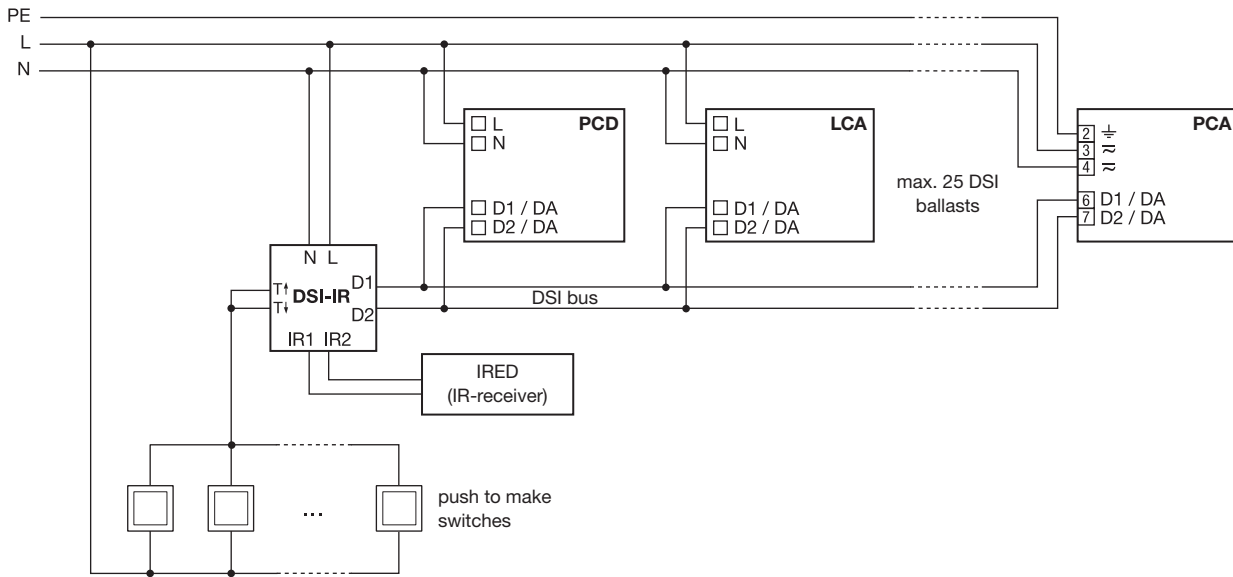


** the light sensor "sensor DAYLIGHT" is to be installed with free view direction window (consider mounting instruction)

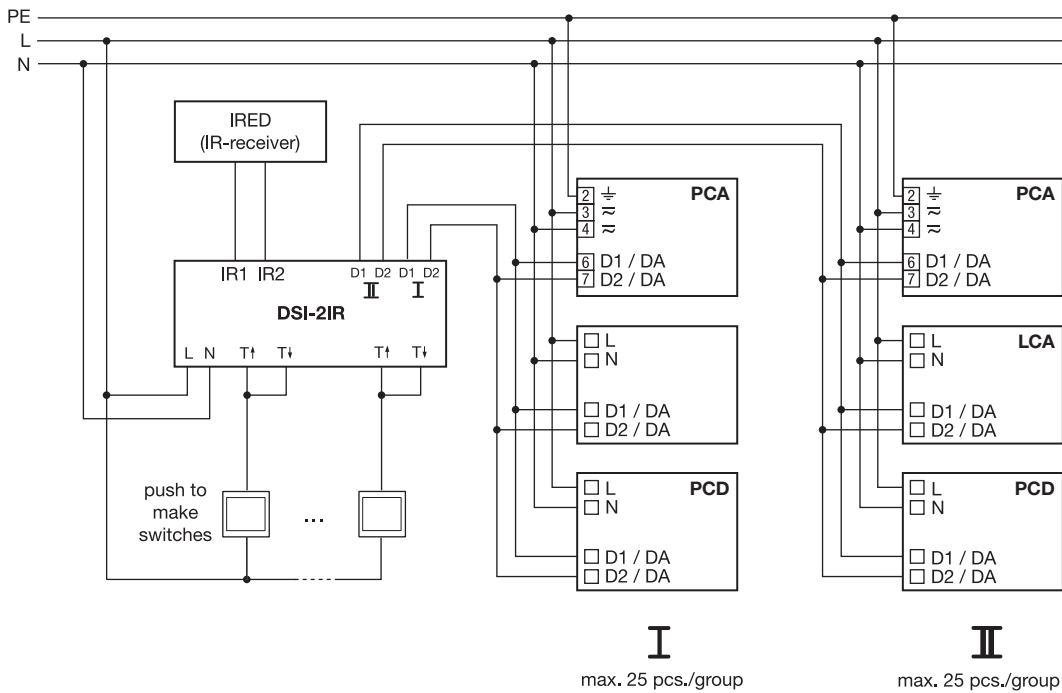
maximum wire lengths:

- DS: max. 250 m
- momentary switch: max. 100 m
- scene indication: max. 100 m
- iX: max. 10 m
- sensor DAYLIGHT: max. 100 m
- DAYLIGHT function ON/OFF: max. 100 m

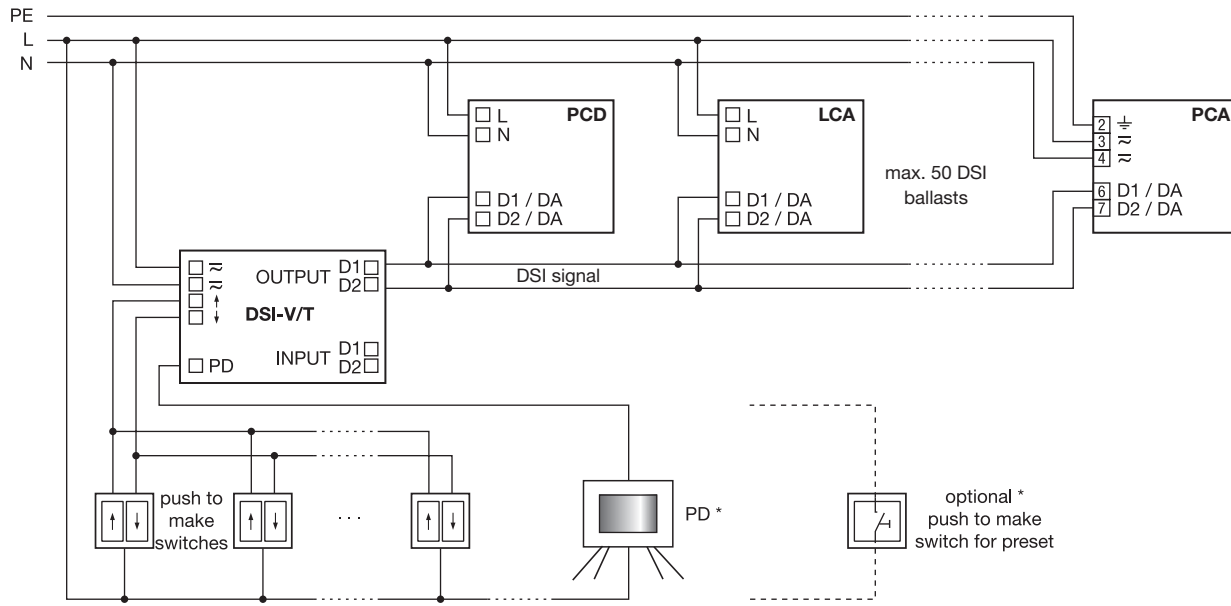
DSI-IR



DSI-2IR

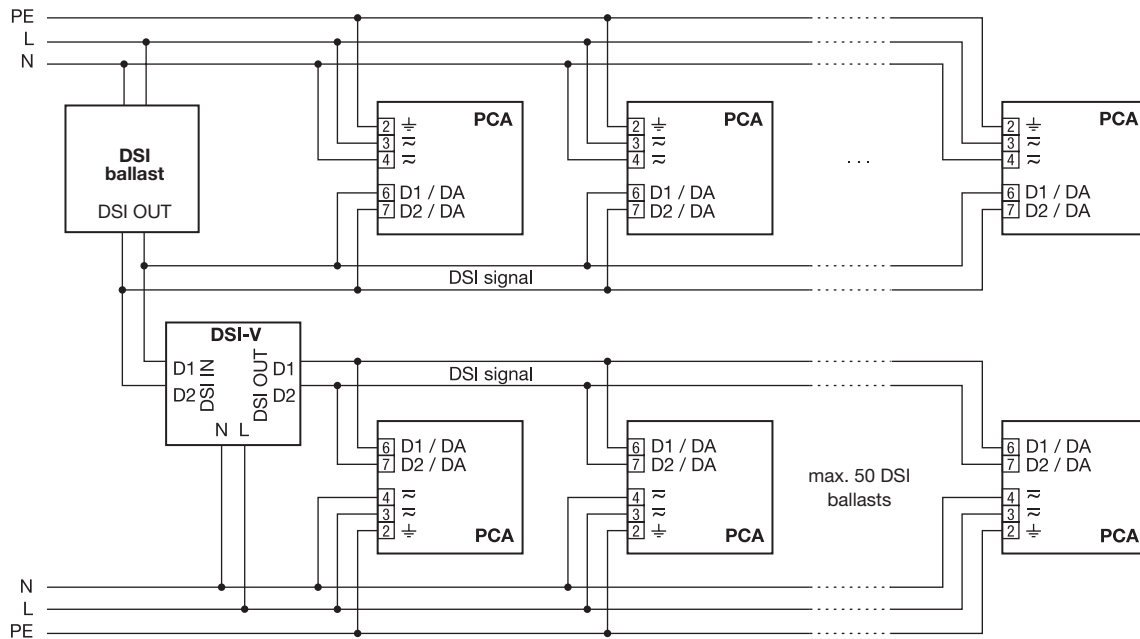


DSI-V/T – DSI-T function



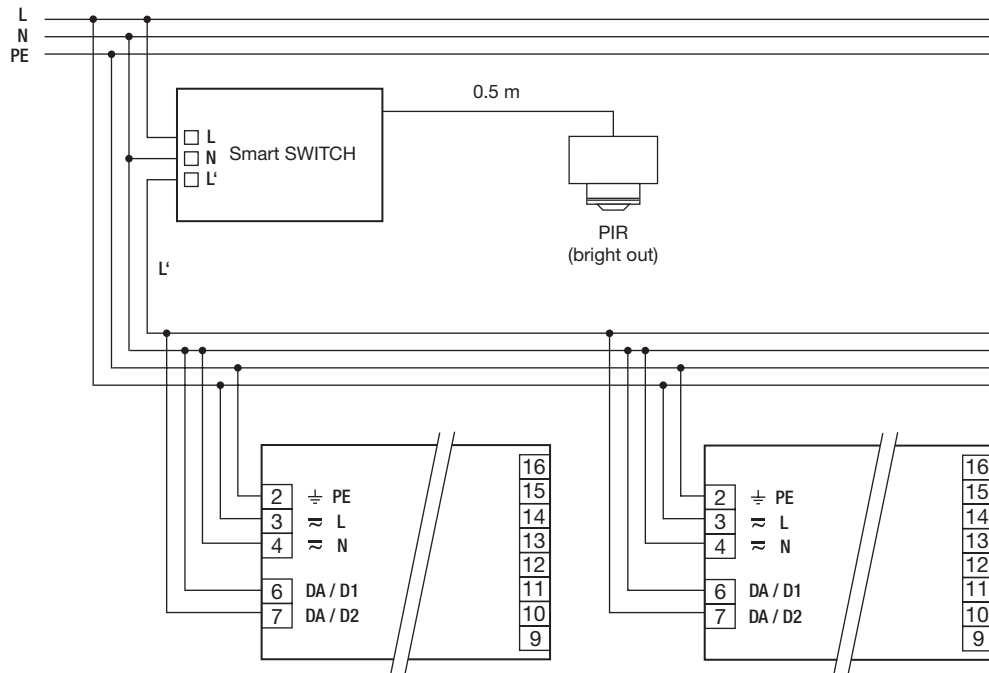
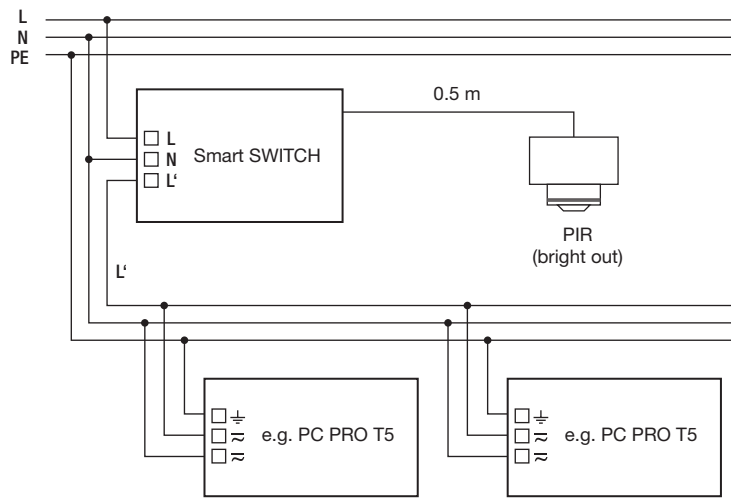
* Either control via PD or scene control with push to make switches.

DSI-V/T – DSI-V function

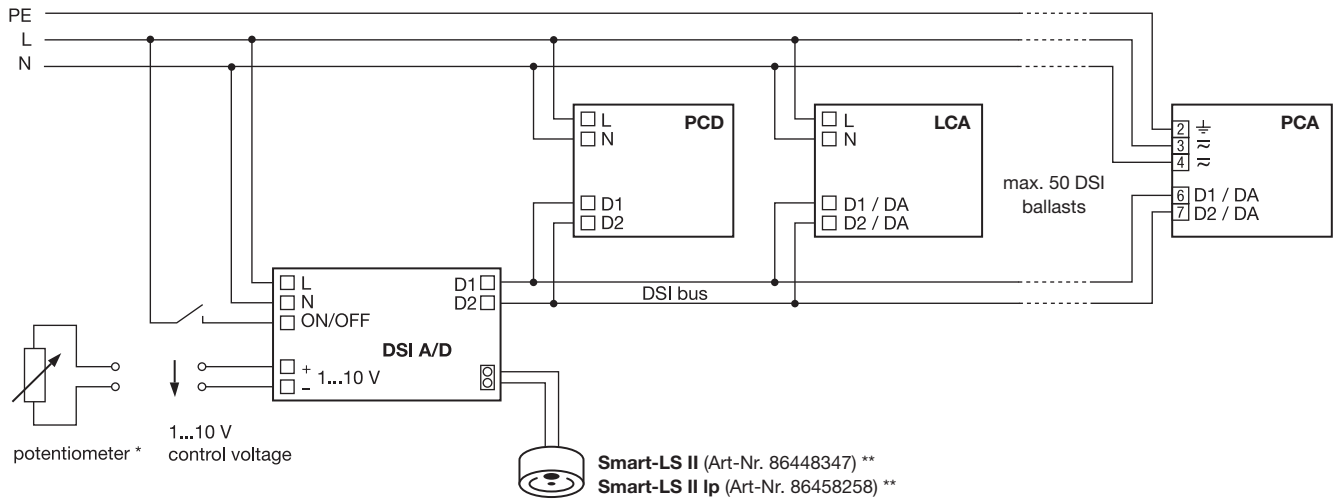


Cable length: Cable lengths of up to 500 m can be achieved by concatenating individual DSI-V/Ts. This maximum cable length can only be guaranteed in DSI-V mode if the DSI-V/T is operated as the only load, otherwise the maximum cable length is 250 m for a 1.5 mm².

Smart SWITCH II

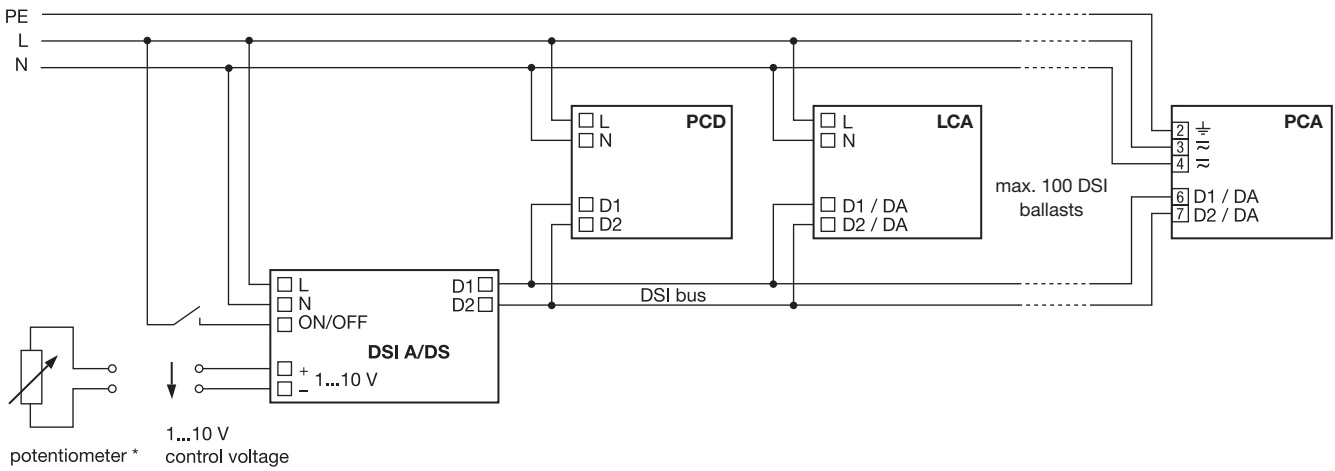


DSI-A/D



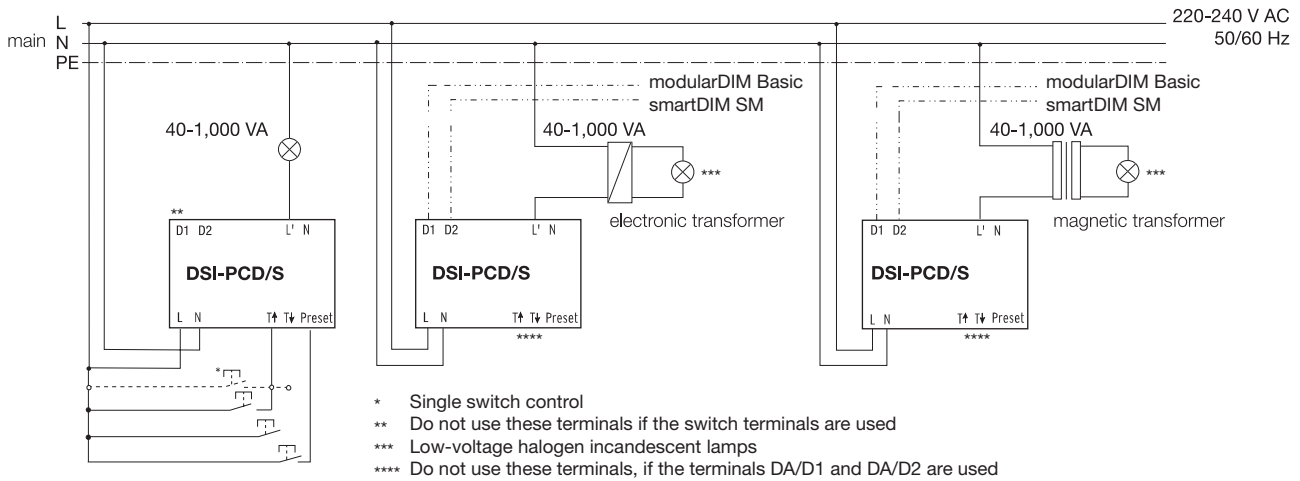
* If potentiometer with linear characteristic optimum 47 kΩ (47-100 kΩ possible), load ≥ 0.5 W
** If a Smart-LS II sensor is connected, the 1...10 V function is disabled

DSI-A/DS

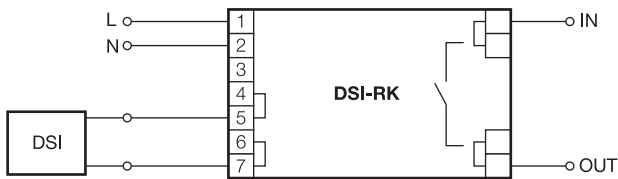


* If potentiometer with linear characteristic optimum 47 kΩ (47-100 kΩ possible), load ≥ 0.5 W

DSI-PCD/S



DSI-RK (DSI)



DSI-RK (switchDIM)

