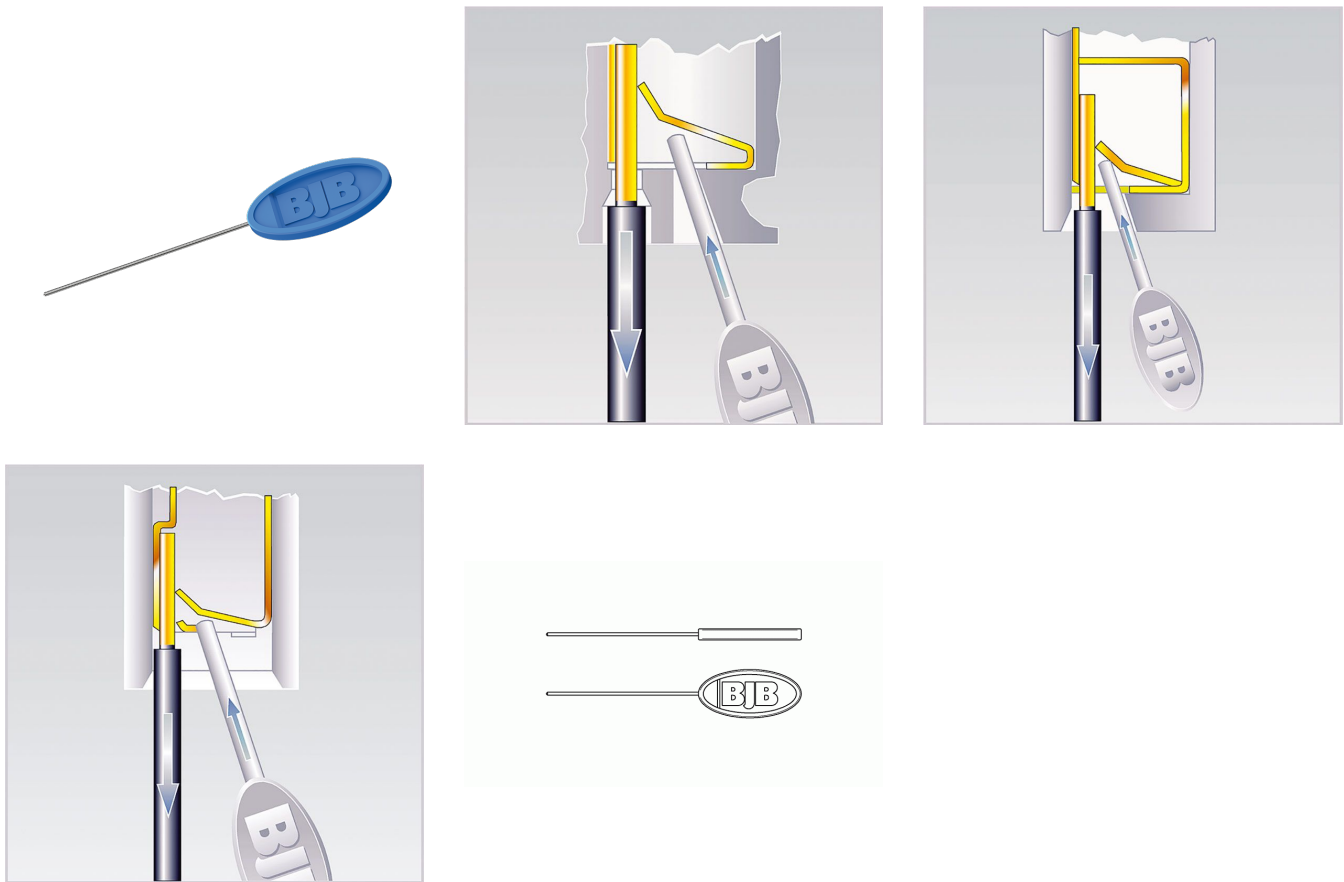


Release probe - Tool for releasing wires

Article number: 84.095.3301.98

EAN: 4049853



Product information "Release probe - Tool for releasing wires"

Methods of releasing wires

Pushwire contacts with a key or oval hole in the housing: The release probe, which we can gladly provide upon request, is placed behind the conducting wire, thereby opening the leaf spring. The wire can be pulled out. (when pressing the leaf spring down, extreme care must be taken in order that the contact does not become distorted)*.

Simplest way:

Pull out the release probe and the wire at the same time.

Pushwire contacts with a round hole or release slot in the housing: A release probe or screwdriver is inserted into the release slot and a slight pressure applied to the leaf spring (when pressing the leaf spring down, extreme care must be taken in order that the contact does not become distorted)*. The wire is easily removed.

* Under light fitting production conditions, we recommend not to use unassembled products again.

Version: Release probe

Note warranty conditions: *Warranty conditions of BJB GmbH & Co. KG as stated as available via the Internet under <https://www.bjb.com/en/legal-information/general-terms-and-conditions/> are valid.

Packaging quantity: 1

Producttype: Accessories terminal blocks

Series: Pushwire terminals