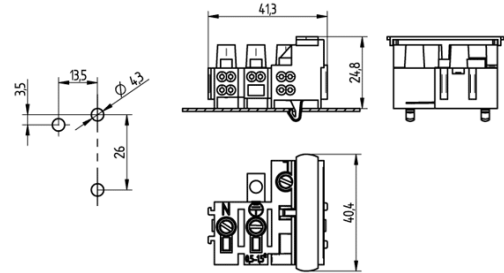
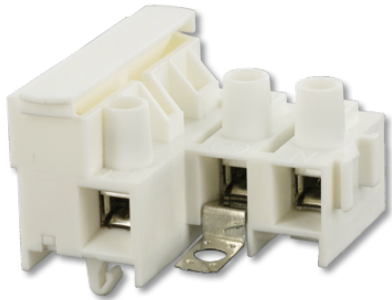


# Fused terminal block 3 poles 49.132.3002.51



T 85



ø 2,7



0,8 - 1,0

10 A  
400 V

# Fused terminal block 3 poles

## 49.132.3002.51

---



### DESCRIPTION

With earth bracket  
Pushwire terminals: 0.5 - 1.5 mm<sup>2</sup>  
Screw terminals will also accept wires with ferrule  
Fuse not supplied.  
Push wire terminal block - earth terminal 2-wire income only

Product name:	Fused terminal block 3 poles
Short description:	Fuse 6 x 25 mm
Mounting method 1:	Push in fixing
Material:	Housing: PBT
Marking:	N ? L
Screw terminals:	ø 3.4
Material thickness:	0.8 - 1.0
Quantity of poles:	3
Color:	white
Weight:	18
Pkg.:	500