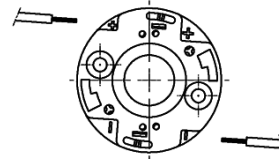
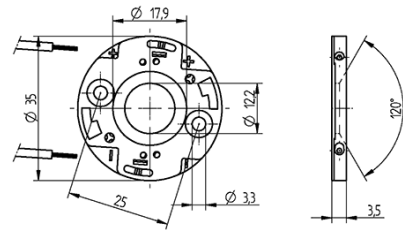


COB connector Ø 35 mm for LED array 13.5 x 13.5 mm 47.360.1020.50



8.0 + 1 mm

0,35-0,5 mm²

0,35-0,5 mm²

COB connector Ø 35 mm for LED array 13.5 x 13.5 mm 47.360.1020.50



DESCRIPTION

With integrated COB holder and interface for reflectors 47.935 and 35.835

Easy pre-assembly of LED

Screw mounting: for screws M3 and locking washer

Max. torque for screw fixing 0.5 Nm*

Strip length: 8+1 mm

Polarity symbols of connector and LED must be observed in assembly

Specification of LED manufacturer must be observed

In a series connection of LED modules, the air gap and creepage distances has to be sized that each module covers the total voltage of the series connection

*Please note the max torque of the COB manufacturer

Packaging quantity:	945
Packaging type:	Bag
Product name:	COB connector Ø 35 mm for LED array 13.5 x 13.5 mm
Country of origin:	DE
Mounting method 1:	Screw mount
Mounting method 2:	P2F fixing with 28.902.-102
Mounting method 3:	Tip for fastening by screws: The screw chamber of the 47.360 series has a height of 1.9 mm. The screw head must not be higher, otherwise the reflector will fit poorly or not at all.
Prefixation of COB:	Yes
Material:	Housing: PBT Contacts: CuSn
LED manufacturer:	Seoul Semiconductor, Philips, Cree, Xicato, LG Innotek, Vossloh-Schwabe, Samsung, OSRAM Opto Semiconductors, Luminus, Liteon, Lextar, Itswell, Edison, Citizen, Everlight
LED Typ:	6W L-COB G2, Opto 9W, DMC 122, ZC6, LC003D / 6D / 9D / 13D, S9, M082, PB04H07, PB10H08, Xuan1313, CIM-9 / CXM-9 / CLM-9, CMU 1013, COB-B series, SAWS0661A, CHM-6, Durin S8 GWP9LT31 / GW7LM32, LES 9.8 (13.5 x 13.5 x 0.9 mm), CLU02X / 7AX / 7BX / 70X, CMU 1003, CMU 1006, CMU 1010, Fortimo SLM C 1203 L09 1313 G7N
Conductor cross-section:	0.35-0.5 mm ²
Rating:	Rating: 3A / 150 VDC
Weight:	2.8
Pkg.:	945

Suitable for the following LED models:

LED Manufacturer	LED Type	More Information
Citizen	CLU02X / 7AX / 7BX / 70X	http://ce.citizen.co.jp
Edison	Opto 9W	http://www.edison-opto.com.tw
Everlight	Xuan1313	http://www.everlight.com
Itswell	COB-B series	http://www.itswell.com
Lextar	PB10H08	http://www.lextar.com
Lextar	PB04H07	http://www.lextar.com
Liteon	M082	http://optoelectronics.liteon.com
Luminus	CIM-9 / CXM-9 / CLM-9	http://www.luminus.com

COB connector Ø 35 mm for LED array 13.5 x 13.5 mm 47.360.1020.50



OSRAM Opto Semiconductors	Durin S8 GWP9LT31 / GW7LM32	http://www.luminus.com
OSRAM Opto Semiconductors	S9	http://www.osram-os.com
Samsung	LC003D / 6D / 9D / 13D	http://www.samsung.com
Seoul Semiconductor	ZC6	http://www.seoulsemicon.com
Vossloh-Schwabe	DMC 122	http://www.vossloh-schwabe.com
Seoul Semiconductor	SAWS0661A	http://www.seoulsemicon.com
Luminus	CHM-6	http://www.luminus.com
LG Innotek	6W L-COB G2	http://ledlighting.lginnotek.com
Xicato	LES 9.8 (13.5 x 13.5 x 0.9 mm)	https://www.xicato.com/
Cree	CMU 1003	http://www.cree.com
Cree	CMU 1006	http://www.cree.com
Cree	CMU 1010	http://www.cree.com
Cree	CMU 1013	http://www.cree.com
Philips	Fortimo SLM C 1203 L09 1313 G7N	http://www.lighting.philips.co.uk/oem-emea