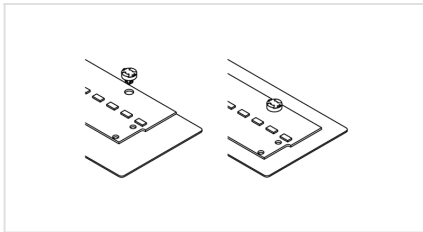
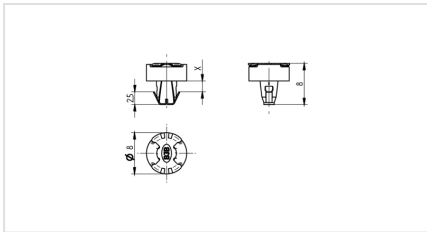
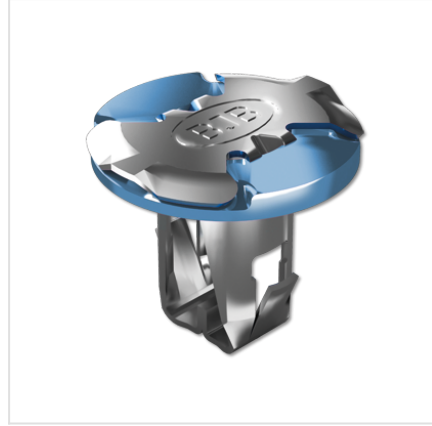
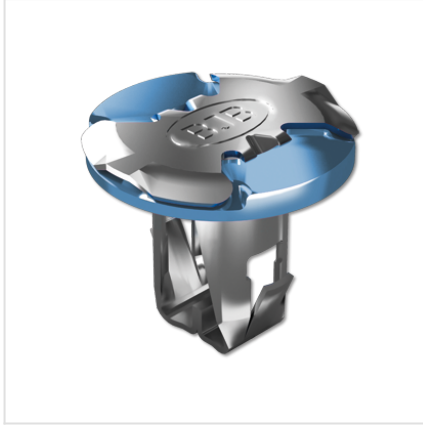
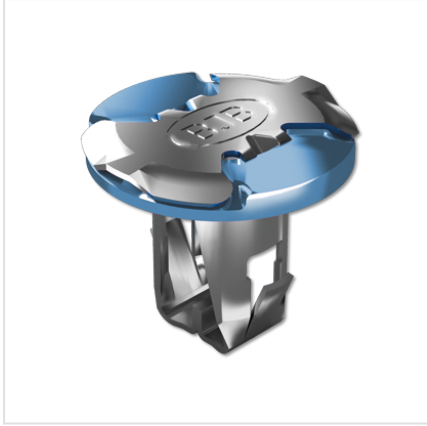




28.901.U166.10

Components for LED Boards
P2F (Push-to-Fix) - Fixing elements for PCBs



Color:

blau

Part no.:

28.901.U166.10



Description

- Push-in fixing: for hole pattern in light fitting $\varnothing 4.2 \pm 0.1$ mm and $\varnothing 4.7 \pm 0.1$ mm in PCBs
- CrNi and silicone materials ensure long life reliability
- Suitable for Zhaga certified LED modules. BJB recommends to use modules with 4.7 mm fixing hole diameter.
- Eliminates potential damage from screw fixing due to low insertion force
- Assembly without any additional tools possible
- Solutions for Automation upon request
- Removable from front

Product name:	P2F - Push to Fix - Fixing element for PCBs
Total thickness (X):	3.2 - 3.6 mm
Key feature 1:	Reliable heat dissipation due to a constant pressure.
Key feature 2:	Quick assembly process improves production efficiency and reduces production costs
Farbe:	blau
Mounting method 1:	Push-in fixing for mounting PCBs
Material:	CrNi with silicon insulating ring
Weight:	2
Pkg.:	5000