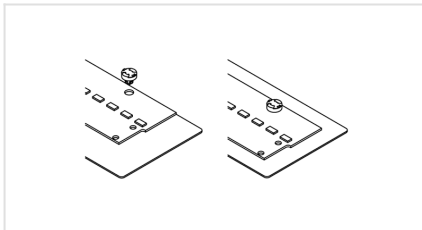
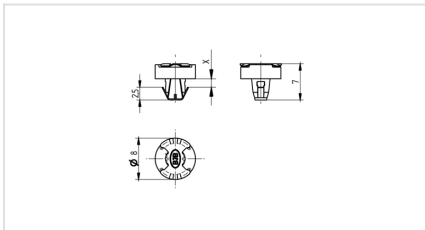
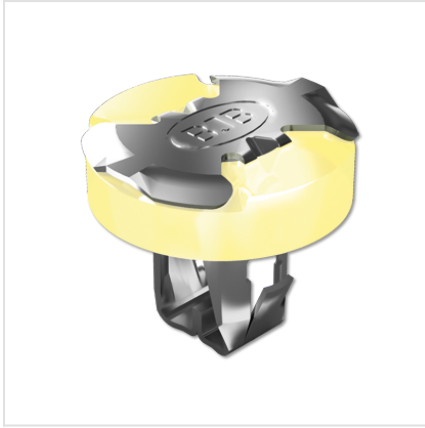




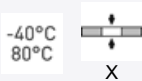
28.901.U163

Push2Fix (P2F) - Fixing Elements

P2F (Push-to-Fix) - Fixing elements for PCBs



Color: transparent gelb
Part no.: 28.901.U163.10



Description

- Push-in fixing: for hole pattern in light fitting $\varnothing 4.2 \pm 0.1$ mm and $\varnothing 4.3-4.8$ mm in PCBs
- CrNi and silicone materials ensure long life reliability
- Suitable for Zhaga certified LED modules
- BJB recommends to use modules with $\varnothing 4.3-4.8$ mm fixing hole diameter
- Due to manufacturing tolerances and tolerances required for thermal expansion, we recommend choosing the largest possible hole diameter
- Eliminates potential damage from screw fixing due to low insertion force
- Assembly without any additional tools possible
- Solutions for Automation upon request
- Removable from front

Product name: P2F - Push to Fix - Fixing element for PCBs

Total thickness (X): 2.0 - 2.4 mm

Key feature 1: Reliable heat dissipation due to a constant pressure.

Key feature 2: Quick assembly process improves production efficiency and reduces production costs

Color: white

Mounting method 1: Push-in fixing for mounting PCBs

Weight: 2

Pkg.: 5000