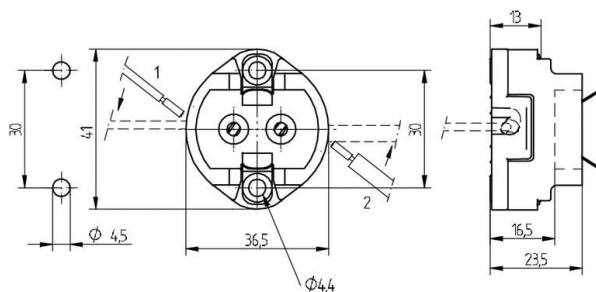


 Create pdf

Lampholders for discharge lamps

25.701.1000

G12



pkg.	wt.	part no.
216	38 g	25.701.1000.00



Connection: without cable, single pushwire terminals

For Metal Halide lamps

Screw fixing

Housing: Ceramic / PPS

- Maximum permissible diameter of the insulation 4.2 mm
- Please consult us if fixing at rear with M3 rivet.
- Suitable for light fittings of protection class II in accordance with EN 60598-1 2008.

T250		 max. \varnothing 1.8 mm	4 A 250 V	 4 kV/pulse
------	---	--	--------------	---

Document generated on: Th, 9. February 2017 - 17:10